



DISCOVER **MORE.**

DISCOVER A PLACE WHERE INNOVATIVE
THINKING, CHARMING NEIGHBORHOODS AND
EXCEPTIONAL ACCESS GIVE YOU **MORE**.



DISCOVER 500 EAST **MOREHEAD**.



DISCOVER MORE.

When you're driven to succeed, the old rules don't apply. You make it your mission to shatter expectations. You set your sights on perfection and aim higher still. And when you reach further, you achieve more than you ever thought possible.

With more access, more amenities and more opportunities, 500 East Morehead empowers businesses and employees to achieve more. Situated among gorgeous tree-lined streets, this seven-story, 180,000-square-foot premier office/retail building combines the creativity of **South End**, the history of **Dilworth** and the modern atmosphere of **Midtown** in one dynamic location.

EXPERIENCE MORE.

Whether you're starting a company from the ground up or working toward the corner office, work has never just been about a job. Business is personal. It has to be. So we created a place where corporate enterprise can thrive amid the welcoming atmosphere of a historic neighborhood.

While only three blocks from Uptown and one block from South End, 500 East Morehead feels like it's a world away from Charlotte's hectic urban core. Here, free parking is abundant, traffic flows easily and imposing skyscrapers are replaced by a gorgeous canopy of trees. Charlotte's iconic Dilworth neighborhood and a myriad of nearby apartment communities bring home closer than ever while shops, farmers' markets, restaurants and boutiques make it easy to run a quick errand or meet a friend for lunch. Tree-lined streets and Latta Park offer the perfect setting for a walk or bike ride.

In fact, all the conveniences you could want come together right here. 500 East Morehead is also:

- next door to the Dowd YMCA, which features indoor pools, free weights and equipment, fitness classes, steam rooms/saunas, racquetball and basketball courts
- two blocks from the Carson Blvd light rail station
- two blocks from the Charlotte Rail Trail
- five blocks from Little Sugar Creek Greenway

Closely connected to the heart of the city yet replete with neighborhood charms, 500 East Morehead has been carefully designed to ensure work feels less like a job and more like home.

Unobstructed views
of Uptown.



CONNECT MORE.

500 East Morehead offers convenient transportation options whether you're traveling a few blocks or a few continents. A short walk from the light rail, I-277 and I-77 and a quick 15-minute drive from the Charlotte Douglas International Airport, 500 East Morehead makes it easy to connect to everywhere you want to be.

EXPLORE MORE.

Close enough to walk or bike to work and minutes from Charlotte's best sports venues, museums, performance centers and restaurants, 500 East Morehead offers the best of the Queen City all in one place.

★ NEW MULTIFAMILY DEVELOPMENT

1. Quarters at Morehead
2. Catherine 36
3. Park & Kingston
4. Camden Gallery
5. 1100 South
6. Dilworth-Marsh
7. Strawn Site
8. Fountains Uptown
9. Solis Dilworth
10. Dillon
11. Crescent Dilworth

📍 ARTS & CULTURE

1. Mint Museum
2. Bechtler Museum of Modern Art
3. The Knight Theatre
4. Charlotte Convention Center
5. NASCAR Hall of Fame

🏠 SCHOOLS

1. Dilworth Elementary School

▲ PARKS & RECREATION

1. Dowd YMCA
2. Latta Park
3. Pearl Street Park
4. Little Sugar Creek Greenway

■ RESTAURANTS

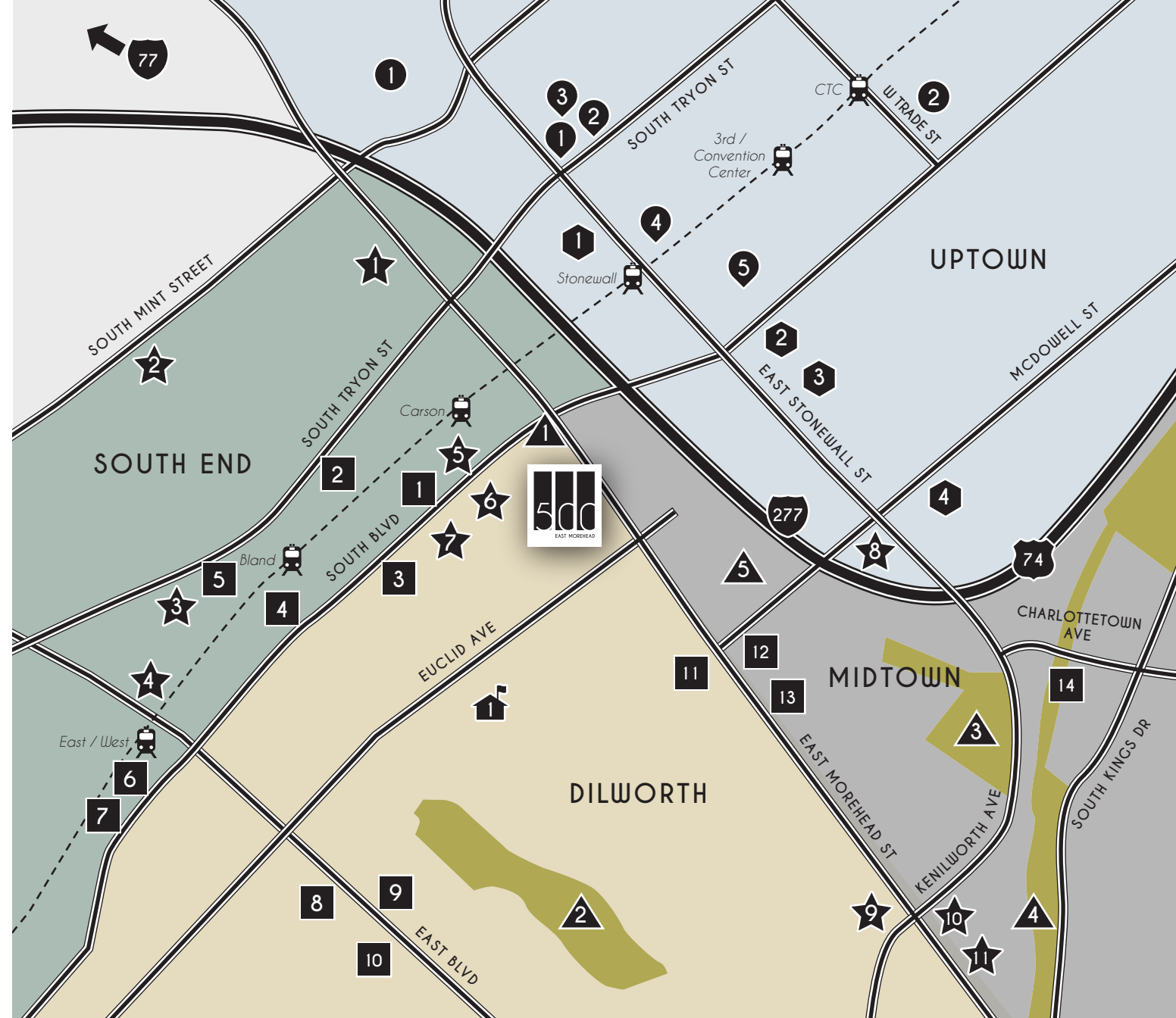
1. Nikko
2. Greek Isles Restaurant
3. Einstein Bros Bagels
4. Nan and Byron's
5. Phat Burrito
6. The Liberty
7. Tupelo Honey
8. 300 East
9. Copper
10. Thai Taste
11. Art's Barbecue & Deli
12. Meat & Fish Co.
13. Dilworth Grille
14. Metropolitan Restaurants (including Vivace, Dresslers and Zoe's Kitchen)

● SPORTS ARENAS

1. Bank of America Stadium
2. Time Warner Cable Arena

🏨 HOTELS

1. The Westin
2. Hilton Garden Inn
3. Hampton Inn Charlotte-Uptown
4. Le Méridien Charlotte



ACHIEVE MORE.

With a progressive style that easily blends with the historical roots of its surroundings, 500 East Morehead offers a unique space designed to invigorate businesses and the people who power them. Here, a myriad of amenities—from upscale conferencing facilities and gorgeous private terraces to free, convenient parking—empower businesses to go beyond what's expected and break new ground. On-site retail and restaurants create a vibrant atmosphere where employees and visitors can experience life beyond the cubicle and delight in the charms of this gorgeous neighborhood setting.



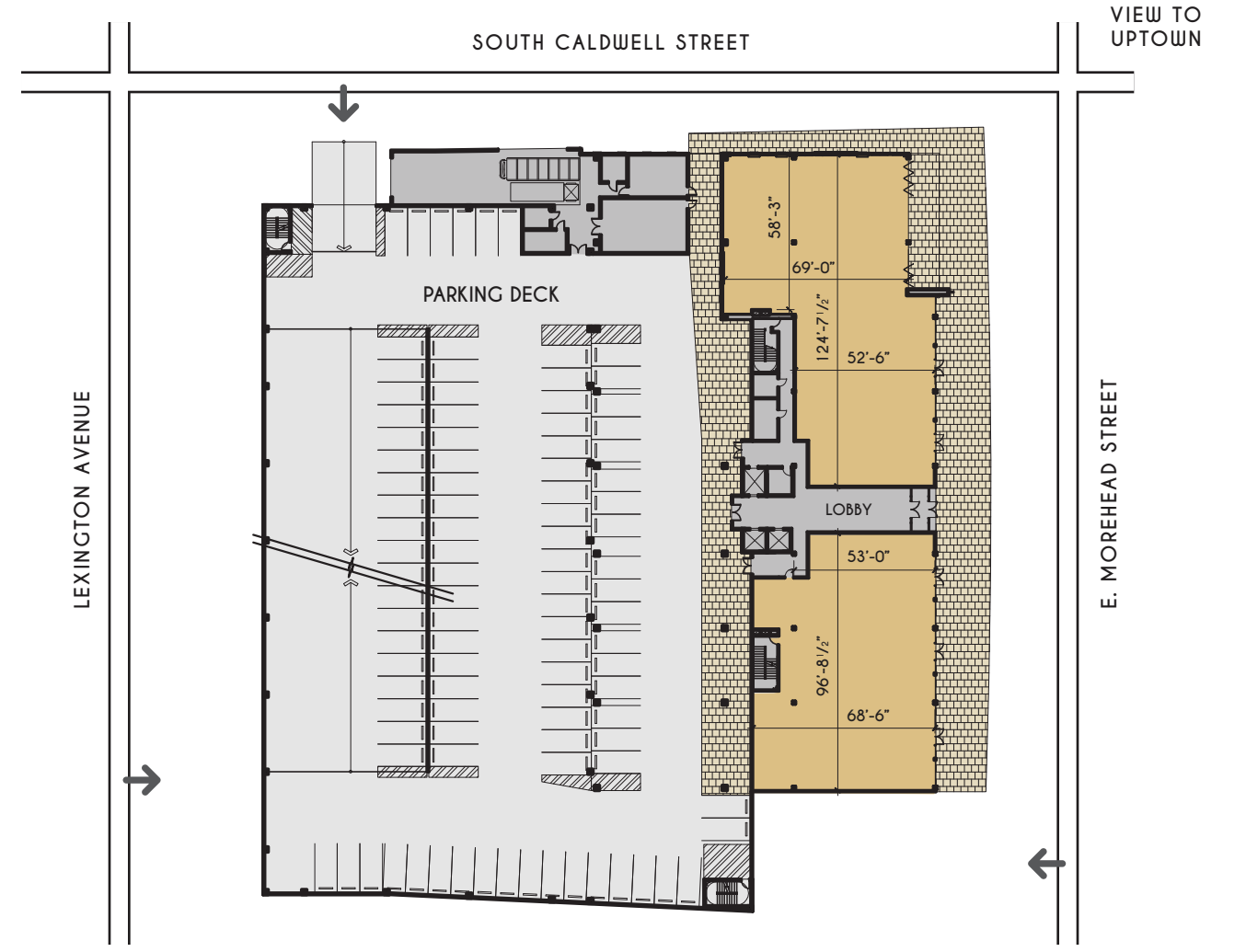
AT A GLANCE

- 7-story, +/- 180,000-square-foot office building
- +/- 15,000 square feet of ground floor retail including on-site coffee shop, casual lunch spot and upscale restaurant
- Convenient, attached, free parking deck
- State-of-the-art conference center
- Three private outdoor terraces with spectacular views of Uptown and the lush tree canopy of Morehead Street
- On-site fitness center with men's and women's locker rooms
- 900-square-foot rooftop terrace with view of Uptown, South End and Dilworth
- Targeting LEED® Gold certification

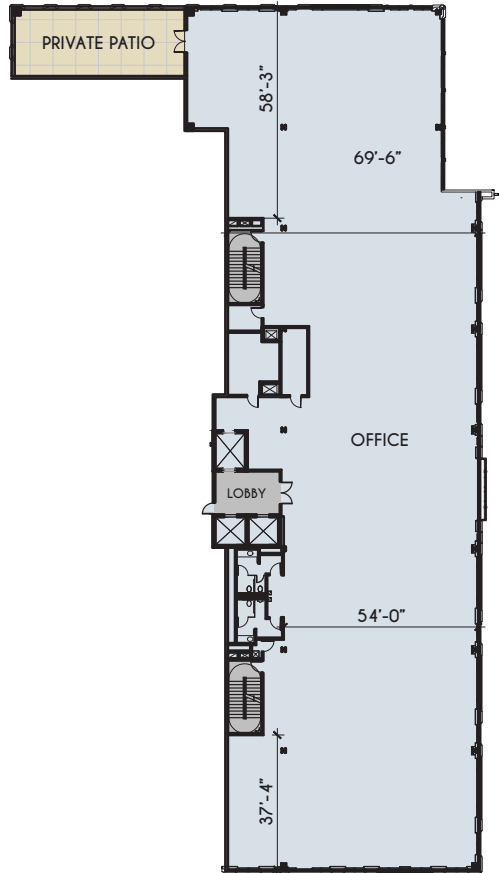




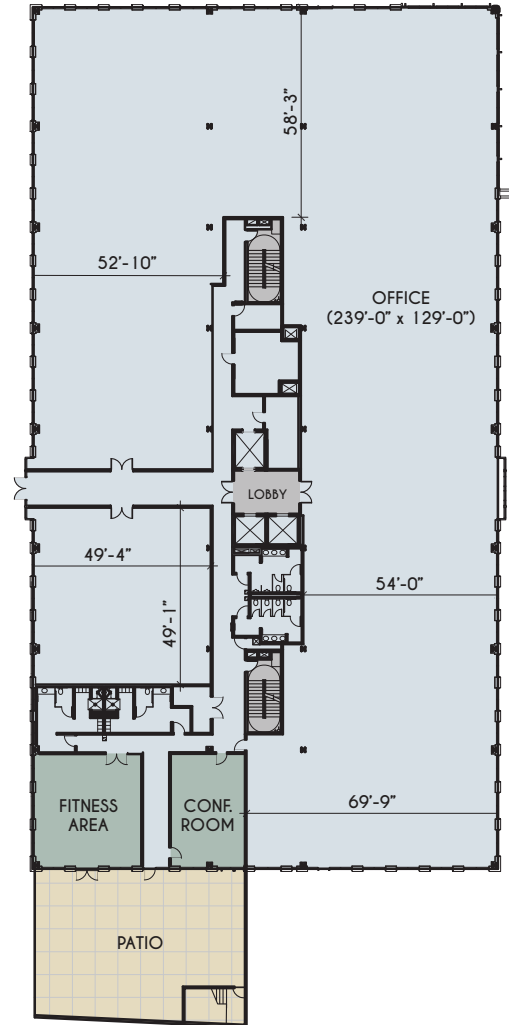
SITE PLAN | 1ST FLOOR RETAIL
 +/- 15,000 SF



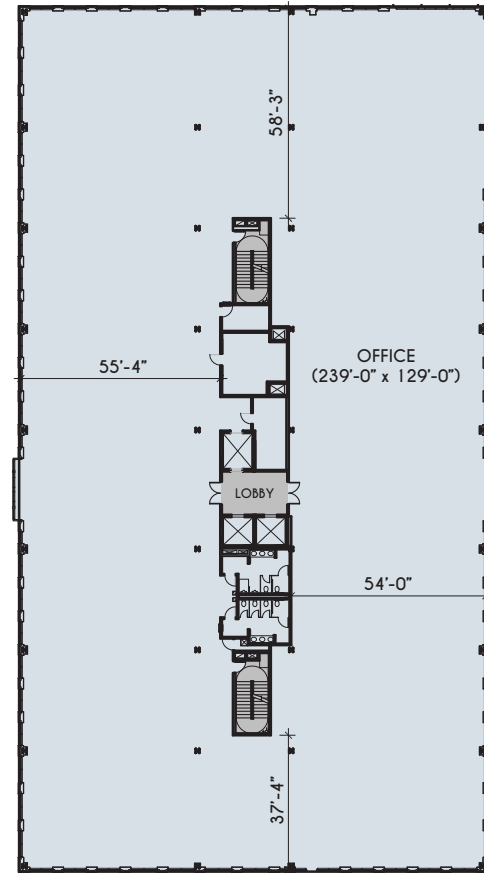
2ND FLOOR
+/- 17,000 SF



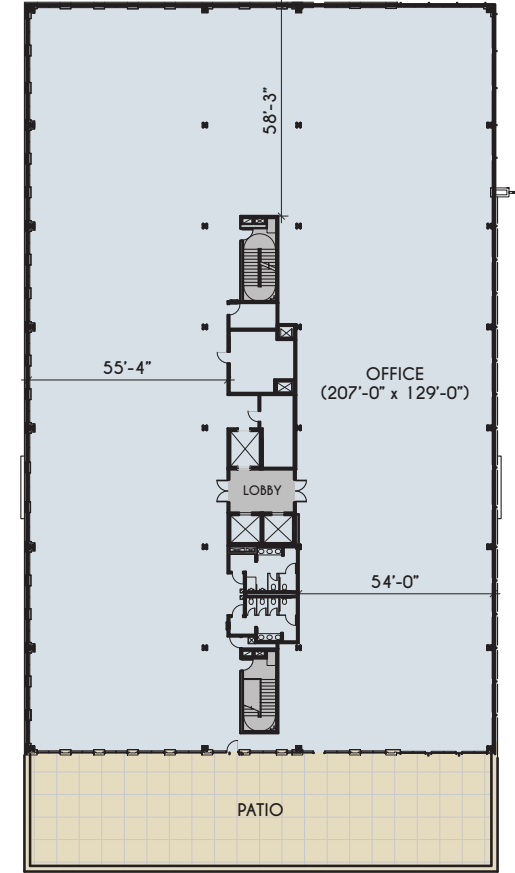
3RD FLOOR
+/- 30,500 SF



4TH, 5TH & 6TH FLOORS
+/- 30,500 SF



7TH FLOOR
+/- 26,000 SF





DILWORTH

SOUTH END

SOUTH BLVD.

CARSON LIGHT
RAIL STATION

YMCA

EAST MOREHEAD ST.

FOR INFORMATION ABOUT PRE-LEASING,
VISIT 500EMOREHEAD.COM.



610 East Morehead Street, Suite 250, Charlotte, NC 28202
office: 704.597.7757 | fax: 704.598.6335
www.beacondevelopment.com