

# BOXER BUILDING

## SMALL OFFICE SUITE AVAILABLE

1000 W. MOREHEAD ST. | SUITE 110 | CHARLOTTE, NC 28208



### FEATURES:

- 316 SF Available
- Small office with Uptown Charlotte views
- The Boxer Building is listed in the National Register of Historic Places; built in 1927
- Lobby was recently renovated in 2017
- Free on-site parking
- Highly visible with immediate access to I-77, I-277 and Charlotte Business District
- Within walking distance to Bank of America Stadium
- Beacon Partners leases and manages over 1 million SF in Midtown and South End



FOR MORE INFORMATION, CONTACT:

**KRISTY VENNING**

704.926.1409 (d) [kristy@beacondevelopment.com](mailto:kristy@beacondevelopment.com)

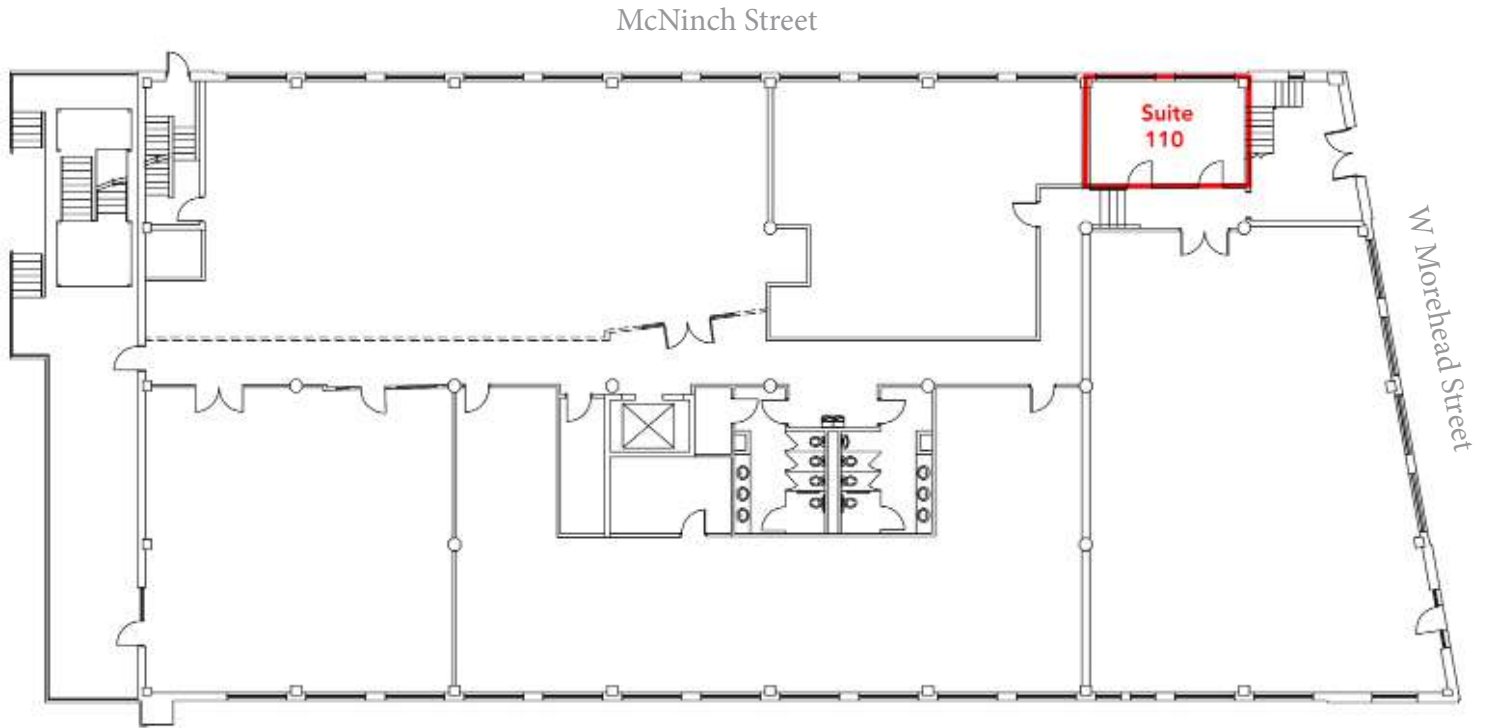
500 East Morehead Street | Suite 200 | Charlotte, NC 28202

[www.beacondevelopment.com](http://www.beacondevelopment.com)



**BOXER BUILDING**  
**SMALL OFFICE SUITE AVAILABLE**  
1000 W. MOREHEAD ST. | SUITE 110 | CHARLOTTE, NC 28208

**FLOOR PLATE:**



FOR MORE INFORMATION, CONTACT:

**KRISTY VENNING**

704.926.1409 (d) [kristy@beacondevelopment.com](mailto:kristy@beacondevelopment.com)

500 East Morehead Street | Suite 200 | Charlotte, NC 28202

[www.beacondevelopment.com](http://www.beacondevelopment.com)

