

# BOXER BUILDING

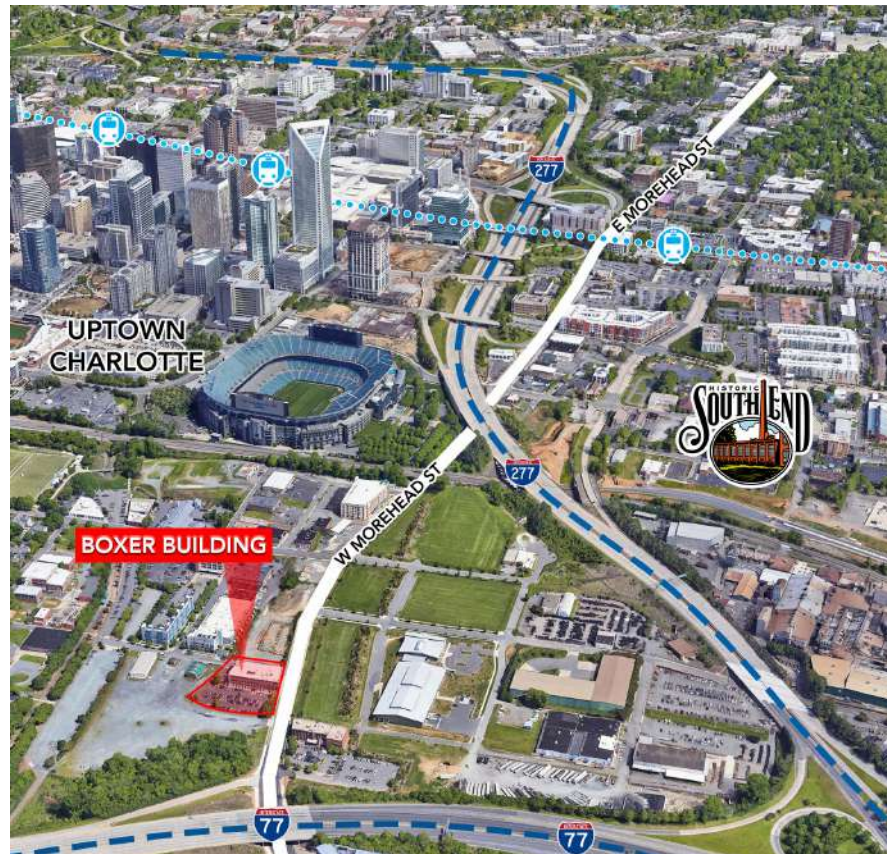
## SMALL OFFICE SUITE AVAILABLE

1000 W. MOREHEAD ST. | SUITE 110 | CHARLOTTE, NC 28208



### FEATURES:

- 316 SF Available
- Small office with Uptown Charlotte views
- The Boxer Building is listed in the National Register of Historic Places; built in 1927
- Lobby was recently renovated in 2017
- Free on-site parking
- Highly visible with immediate access to I-77, I-277 and Charlotte Business District
- Within walking distance to Bank of America Stadium
- Beacon Partners leases and manages over 1 million SF in Midtown and South End



### FOR MORE INFORMATION, CONTACT:

#### KRISTY VENNING

704.926.1409 (d) [kristy@beacondevelopment.com](mailto:kristy@beacondevelopment.com)  
500 East Morehead Street | Suite 200 | Charlotte, NC 28202  
[www.beacondevelopment.com](http://www.beacondevelopment.com)

#### ERIN SHAW

704.926.1414 (d) [erin@beacondevelopment.com](mailto:erin@beacondevelopment.com)  
500 East Morehead Street | Suite 200 | Charlotte, NC 28202  
[www.beacondevelopment.com](http://www.beacondevelopment.com)



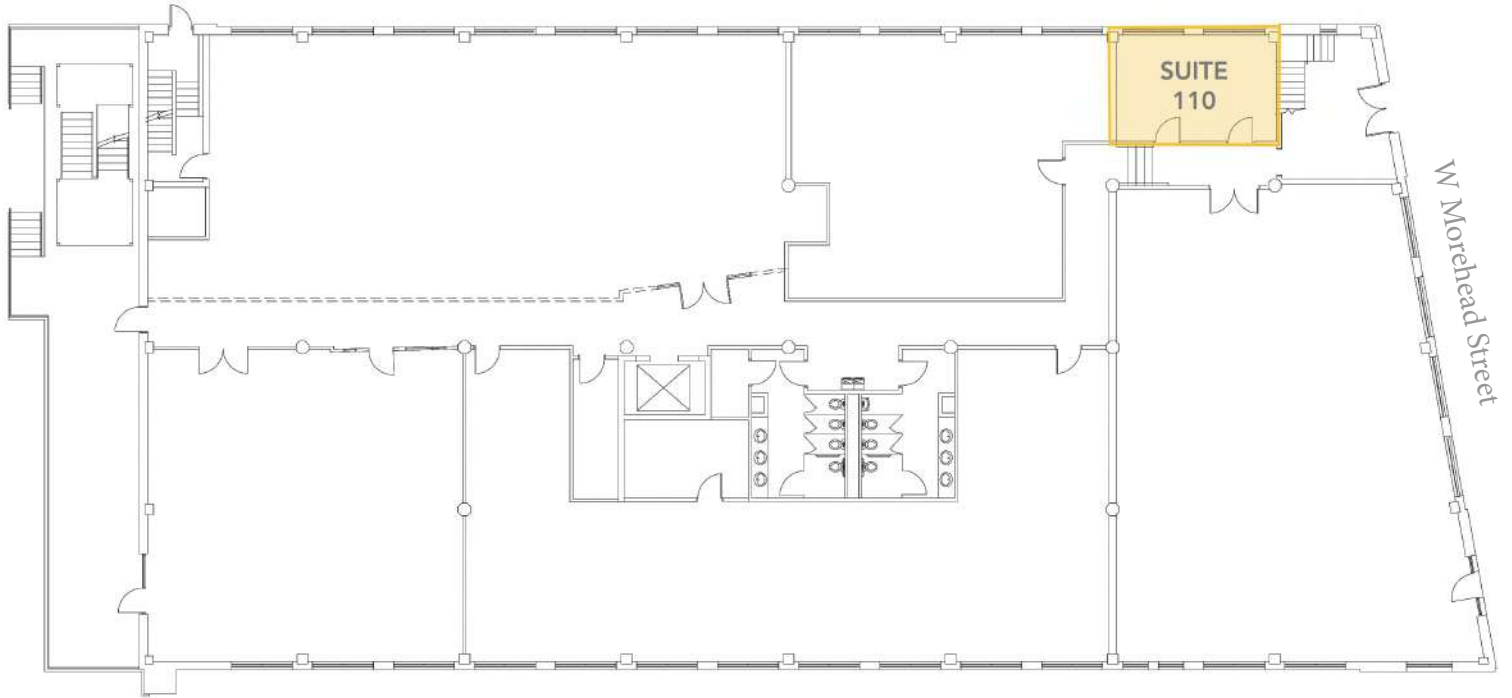


# BOXER BUILDING SMALL OFFICE SUITE AVAILABLE

1000 W. MOREHEAD ST. | SUITE 110 | CHARLOTTE, NC 28208

## FLOOR PLATE:

McNinch Street



FOR MORE INFORMATION, CONTACT:

### KRISTY VENNING

704.926.1409 (d) [kristy@beacondevelopment.com](mailto:kristy@beacondevelopment.com)  
500 East Morehead Street | Suite 200 | Charlotte, NC 28202  
[www.beacondevelopment.com](http://www.beacondevelopment.com)

### ERIN SHAW

704.926.1414 (d) [erin@beacondevelopment.com](mailto:erin@beacondevelopment.com)  
500 East Morehead Street | Suite 200 | Charlotte, NC 28202  
[www.beacondevelopment.com](http://www.beacondevelopment.com)

