

# 1016 EUCLID AVENUE

MIDTOWN SPACE AVAILABLE FOR LEASE | CHARLOTTE, NC 28202



SINGLE TENANT BUILDING AVAILABLE

## 2,476 SF

### FEATURES:

- Charming Dilworth house; Consists of six offices, conference room, break room, reception area and basement for storage
- Located at the corner of E Morehead St & Euclid Ave
- Free surface parking with 9 designated spaces
- Numerous Midtown amenities located within immediate area, including restaurants, retail; Adjacent to the Dowd YMCA
- Less than 5 minutes from I-77, I-277 and Uptown Charlotte
- Beacon owns, leases and manages over 1 million SF in Midtown and South End



FOR MORE INFORMATION, CONTACT:

**ERIN SHAW**  
704.926.1414 (d) | [erin@beacondevelopment.com](mailto:erin@beacondevelopment.com)  
500 East Morehead Street | Suite 200 | Charlotte, NC 28202  
[www.beacondevelopment.com](http://www.beacondevelopment.com)

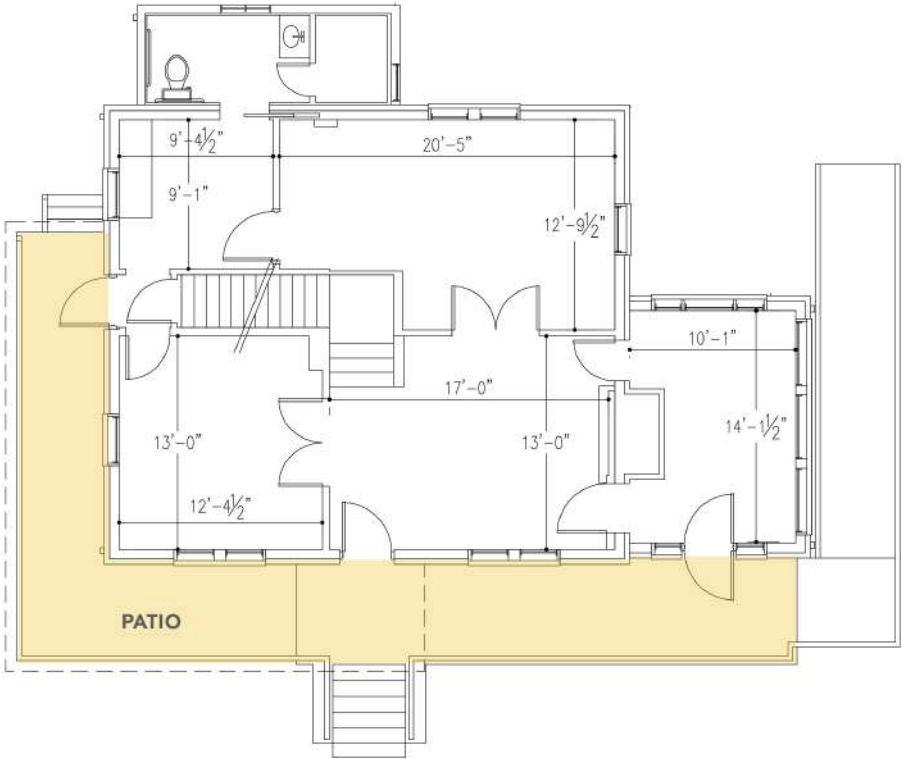
**KRISTY VENNING**  
704.926.1409 (d) | [kristy@beacondevelopment.com](mailto:kristy@beacondevelopment.com)  
500 East Morehead Street | Suite 200 | Charlotte, NC 28202  
[www.beacondevelopment.com](http://www.beacondevelopment.com)



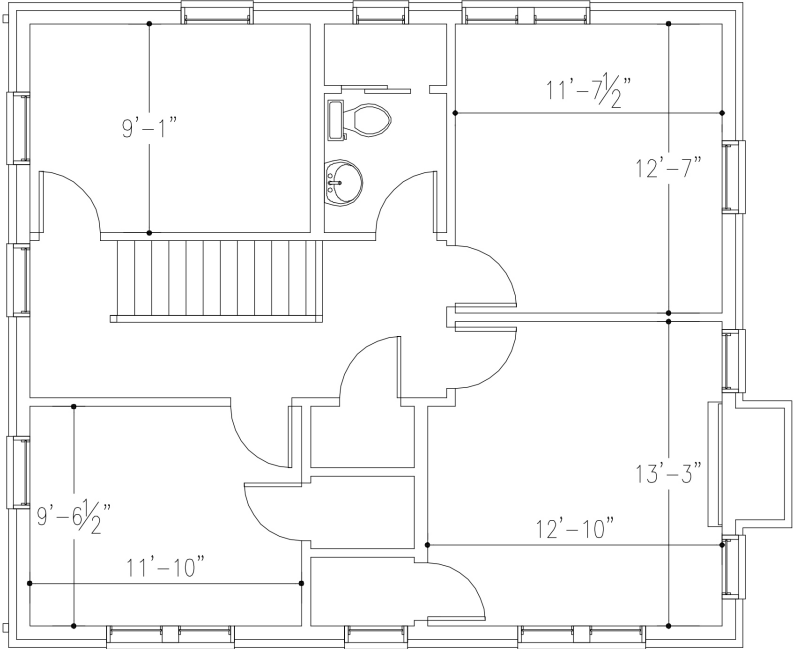
# 1016 EUCLID AVENUE

MIDTOWN SPACE AVAILABLE FOR LEASE | CHARLOTTE, NC 28202

## FIRST FLOOR:



## SECOND FLOOR:



FOR MORE INFORMATION, CONTACT:

**ERIN SHAW**  
704.926.1414 (d) | [erin@beacondevelopment.com](mailto:erin@beacondevelopment.com)  
500 East Morehead Street | Suite 200 | Charlotte, NC 28202  
[www.beacondevelopment.com](http://www.beacondevelopment.com)

**KRISTY VENNING**  
704.926.1409 (d) | [kristy@beacondevelopment.com](mailto:kristy@beacondevelopment.com)  
500 East Morehead Street | Suite 200 | Charlotte, NC 28202  
[www.beacondevelopment.com](http://www.beacondevelopment.com)



All information regarding the property was obtained from sources deemed reliable but no warranty or representation is made of the accuracy thereof, and the property is subject to prior sale, lease or withdrawal.