

1016 EUCLID AVENUE

MIDTOWN SPACE AVAILABLE FOR LEASE | CHARLOTTE, NC 28202



SINGLE TENANT BUILDING AVAILABLE

2,476 SF

FEATURES:

- Charming Dilworth house; Consists of six offices, conference room, break room, reception area and basement for storage
- Located at the corner of E Morehead St & Euclid Ave
- Free surface parking with 7 designated spaces
- Numerous Midtown amenities located within immediate area, including restaurants, retail; Adjacent to the Dowd YMCA
- Less than 5 minutes from I-77, I-277 and Uptown Charlotte
- Beacon owns, leases and manages over 1 million SF in Midtown and South End



FOR MORE INFORMATION, CONTACT:

ERIN SHAW

704.926.1414 (d) | erin@beacondevelopment.com

500 East Morehead Street | Suite 200 | Charlotte, NC 28202

www.beacondevelopment.com

KRISTY VENNING

704.926.1409 (d) | kristy@beacondevelopment.com

500 East Morehead Street | Suite 200 | Charlotte, NC 28202

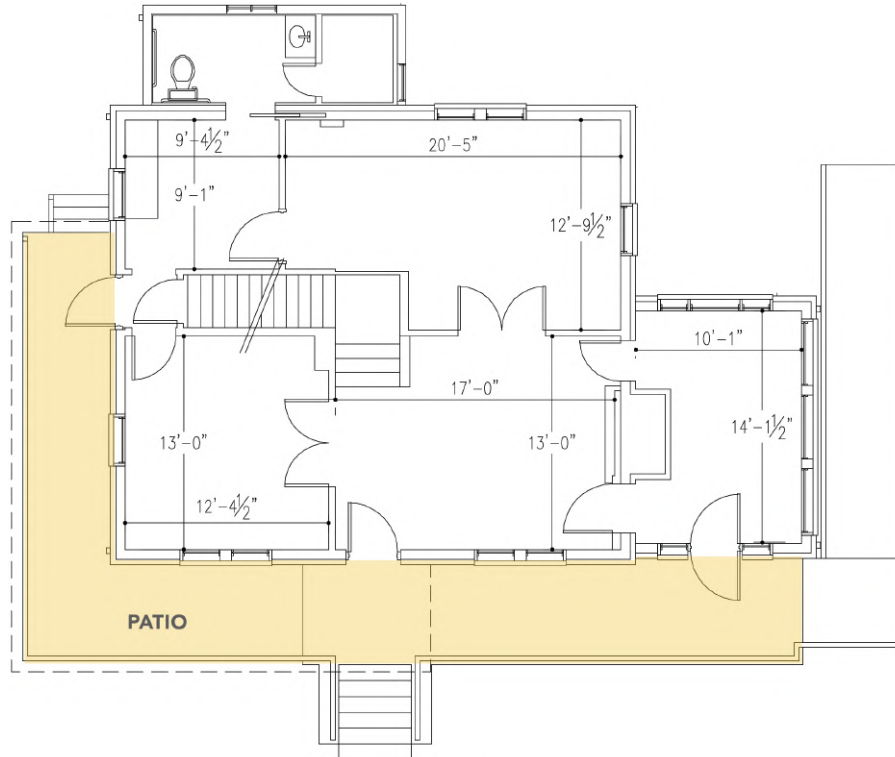
www.beacondevelopment.com



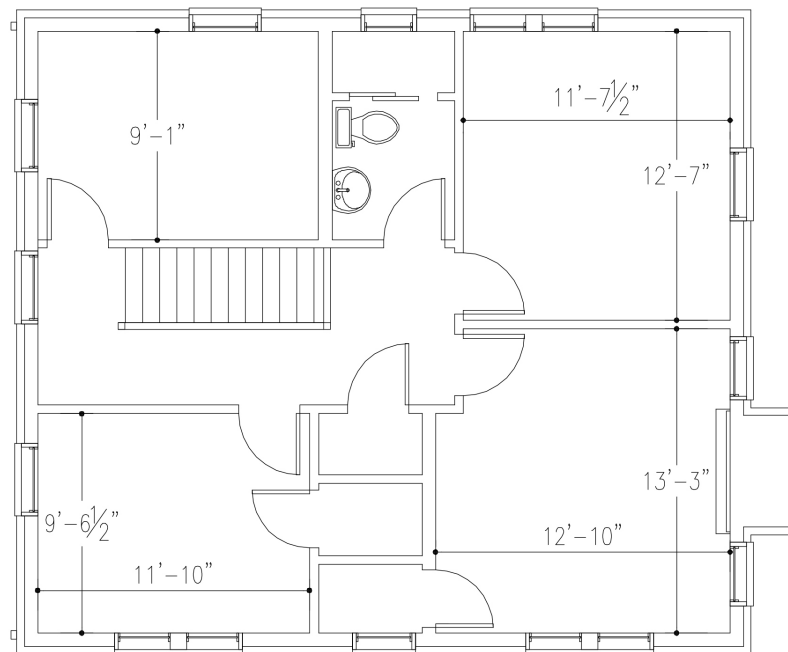
1016 EUCLID AVENUE

MIDTOWN SPACE AVAILABLE FOR LEASE | CHARLOTTE, NC 28202

FIRST FLOOR:



SECOND FLOOR:



FOR MORE INFORMATION, CONTACT:

ERIN SHAW
704.926.1414 (d) | erin@beacondevelopment.com
500 East Morehead Street | Suite 200 | Charlotte, NC 28202
www.beacondevelopment.com

KRISTY VENNING
704.926.1409 (d) kristy@beacondevelopment.com
500 East Morehead Street | Suite 200 | Charlotte, NC 28202
www.beacondevelopment.com

