

1016 EUCLID AVENUE

MIDTOWN SPACE AVAILABLE FOR LEASE | CHARLOTTE, NC 28202



SINGLE TENANT BUILDING AVAILABLE

2,476 SF

FEATURES:

- Charming Dilworth house; Consists of six offices, conference room, break room, reception area and basement for storage
- Located at the corner of E Morehead St & Euclid Ave
- Free surface parking with 9 designated spaces
- Numerous Midtown amenities located within immediate area, including restaurants, retail; Adjacent to the Dowd YMCA
- Less than 5 minutes from I-77, I-277 and Uptown Charlotte
- Beacon owns, leases and manages over 1 million SF in Midtown and South End



FOR MORE INFORMATION, CONTACT:

KRISTY VENNING

704.926.1409 (d) kristy@beacondevelopment.com

500 East Morehead Street | Suite 200 | Charlotte, NC 28202

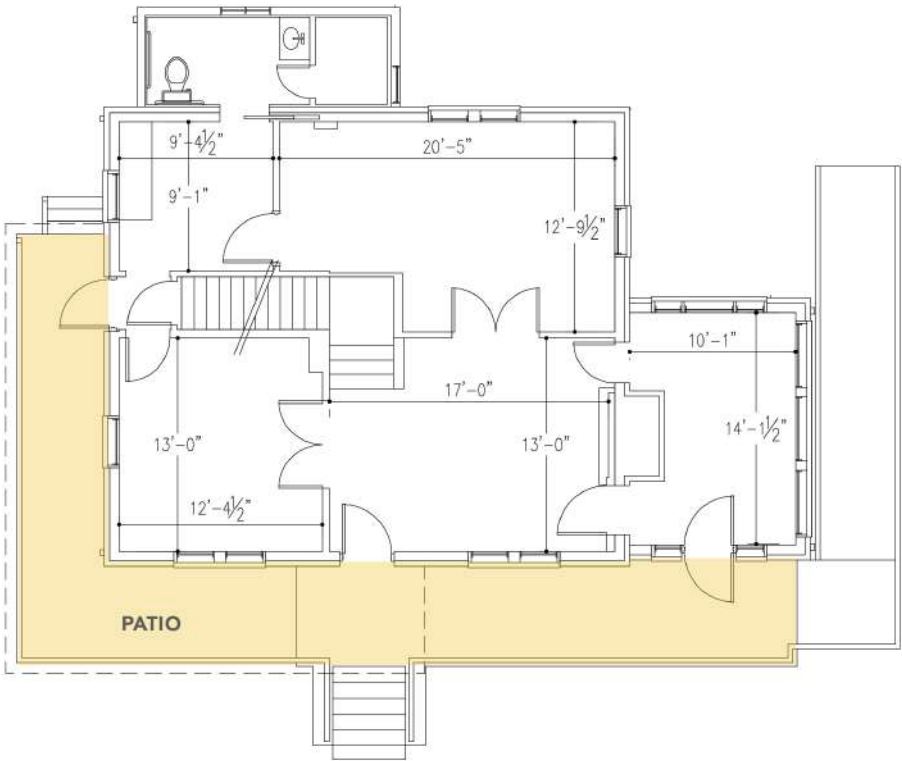
www.beacondevelopment.com



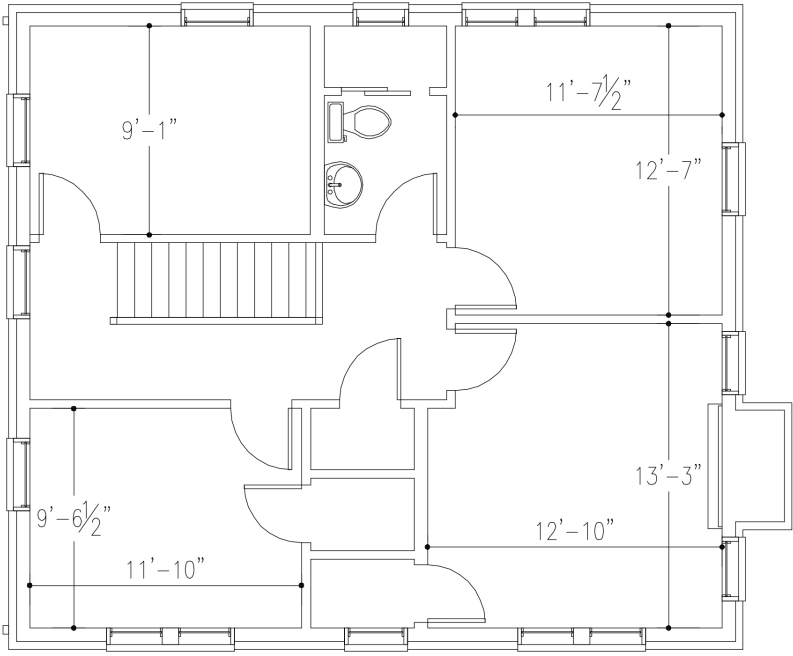
1016 EUCLID AVENUE

MIDTOWN SPACE AVAILABLE FOR LEASE | CHARLOTTE, NC 28202

FIRST FLOOR: +/-1,169 SF



SECOND FLOOR: +/-892 SF



FOR MORE INFORMATION, CONTACT:

KRISTY VENNING
704.926.1409 (d) kristy@beacondevelopment.com
500 East Morehead Street | Suite 200 | Charlotte, NC 28202
www.beacondevelopment.com



All information regarding the property was obtained from sources deemed reliable but no warranty or representation is made of the accuracy thereof, and the property is subject to prior sale, lease or withdrawal.