

MIDTOWN OFFICE SPACE FOR LEASE

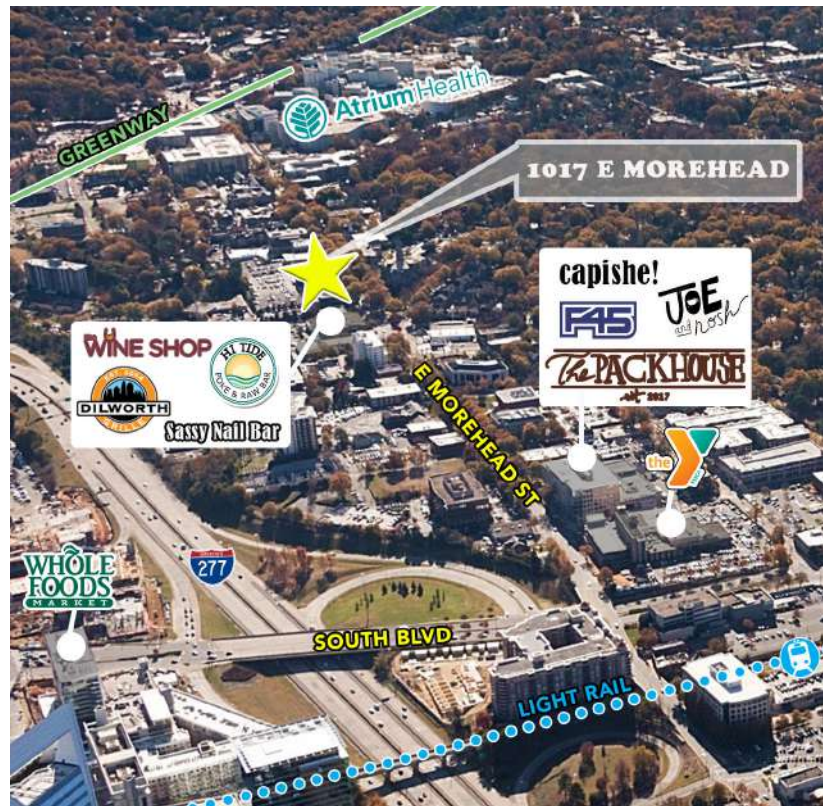
1017 E MOREHEAD STREET | SUITES 150, 200 & 300 | CHARLOTTE, NC 28204



±3,603 - 23,355 SF

FEATURES:

- A 29,615 SF premier three-story office building with excellent visibility on Morehead St and views of Uptown Charlotte
- Suites 150, 200 & 300 total to 23,355 SF
- Future expansion rights to lease entire building
- Abundant free surface parking: 3.2 per 1,000 ratio
- Less than 2 minutes from I-77, I-277 and Charlotte CBD
- Numerous amenities nearby including Dowd YMCA, the Metropolitan, The Little Sugar Creek Greenway and Atrium Health's Main Campus
- Restaurants such as, Joe and Nosh, Capishe, Hi Tide Poke & Raw Bar, The Packhouse, Dilworth Neighborhood Grille are all within walking distance
- Beacon Partners leases and manages over 1 million SF in Midtown and South End



FOR MORE INFORMATION, CONTACT:

KRISTY VENNING

704.926.1409 (d) kristy@beacondevelopment.com

500 East Morehead Street | Suite 200 | Charlotte, NC 28202

www.beacondevelopment.com

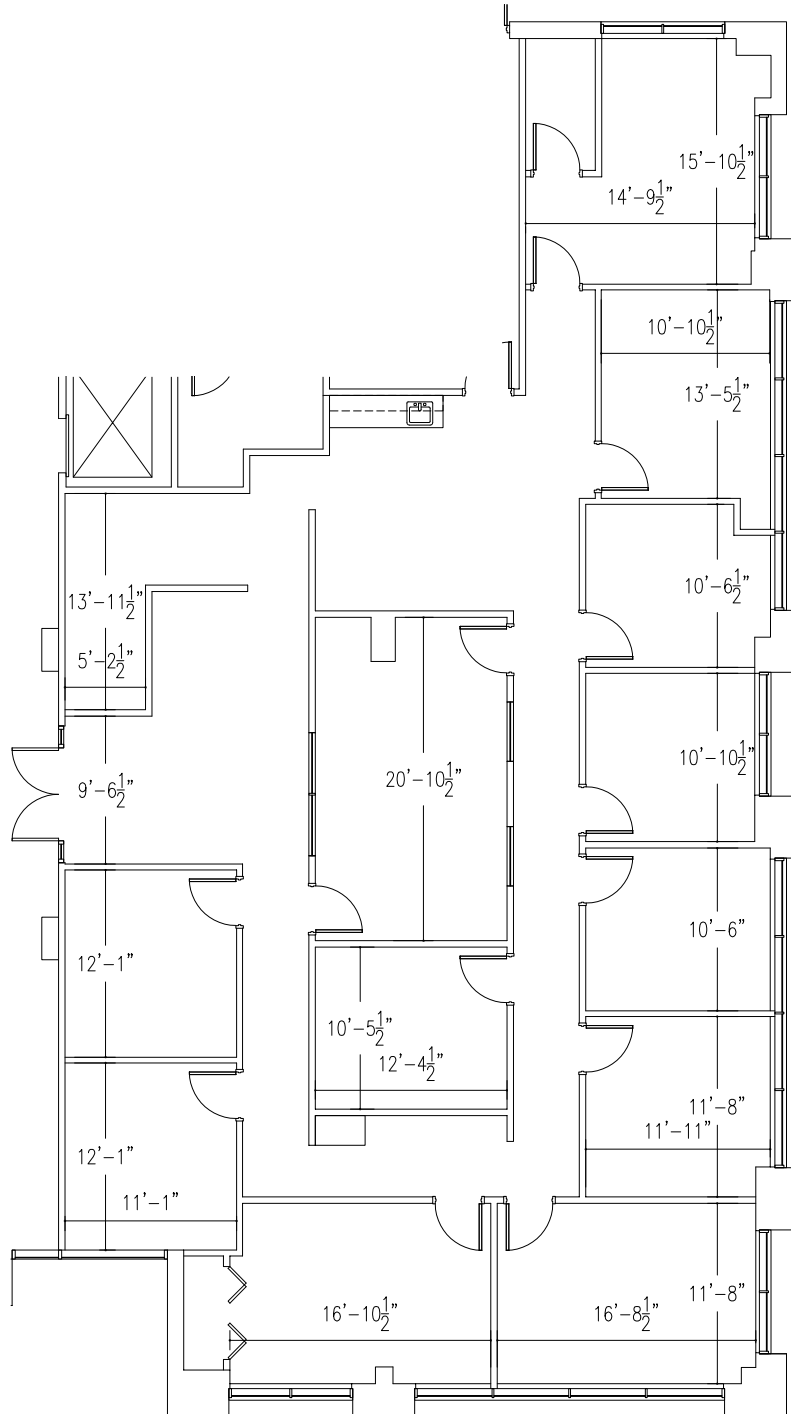


MIDTOWN OFFICE SPACE FOR LEASE

1017 E MOREHEAD STREET | SUITES 150, 200 & 300 | CHARLOTTE, NC 28204

FLOOR PLAN

SUITE 150: 3,603 SF



FOR MORE INFORMATION, CONTACT:

KRISTY VENNING

704.926.1409 (d) kristy@beacondevelopment.com

500 East Morehead Street | Suite 200 | Charlotte, NC 28202

www.beacondevelopment.com



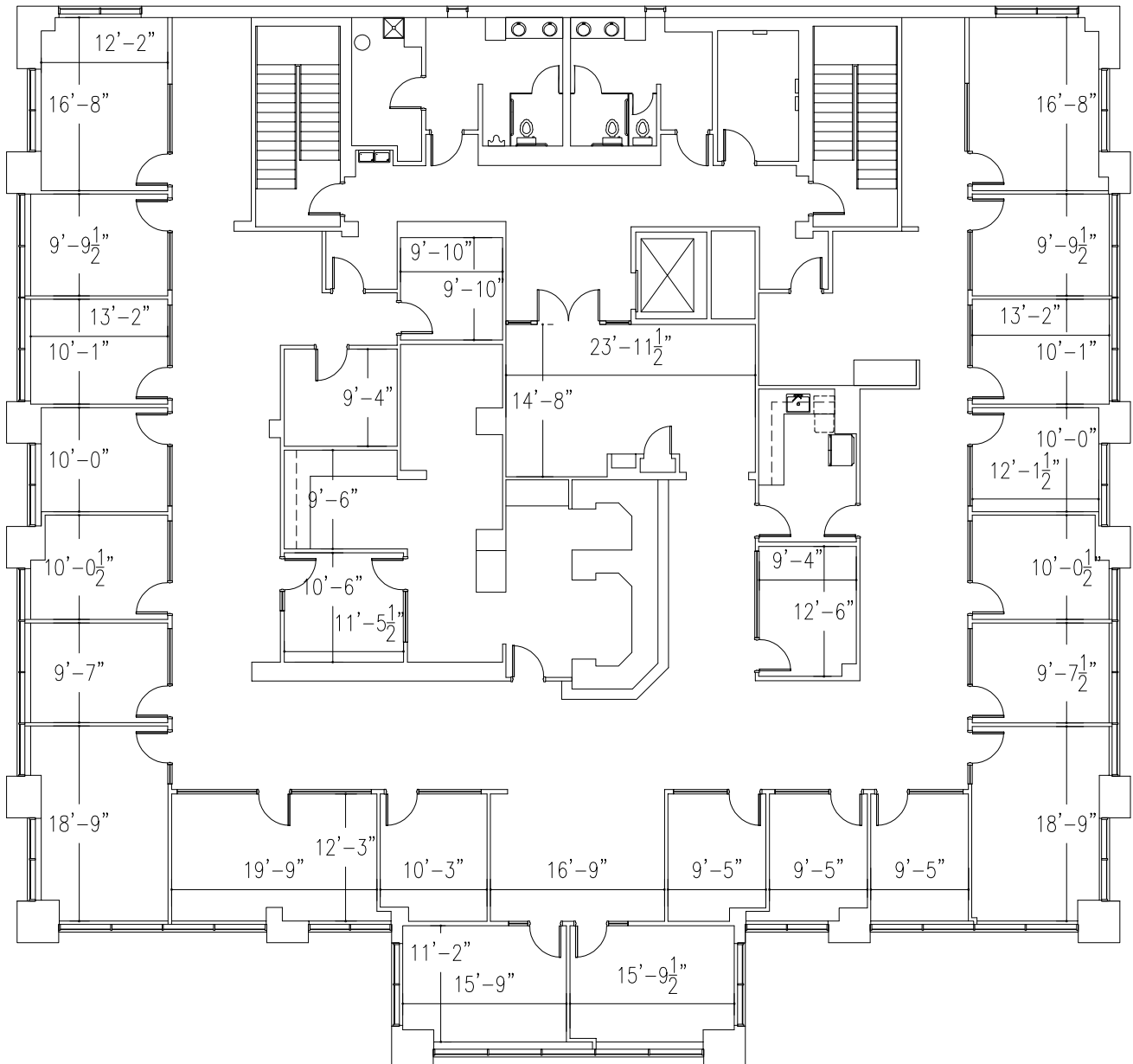
**BEACON
PARTNERS**

MIDTOWN OFFICE SPACE FOR LEASE

1017 E MOREHEAD STREET | SUITES 150, 200 & 300 | CHARLOTTE, NC 28204

FLOOR PLAN

SUITE 200: 9,876 SF



FOR MORE INFORMATION, CONTACT:

KRISTY VENNING

704.926.1409 (d) kristy@beacondevelopment.com

500 East Morehead Street | Suite 200 | Charlotte, NC 28202

www.beacondevelopment.com



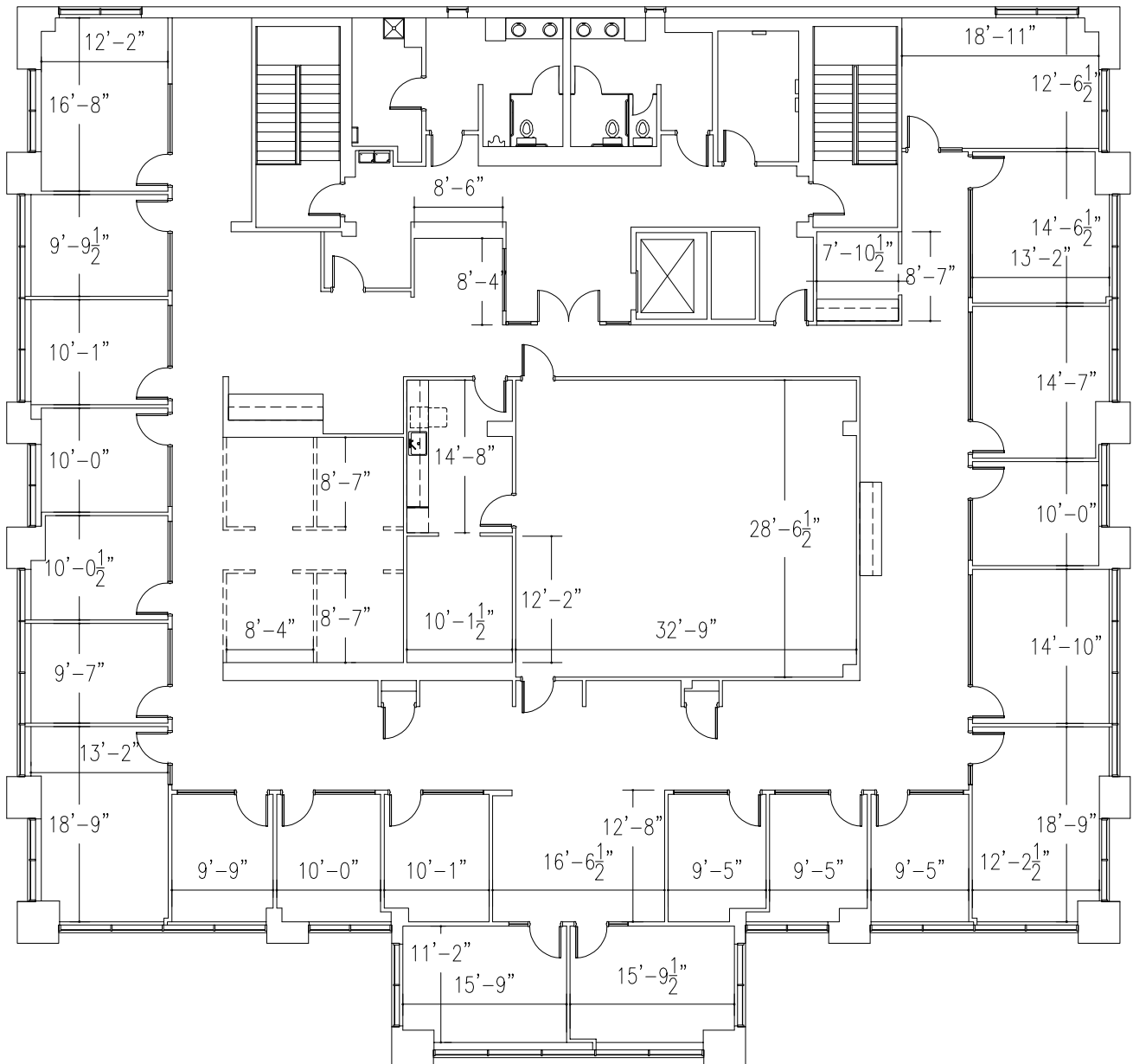
**BEACON
PARTNERS**

MIDTOWN OFFICE SPACE FOR LEASE

1017 E MOREHEAD STREET | SUITES 150, 200 & 300 | CHARLOTTE, NC 28204

FLOOR PLAN

SUITE 300: 9,876 SF



FOR MORE INFORMATION, CONTACT:

KRISTY VENNING

704.926.1409 (d) kristy@beacondevelopment.com

500 East Morehead Street | Suite 200 | Charlotte, NC 28202

www.beacondevelopment.com

