

# MIDTOWN OFFICE SPACE FOR LEASE

1017 E MOREHEAD STREET | SUITES 200 | CHARLOTTE, NC 28204



**±9,876 SF**

## FEATURES:

- A 29,615 SF premier three-story office building with excellent visibility on Morehead Street and views of Uptown Charlotte
- Future expansion rights to lease entire building
- Abundant free surface parking: 3.2 per 1,000 ratio
- Less than 2 minutes from I-77, I-277 and Charlotte CBD
- Numerous amenities nearby including Dowd YMCA, the Metropolitan, The Little Sugar Creek Greenway and Atrium Health's Main Campus
- Beacon Partners leases and manages over 1 million SF in Midtown and South End



FOR MORE INFORMATION, CONTACT:

**ERIN SHAW**  
**704.926.1414 (d) [erin@beacondevelopment.com](mailto:erin@beacondevelopment.com)**  
500 East Morehead Street | Suite 200 | Charlotte, NC 28202  
[www.beacondevelopment.com](http://www.beacondevelopment.com)

**KRISTY VENNING**  
**704.926.1409 (d) [kristy@beacondevelopment.com](mailto:kristy@beacondevelopment.com)**  
500 East Morehead Street | Suite 200 | Charlotte, NC 28202  
[www.beacondevelopment.com](http://www.beacondevelopment.com)

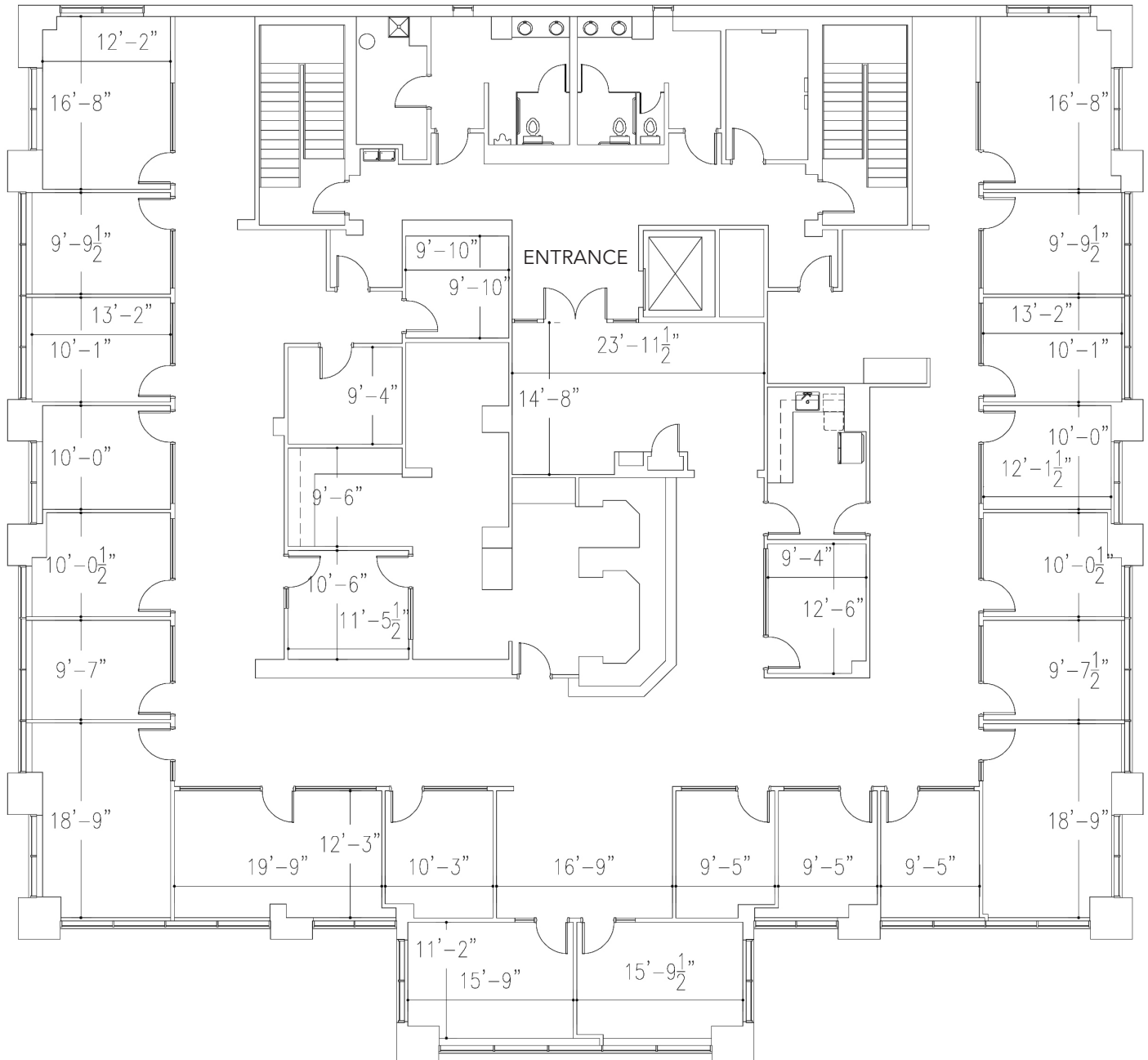


# MIDTOWN OFFICE SPACE FOR LEASE

1017 E MOREHEAD STREET | SUITES 200 | CHARLOTTE, NC 28204

## FLOOR PLAN:

**SUITE 200: 9,876 SF**



FOR MORE INFORMATION, CONTACT:

**ERIN SHAW**  
704.926.1414 (d) [erin@beacondevelopment.com](mailto:erin@beacondevelopment.com)  
500 East Morehead Street | Suite 200 | Charlotte, NC 28202  
[www.beacondevelopment.com](http://www.beacondevelopment.com)

**KRISTY VENNING**  
704.926.1409 (d) [kristy@beacondevelopment.com](mailto:kristy@beacondevelopment.com)  
500 East Morehead Street | Suite 200 | Charlotte, NC 28202  
[www.beacondevelopment.com](http://www.beacondevelopment.com)

