



# MIDTOWN BUILDING FOR SALE

1016 & 1020 EUCLID AVENUE  
CHARLOTTE, NC 28203

## TWO SINGLE TENANT BUILDINGS AVAILABLE

- 7,866 SF Total
  - » 1016 Euclid Ave: 2,476 SF
  - » 1020 Euclid Ave: 5,390 SF
- Parcel ID: 12302306
- Asking Price: \$4,250,000 (\$540psf)
- 0.465 acres on the corner of Lexington Ave and Euclid Ave
- Ideal for single tenant users
- 22 surface parking spaces and surrounding street parking
- Within walking distance to the Carson Station LYNX Light Rail
- Numerous amenities located in the immediate area; adjacent to the Dowd YMCA and Atrium Health's Pearl District
- Less than 3 miles from I-77, I-277 and Charlotte CBD





# MIDTOWN BUILDING FOR SALE

1016 & 1020 EUCLID AVENUE  
 CHARLOTTE, NC 28203

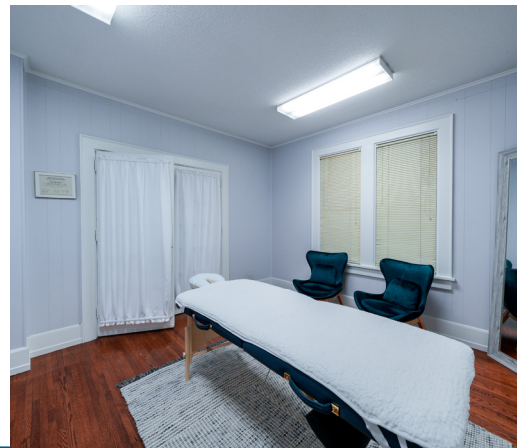




# 1016 EUCLID AVENUE

CHARLOTTE, NC 28203

±2,476 SF FOR SALE





# 1020 EUCLID AVENUE

CHARLOTTE, NC 28203

**±5,390 SF FOR SALE**



**CLAIRE SHEALY**  
704.607.1984 (c) | 704.926.1409 (d)  
claire@beacondevelopment.com