

# SINGLE TENANT BUILDING FOR LEASE

1020 EUCLID AVENUE | MIDTOWN | CHARLOTTE, NC



## OFFICE SPACE AVAILABLE FOR LEASE

### 5,390 SF

- Stand alone office building
- Consists of a good mix of private offices, open area, conference room and break room
- 15 reserved surface parking spaces + street parking
- Within walking distance to the Carson Street LYNX stop/light rail station
- Numerous amenities located within immediate area, including restaurants, retail: Adjacent to the Dowd YMCA
- Less than 2 miles from I-77, I-277 and Charlotte CBD
- Beacon Partners leases and manages over 1 million SF in Midtown and South End



FOR MORE INFORMATION, CONTACT:

**ERIN SHAW**  
704.926.1414 (d) [erin@beacondevelopment.com](mailto:erin@beacondevelopment.com)  
500 East Morehead Street | Suite 200 | Charlotte, NC 28202  
[www.beacondevelopment.com](http://www.beacondevelopment.com)

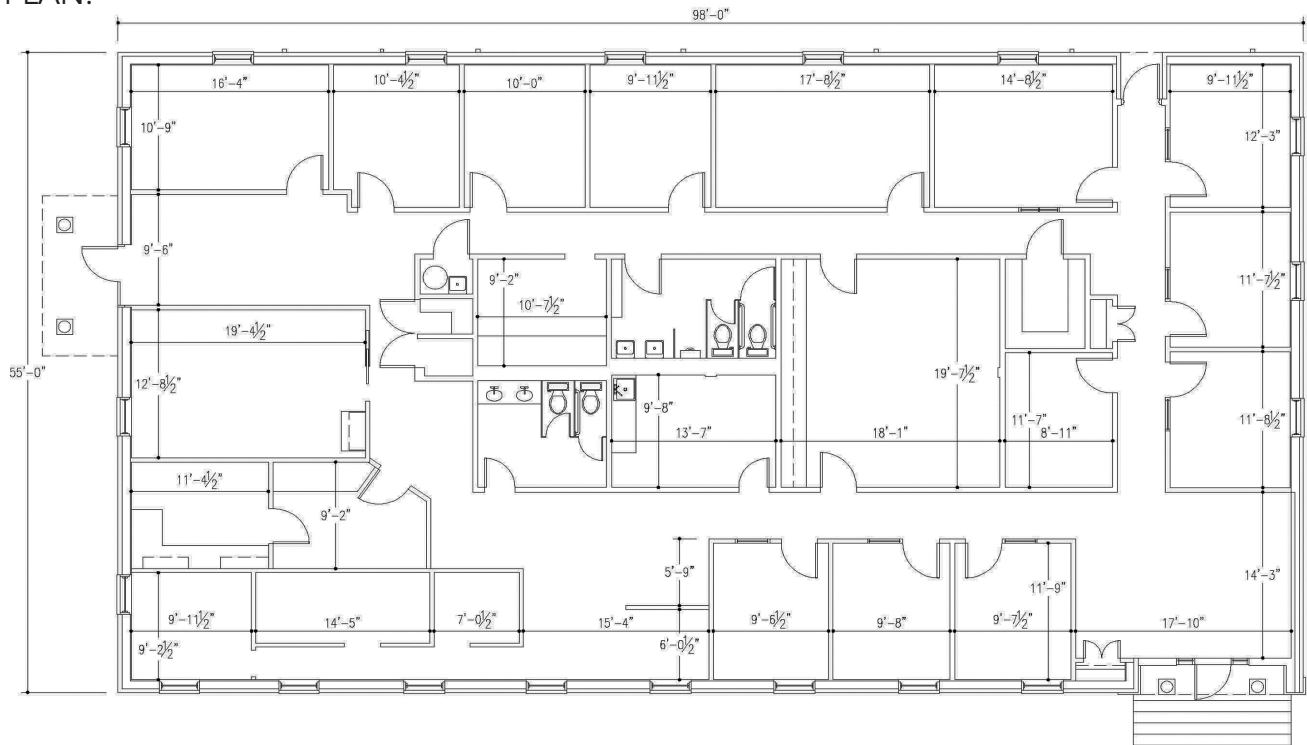
**KRISTY VENNING**  
704.926.1409 (d) [kristy@beacondevelopment.com](mailto:kristy@beacondevelopment.com)  
500 East Morehead Street | Suite 200 | Charlotte, NC 28202  
[www.beacondevelopment.com](http://www.beacondevelopment.com)



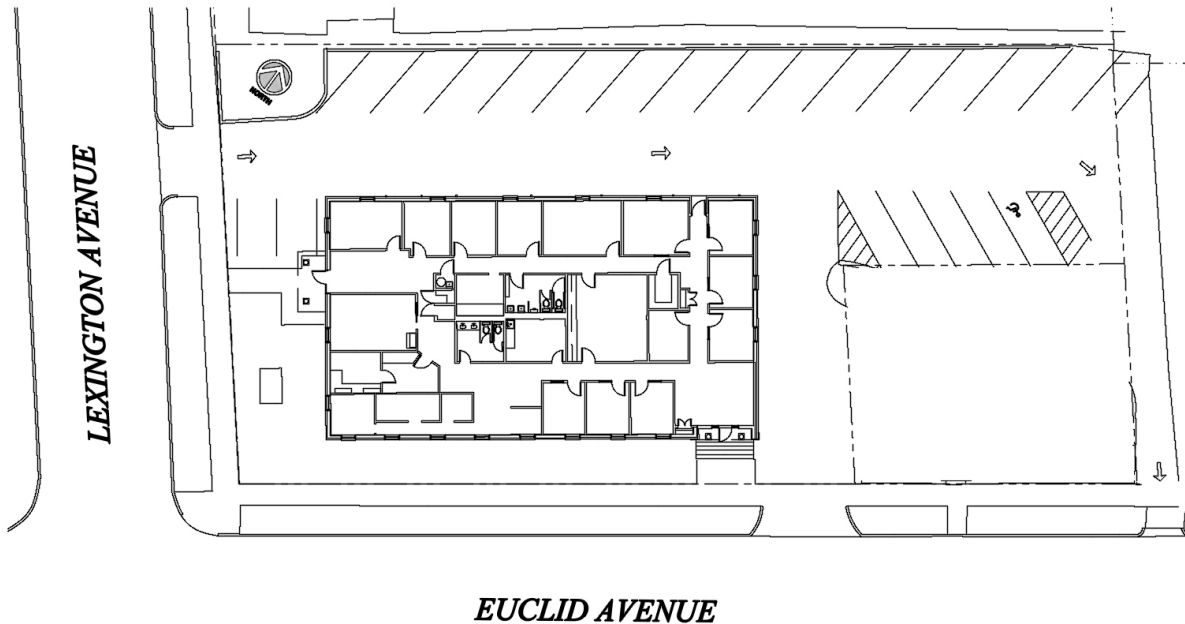
# SINGLE TENANT BUILDING FOR LEASE

1020 EUCLID AVE | MIDTOWN | CHARLOTTE, NC 28202

## FLOOR PLAN:



## SITE PLAN:



FOR MORE INFORMATION, CONTACT:

**ERIN SHAW**  
704.926.1414 (d) [erin@beacondevelopment.com](mailto:erin@beacondevelopment.com)  
500 East Morehead Street | Suite 200 | Charlotte, NC 28202  
[www.beacondevelopment.com](http://www.beacondevelopment.com)

**KRISTY VENNING**  
704.926.1409 (d) [kristy@beacondevelopment.com](mailto:kristy@beacondevelopment.com)  
500 East Morehead Street | Suite 200 | Charlotte, NC 28202  
[www.beacondevelopment.com](http://www.beacondevelopment.com)

