

SINGLE TENANT BUILDING FOR LEASE

1020 EUCLID AVENUE | MIDTOWN | CHARLOTTE, NC



OFFICE SPACE AVAILABLE FOR LEASE

5,390 SF

- Stand alone office building
- Consists of a good mix of private offices, open area, conference room and break room
- 15 reserved surface parking spaces + street parking
- Within walking distance to the Carson Street LYNX stop/light rail station
- Numerous amenities located within immediate area, including restaurants, retail: Adjacent to the Dowd YMCA
- Less than 2 miles from I-77, I-277 and Charlotte CBD
- Beacon Partners leases and manages over 1 million SF in Midtown and South End



FOR MORE INFORMATION, CONTACT:

KRISTY VENNING

704.926.1409 (d) kristy@becondevelopment.com

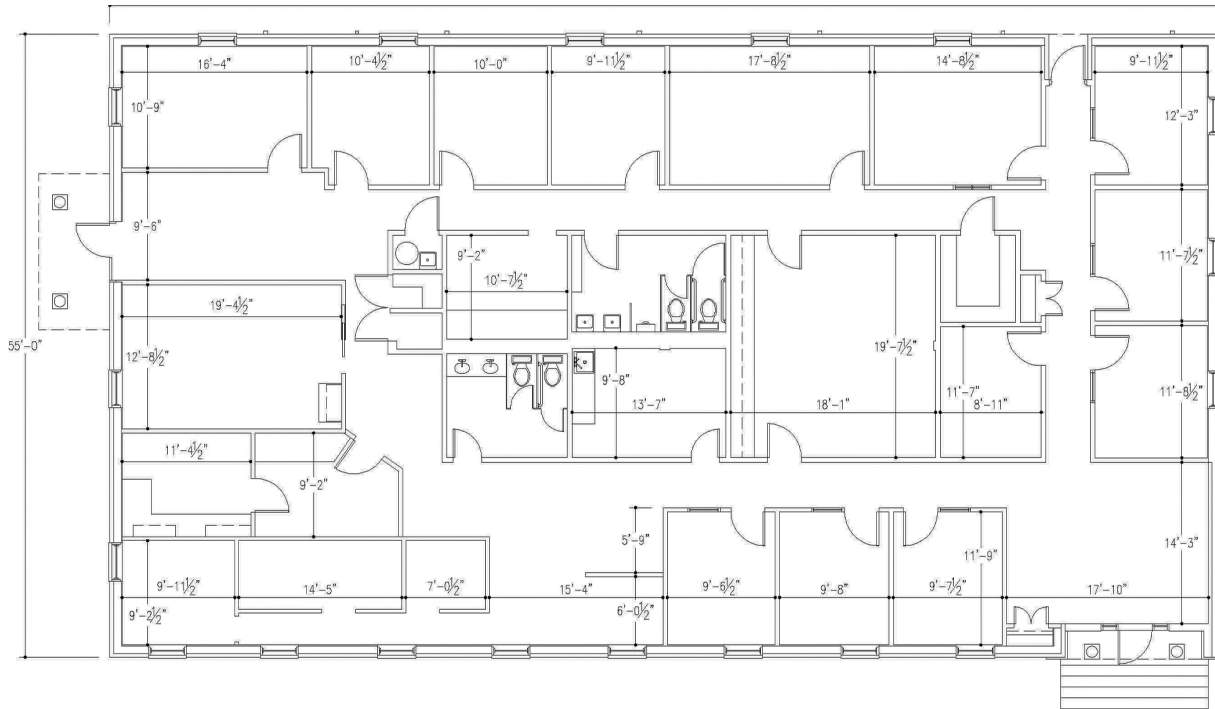
500 E. Morehead Street | Suite 200 | Charlotte, NC 28202 | becondevelopment.com



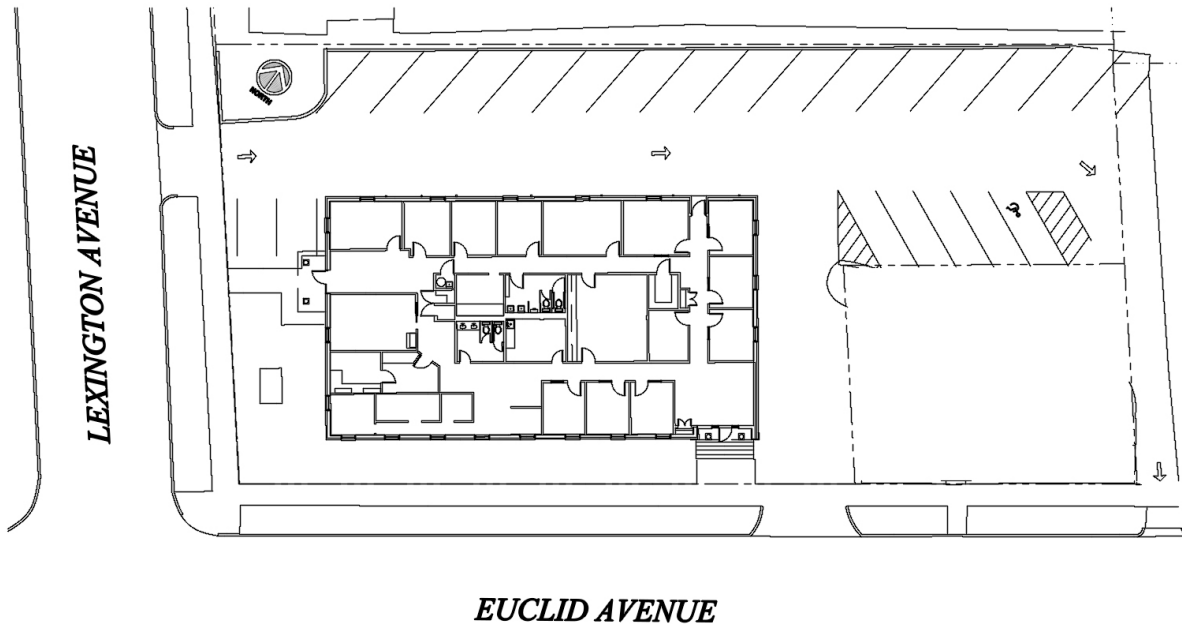
SINGLE TENANT BUILDING FOR LEASE

1020 EUCLID AVE | MIDTOWN | CHARLOTTE, NC 28202

FLOOR PLAN:



SITE PLAN:



FOR MORE INFORMATION, CONTACT:

KRISTY VENNING

704.926.1409 (d) kristy@beacondevelopment.com

500 E. Morehead Street | Suite 200 | Charlotte, NC 28202 | beacondevelopment.com

