

# ±4,000 SF SINGLE TENANT, WAREHOUSE IN CENTRAL CHARLOTTE

Atando Business Park | 1025 McClelland Court | Charlotte, NC 28206



## FEATURES

- ±4,000 SF single-tenant facility
- ±1,000 SF of office
- 1 (10' x 10') drive-in door with concrete ramp
- 12' 4" clear height
- Fenced outside storage in rear of building
- Wet sprinkler
- Solid brick on block construction
- Locally owned and managed professional park, convenient to the Charlotte CBD and UPS facility
- Central Charlotte location with direct access to the park from I-77 (Atando/LaSalle / Exit 12) and I-85 (N. Graham St. / Exit 40)



FOR MORE INFORMATION, CONTACT:

**ALEX HABECKER**

704.926.1412 (o) | 407.473.0051 (m) | [alex@beacondevelopment.com](mailto:alex@beacondevelopment.com)

500 East Morehead Street | Suite 200 | Charlotte, NC 28202

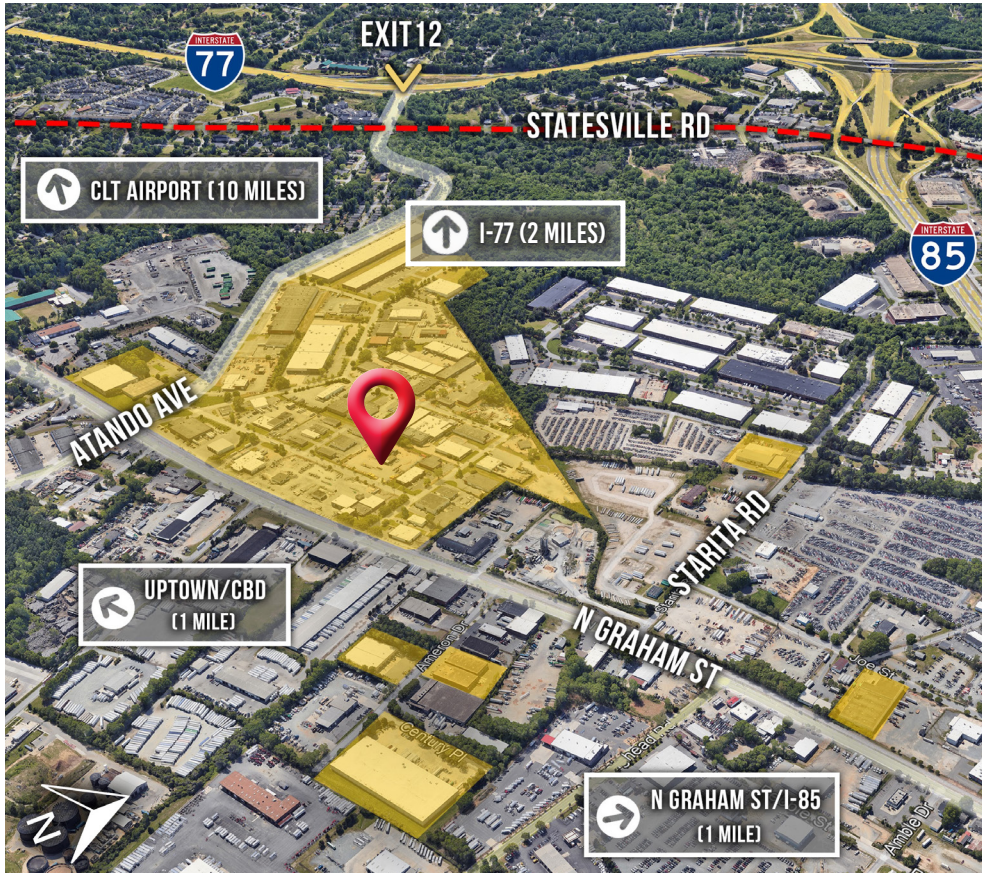
[www.beacondevelopment.com](http://www.beacondevelopment.com)



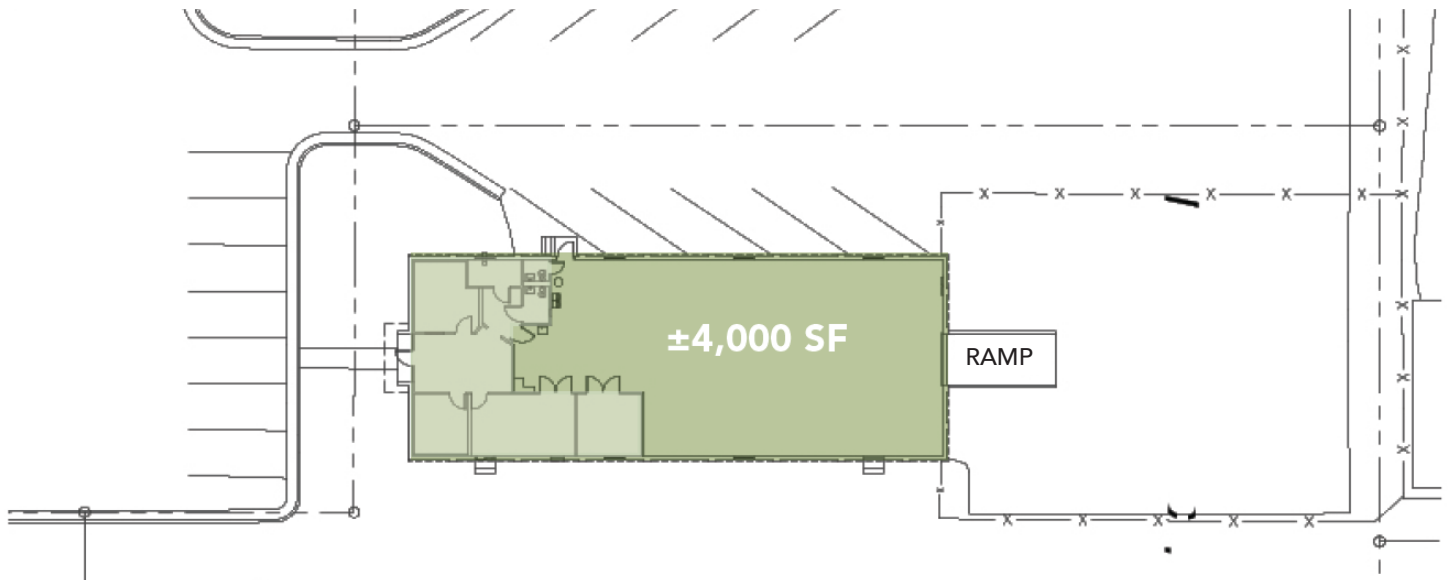


# ±4,000 SF SINGLE TENANT, WAREHOUSE IN CENTRAL CHARLOTTE

Atando Business Park | 1025 McClelland Court | Charlotte, NC 28206



## SITE PLAN



FOR MORE INFORMATION, CONTACT:

**ALEX HABECKER**

704.926.1412 (o) | 407.473.0051 (m) | [alex@beacondevelopment.com](mailto:alex@beacondevelopment.com)

500 East Morehead Street | Suite 200 | Charlotte, NC 28202

[www.beacondevelopment.com](http://www.beacondevelopment.com)

