

MOREHEAD CORPORATE PLAZA

1043 E MOREHEAD STREET | SUITES 300 | CHARLOTTE, NC 28204

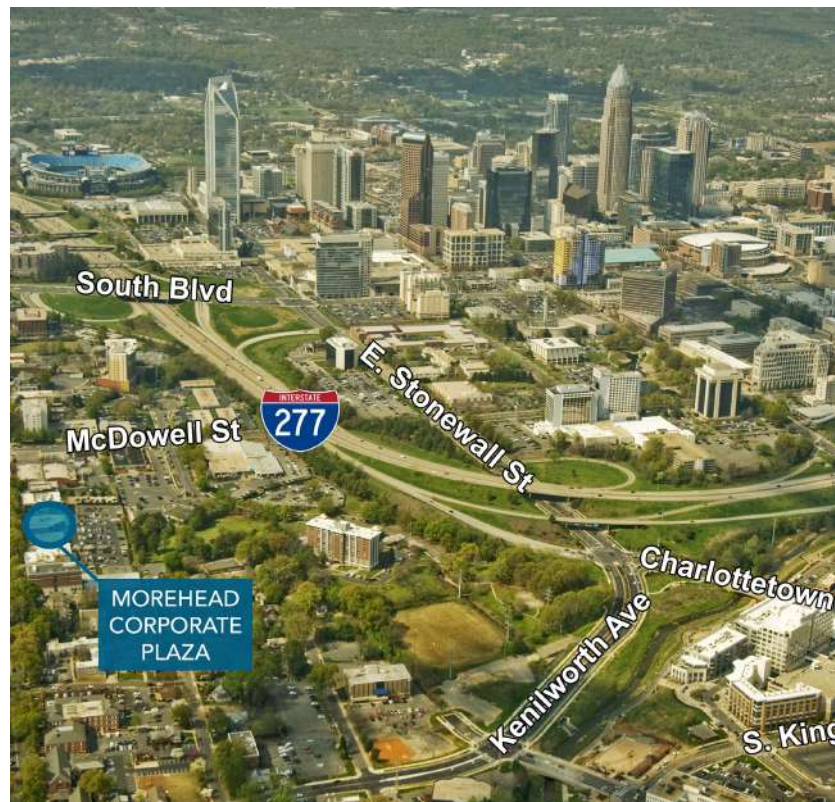


AVAILABLE FOR LEASE

5,471 SF

OFFICE SPACE IN MIDTOWN

- A premier three-story office building
- Corner suite
- Abundant free parking
- Less than 2 minutes from I-77, I-277 and Charlotte CBD
- Numerous amenities nearby including Dowd YMCA, the Metropolitan, The Little Sugar Creek Greenway and Atrium Health's Main Campus
- Restaurants such as, Joe and Nosh, Capishe, Dilworth Neighborhood Grille and Art's BBQ and Deli are all within walking distance
- Beacon Partners leases and manages over 1 million SF in Midtown and South End



FOR MORE INFORMATION, CONTACT:

ERIN SHAW
704.926.1414 (d) erin@beacondevelopment.com
500 East Morehead Street | Suite 200 | Charlotte, NC 28202
www.beacondevelopment.com

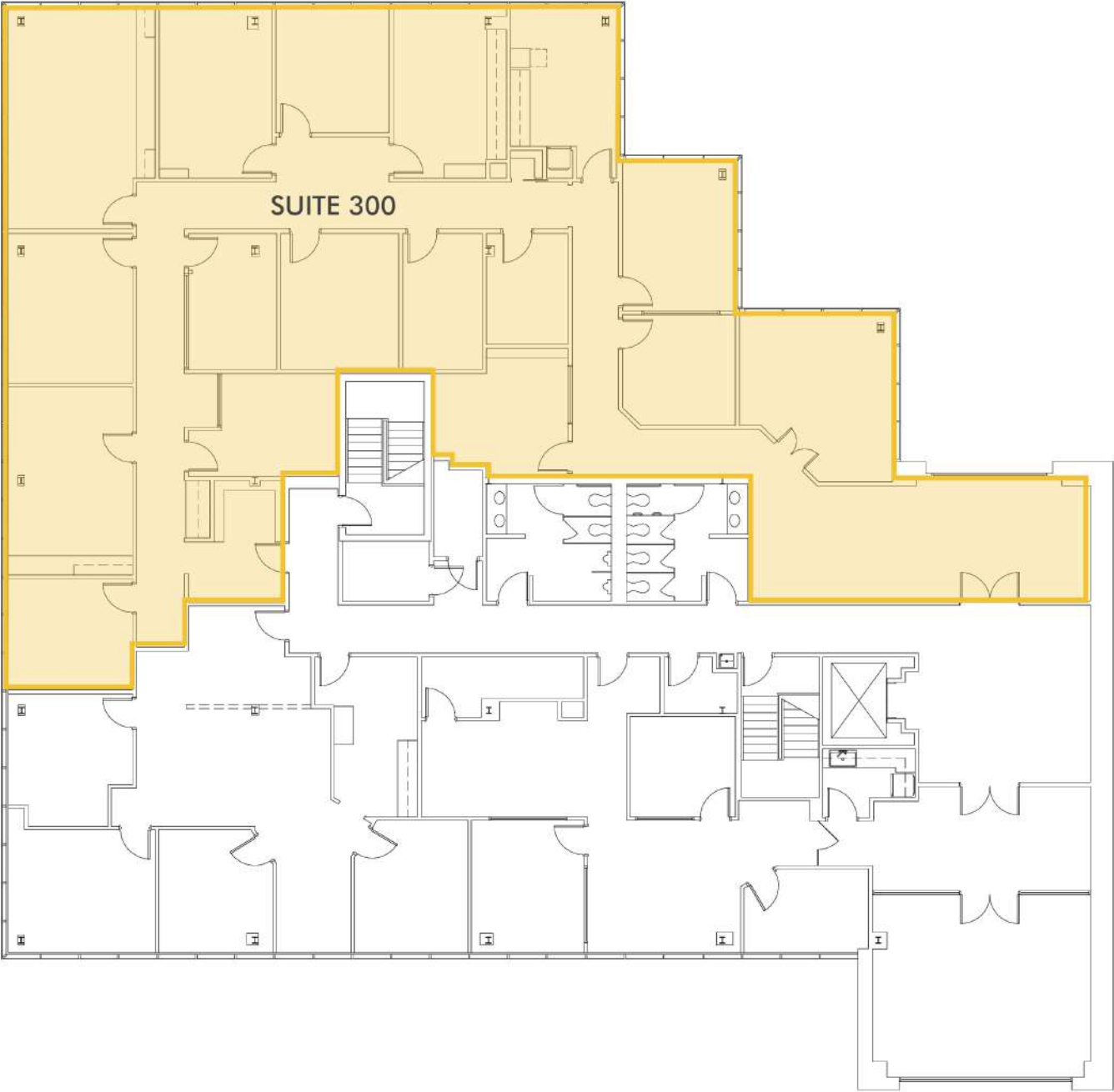
KRISTY VENNING
704.926.1409 (d) kristy@beacondevelopment.com
500 East Morehead Street | Suite 200 | Charlotte, NC 28202
www.beacondevelopment.com



MOREHEAD CORPORATE PLAZA

1043 E MOREHEAD STREET | SUITES 300 | CHARLOTTE, NC 28204

SUITE 300: 5,471 SF



FOR MORE INFORMATION, CONTACT:

ERIN SHAW
704.926.1414 (d) erin@beacondevelopment.com
500 East Morehead Street | Suite 200 | Charlotte, NC 28202
www.beacondevelopment.com

KRISTY VENNING
704.926.1409 (d) kristy@beacondevelopment.com
500 East Morehead Street | Suite 200 | Charlotte, NC 28202
www.beacondevelopment.com



All information regarding the property was obtained from sources deemed reliable but no warranty or representation is made of the accuracy thereof, and the property is subject to prior sale, lease or withdrawal.