

# MOREHEAD CORPORATE PLAZA

1043 E MOREHEAD STREET | SUITES 301 | CHARLOTTE, NC 28204

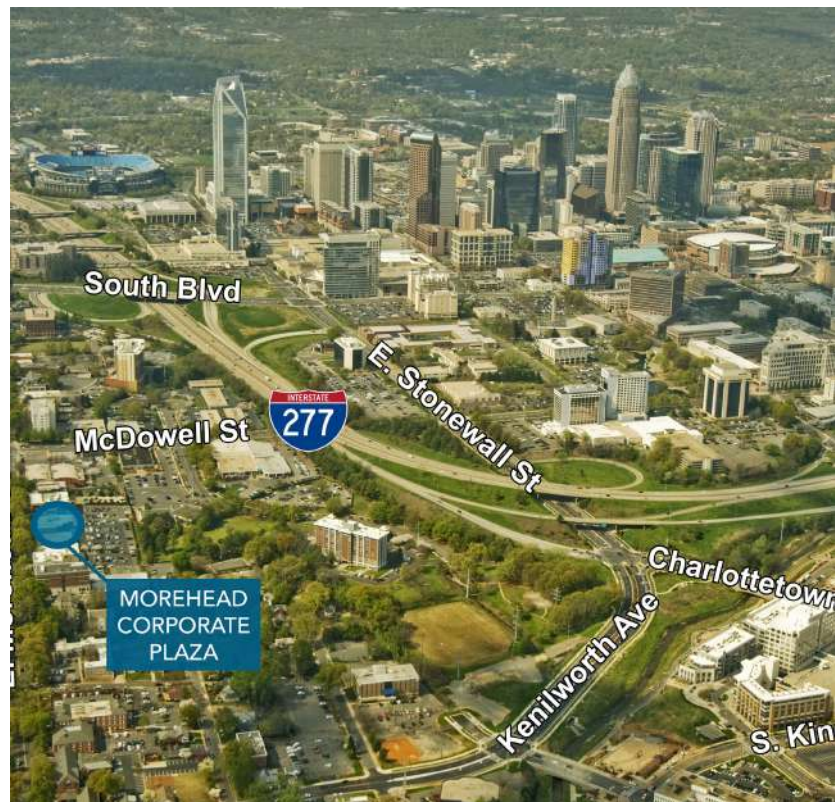


AVAILABLE FOR LEASE

## 2,151 SF

OFFICE SPACE IN MIDTOWN

- A premier three-story office building
- Corner suite
- Abundant free parking
- Less than 2 minutes from I-77, I-277 and Charlotte CBD
- Numerous amenities nearby including Dowd YMCA, the Metropolitan, The Little Sugar Creek Greenway and Atrium Health's Main Campus
- Restaurants such as, Joe and Nosh, Capishe, Dilworth Neighborhood Grille and Art's BBQ and Deli are all within walking distance
- Beacon Partners leases and manages over 1 million SF in Midtown and South End



FOR MORE INFORMATION, CONTACT:

**ERIN SHAW**  
704.926.1414 (d) [erin@beacondevelopment.com](mailto:erin@beacondevelopment.com)  
500 East Morehead Street | Suite 200 | Charlotte, NC 28202  
[www.beacondevelopment.com](http://www.beacondevelopment.com)

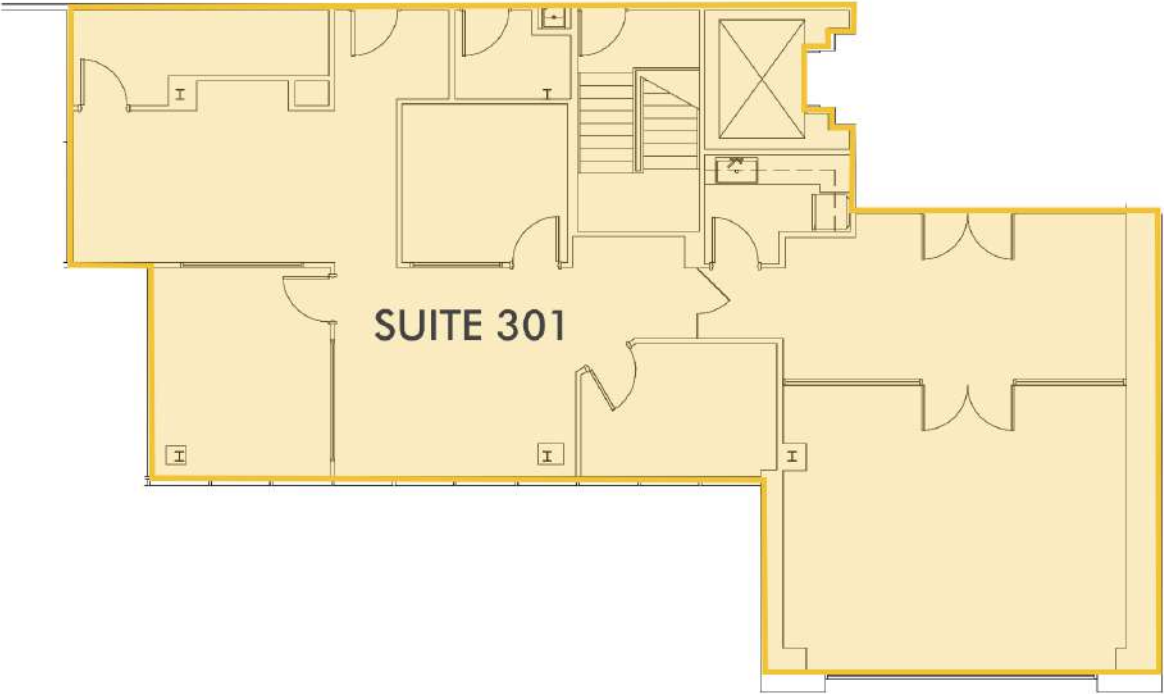
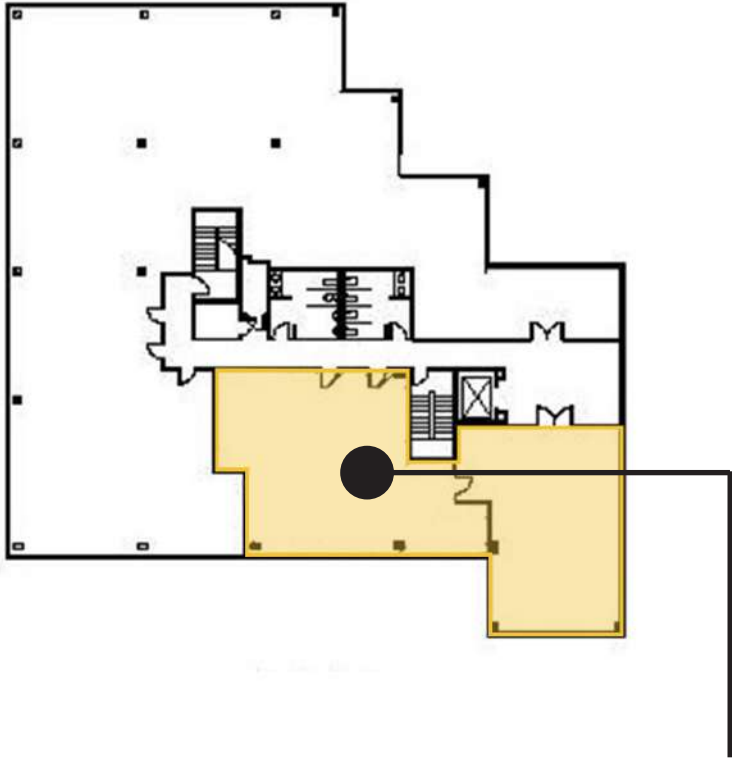
**KRISTY VENNING**  
704.926.1409 (d) [kristy@beacondevelopment.com](mailto:kristy@beacondevelopment.com)  
500 East Morehead Street | Suite 200 | Charlotte, NC 28202  
[www.beacondevelopment.com](http://www.beacondevelopment.com)



# MOREHEAD CORPORATE PLAZA

1043 E MOREHEAD STREET | SUITES 301 | CHARLOTTE, NC 28204

SUITE 301: 2,151 SF



FOR MORE INFORMATION, CONTACT:

**ERIN SHAW**  
704.926.1414 (d) [erin@beacondevelopment.com](mailto:erin@beacondevelopment.com)  
500 East Morehead Street | Suite 200 | Charlotte, NC 28202  
[www.beacondevelopment.com](http://www.beacondevelopment.com)

**KRISTY VENNING**  
704.926.1409 (d) [kristy@beacondevelopment.com](mailto:kristy@beacondevelopment.com)  
500 East Morehead Street | Suite 200 | Charlotte, NC 28202  
[www.beacondevelopment.com](http://www.beacondevelopment.com)



All information regarding the property was obtained from sources deemed reliable but no warranty or representation is made of the accuracy thereof, and the property is subject to prior sale, lease or withdrawal.