

# MOREHEAD CORPORATE PLAZA

1043 E MOREHEAD STREET | SUITES 110 | CHARLOTTE, NC 28204

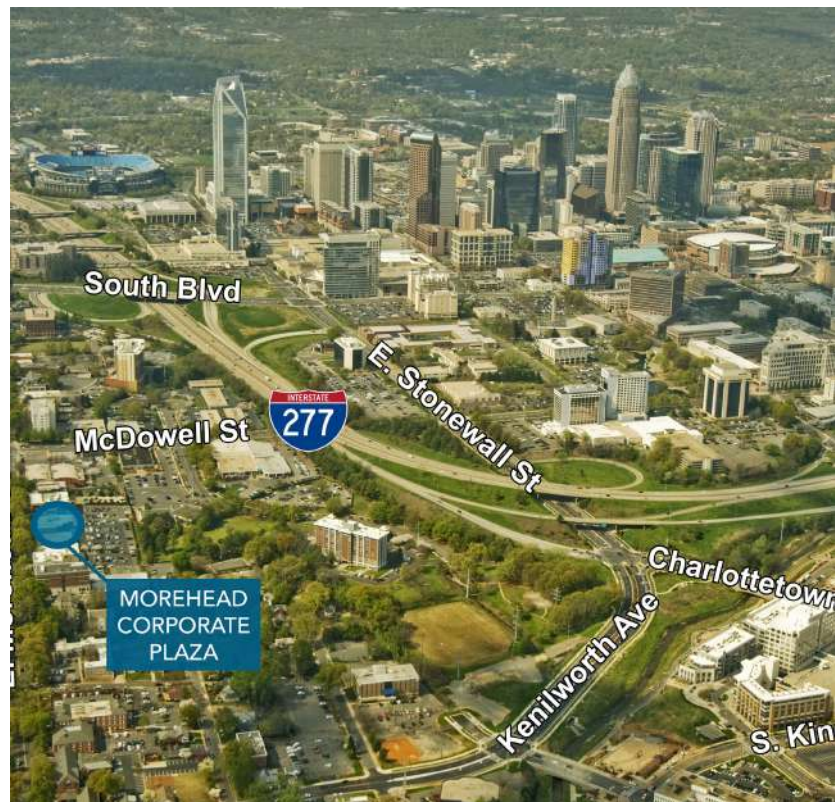


RENOVATED SPACE AVAILABLE FOR LEASE

## 5,126 SF

### FEATURES:

- A premier three-story office building
- Corner suite off first floor lobby; Move-in ready renovated space
- New double glass doors
- Renovated break room
- 8 offices, conference room, large bull pen
- Abundant free surface parking
- Less than 2 minutes from I-77, I-277 and Charlotte CBD, numerous amenities nearby in Midtown
- Beacon Partners leases and manages over 1 million SF in Midtown and South End



FOR MORE INFORMATION, CONTACT:

**KRISTY VENNING**

**704.926.1409 (d) [kristy@beacondevelopment.com](mailto:kristy@beacondevelopment.com)**

500 East Morehead Street | Suite 200 | Charlotte, NC 28202

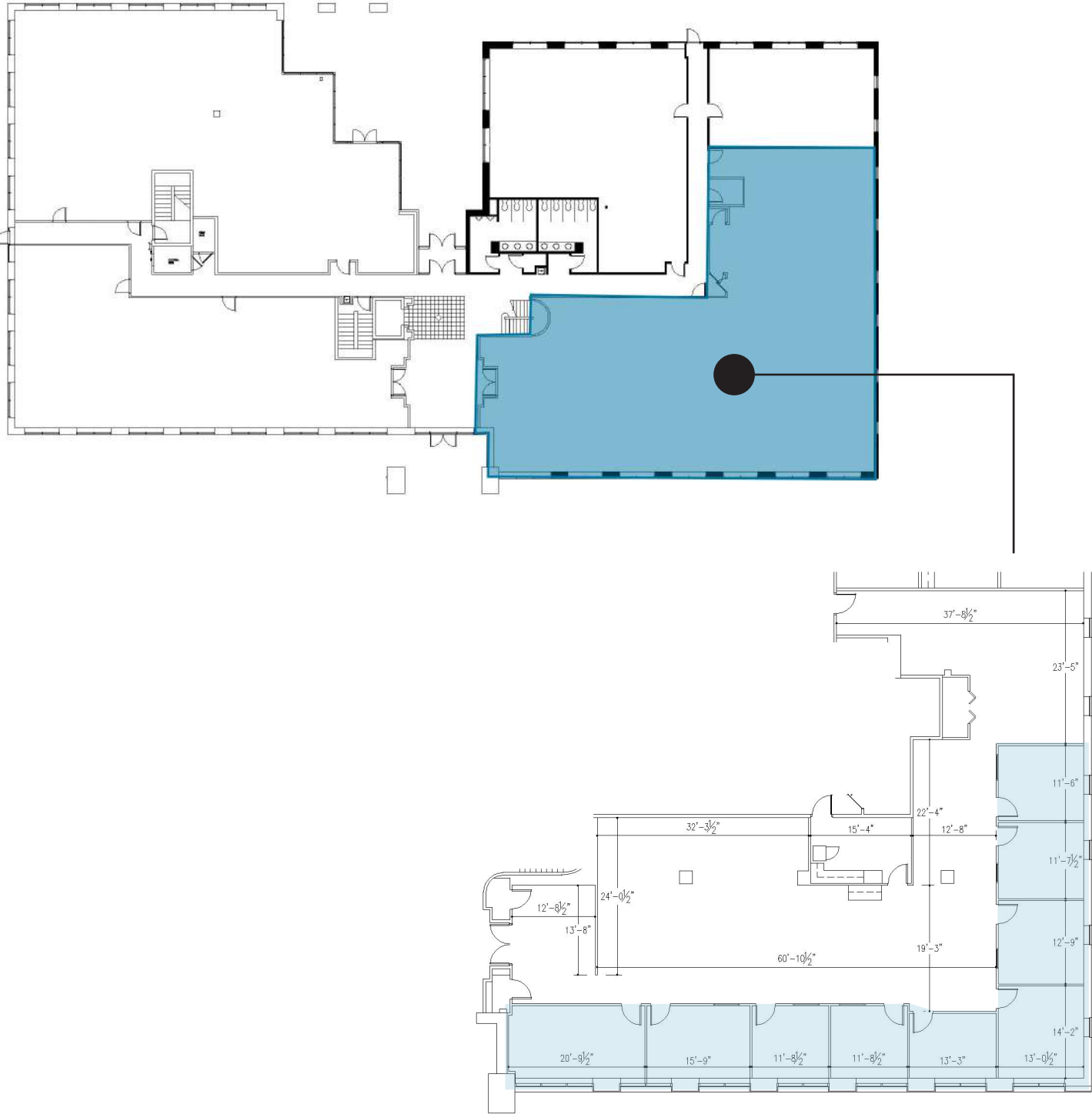
[www.beacondevelopment.com](http://www.beacondevelopment.com)



# MOREHEAD CORPORATE PLAZA

1043 E MOREHEAD STREET | SUITES 110 | CHARLOTTE, NC 28204

SUITE 110: 5,126 SF



FOR MORE INFORMATION, CONTACT:

**KRISTY VENNING**  
**704.926.1409 (d) [kristy@beacondevelopment.com](mailto:kristy@beacondevelopment.com)**  
500 East Morehead Street | Suite 200 | Charlotte, NC 28202  
[www.beacondevelopment.com](http://www.beacondevelopment.com)



All information regarding the property was obtained from sources deemed reliable but no warranty or representation is made of the accuracy thereof, and the property is subject to prior sale, lease or withdrawal.