

# MOREHEAD CORPORATE PLAZA

1043 E MOREHEAD STREET | SUITES 300 & 301 | CHARLOTTE, NC 28204

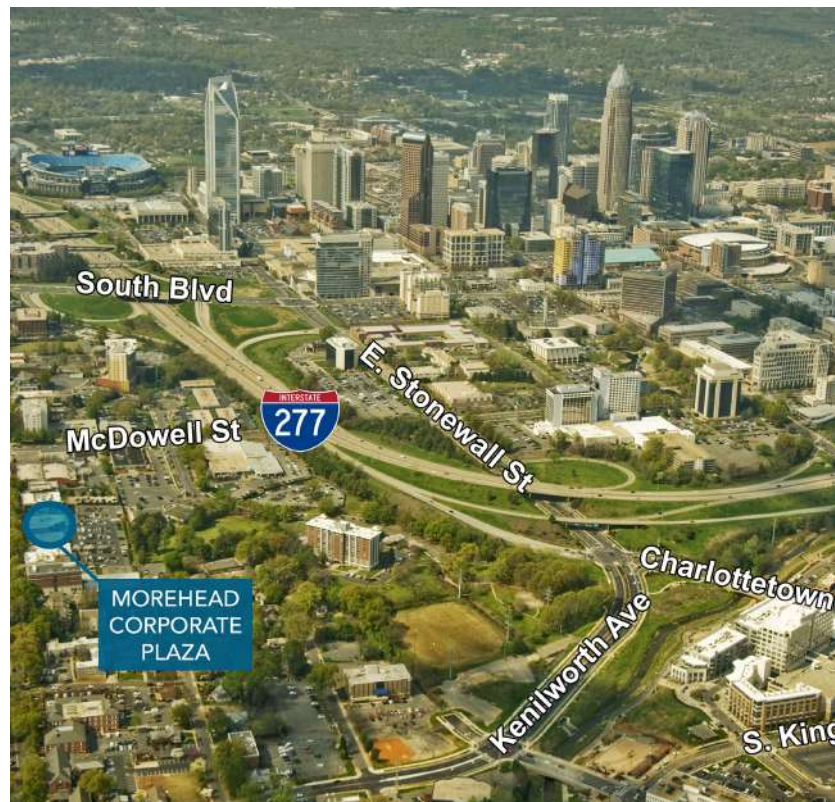


AVAILABLE FOR LEASE

**+/-2,151 - 7,622 SF**

OFFICE SPACE IN MIDTOWN

- A premier three-story office building
- Uptown Views
- Abundant free parking
- Less than 2 minutes from I-77, I-277 and Charlotte CBD
- Numerous amenities nearby including Dowd YMCA, the Metropolitan, The Little Sugar Creek Greenway and Atrium Health's Main Campus
- Restaurants such as, Joe and Nosh, Capishe, Dilworth Neighborhood Grille and Art's BBQ and Deli are all within walking distance
- Beacon Partners leases and manages over 1 million SF in Midtown and South End



FOR MORE INFORMATION, CONTACT:

**KRISTY VENNING**

**704.926.1409 (d) [kristy@beacondevelopment.com](mailto:kristy@beacondevelopment.com)**

500 East Morehead Street | Suite 200 | Charlotte, NC 28202

[www.beacondevelopment.com](http://www.beacondevelopment.com)

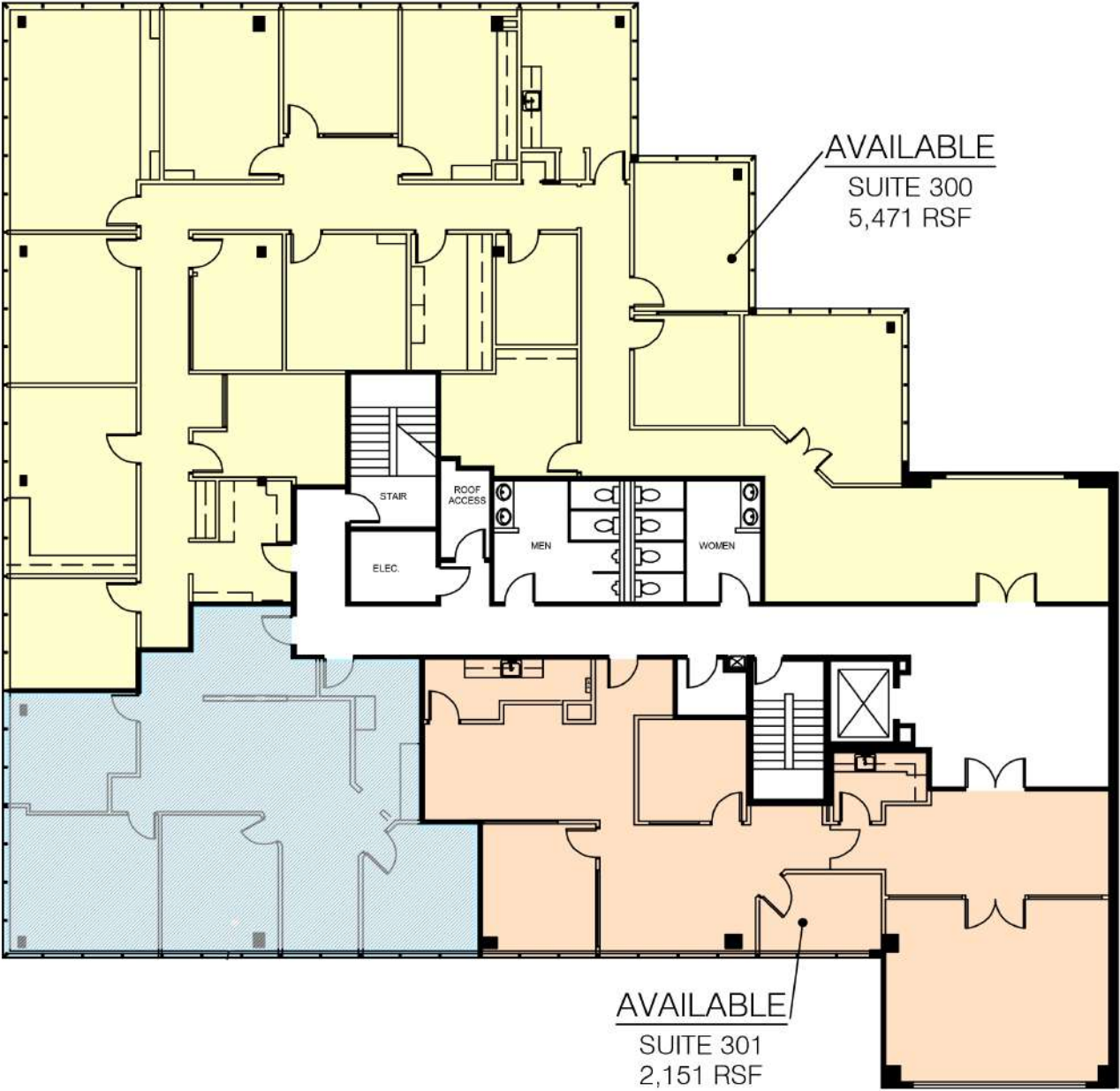


# MOREHEAD CORPORATE PLAZA

1043 E MOREHEAD STREET | SUITES 300 & 301 | CHARLOTTE, NC 28204

SUITES 300 & 301: +/-2,151 - 7,622 SF

## UPTOWN VIEWS



## MOREHEAD STREET

FOR MORE INFORMATION, CONTACT:

**KRISTY VENNING**  
704.926.1409 (d) [kristy@beacondevelopment.com](mailto:kristy@beacondevelopment.com)  
500 East Morehead Street | Suite 200 | Charlotte, NC 28202  
[www.beacondevelopment.com](http://www.beacondevelopment.com)



All information regarding the property was obtained from sources deemed reliable but no warranty or representation is made of the accuracy thereof, and the property is subject to prior sale, lease or withdrawal.