

OFFICE SPACE IN MIDTOWN

1051 E MOREHEAD STREET, SECOND FLOOR | CHARLOTTE, NC 28204



AVAILABLE FOR SUBLEASE

7,965 SF

OFFICE SPACE IN MIDTOWN

- Long term master lease — LED 2/28/2027
- Entire second floor
- “Plug and play” opportunity with furniture in place
- A premier two-story office building
- Abundant free surface parking
- Less than 2 minutes from I-77, I-277 and Charlotte CBD
- Numerous amenities nearby including Dowd YMCA, the Metropolitan, restaurants/retail, Art’s BBQ and Deli, The Little Sugar Creek Greenway & Atrium Health’s Main Campus
- Beacon Partners leases and manages over 1 million SF in the Midtown and South End areas



FOR MORE INFORMATION, CONTACT:

KRISTY VENNING

704.926.1409 (d) kristy@beacondevelopment.com

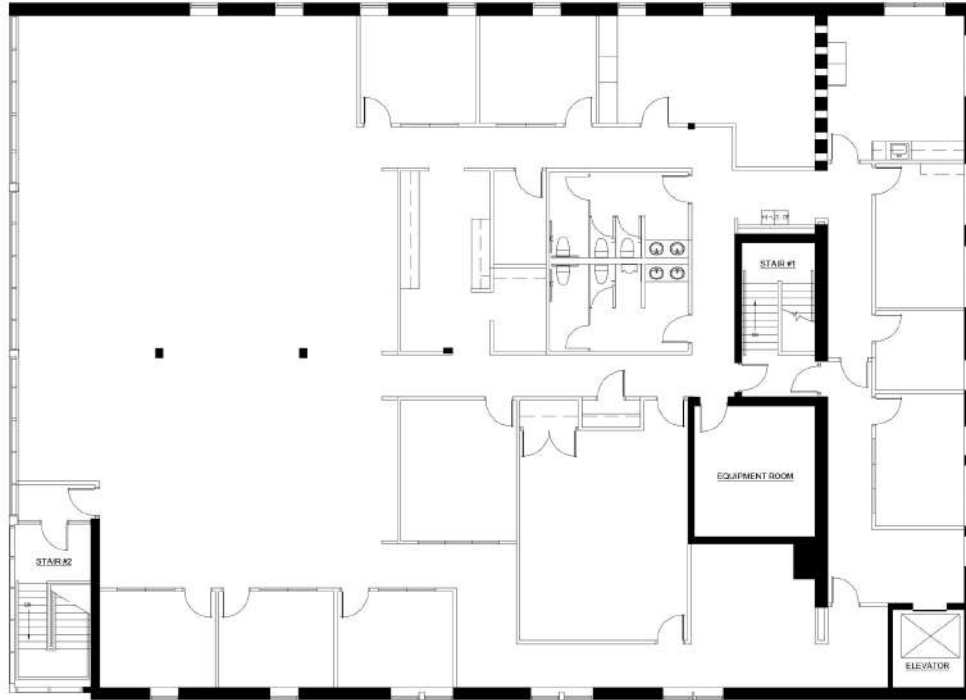
500 E. Morehead Street | Suite 200 | Charlotte, NC 28202 | beacondevelopment.com



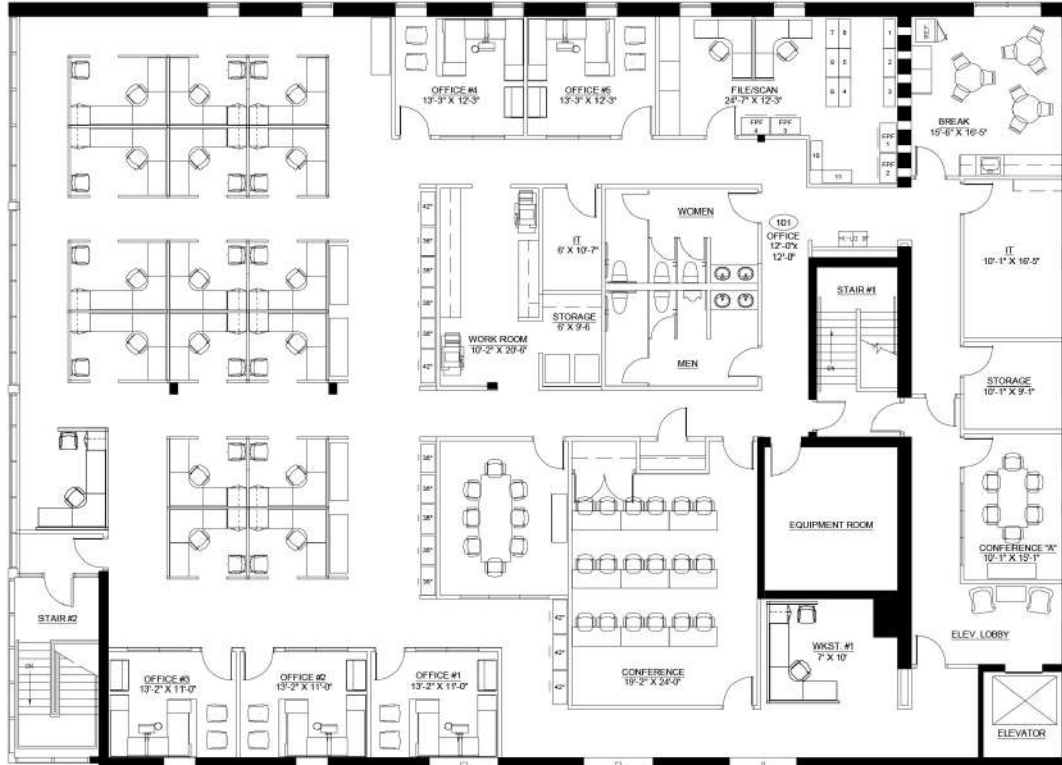
OFFICE SPACE IN MIDTOWN

1051 E MOREHEAD STREET, SECOND FLOOR | CHARLOTTE, NC 28204

FLOOR PLAN: 7,965 SF



FURNITURE IN PLACE AVAILABLE:



FOR MORE INFORMATION, CONTACT:

KRISTY VENNING

704.926.1409 (d) kristy@becondevelopment.com

500 E. Morehead Street | Suite 200 | Charlotte, NC 28202 | becondevelopment.com

