

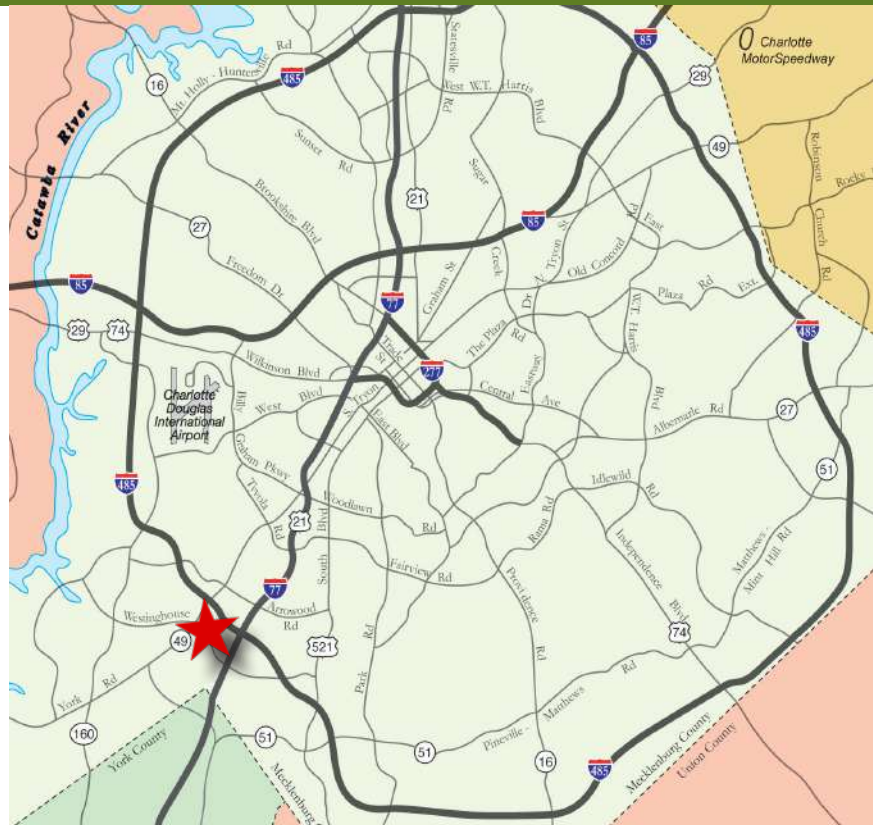
COMMERCE PARK | ±27,403 SF WAREHOUSE | FOR LEASE

10800 S. COMMERCE BOULEVARD, SUITE L | CHARLOTTE, NC 28273



FEATURES:

- ±27,403 SF front-load suite available
- ±1,978 SF office
- Easy access to Westinghouse Boulevard
- I-2 Zoning
- Wet sprinkler
- 20' ceiling height
- Five (5) 8 x 10 Dock High Doors
- One (1) 10 x 10 Drive In Door
- Convenient to I-77, I-485 and numerous amenities
- Located in Commerce Park, a master-planned institution quality park in Southwest Charlotte



FOR MORE INFORMATION, CONTACT:

TIM ROBERTSON

704.926.1405 (d) | 704.654.9880 (c)

tim.robertson@beacondevelopment.com

500 East Morehead Street | Suite 200 | Charlotte, NC 28202

JACK RIAZZI

704.926.1412 (d) | 336.608.2985 (c)

jack@beacondevelopment.com

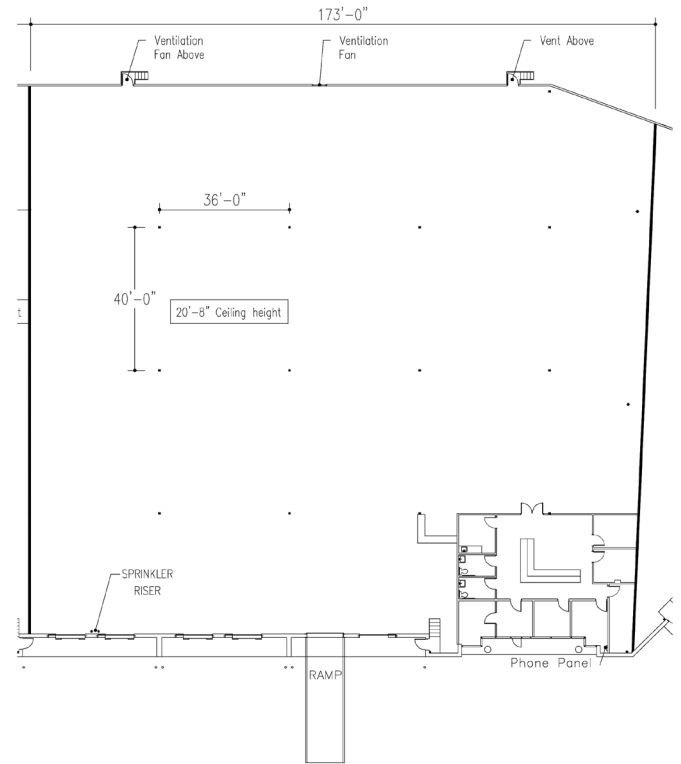
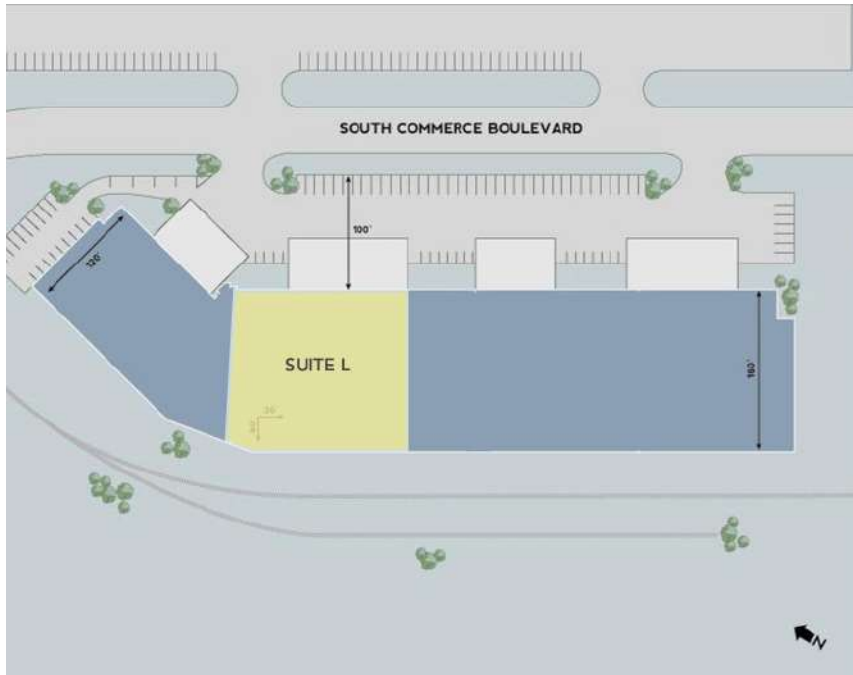
500 East Morehead Street | Suite 200 | Charlotte, NC 28202



COMMERCE PARK | ±27,403 SF WAREHOUSE | FOR LEASE

10800 S. COMMERCE BOULEVARD, SUITE L | CHARLOTTE, NC 28273

SITE & FLOOR PLAN:



AERIAL:



FOR MORE INFORMATION, CONTACT:

TIM ROBERTSON

704.926.1405 (d) | 704.654.9880 (c)

tim.robertson@beacondevelopment.com

500 East Morehead Street | Suite 200 | Charlotte, NC 28202

JACK RIAZZI

704.926.1412 (d) | 336.608.2985 (c)

jack@beacondevelopment.com

500 East Morehead Street | Suite 200 | Charlotte, NC 28202

