

# COMMERCE PARK | ±38,670 SF WAREHOUSE | FOR LEASE

10901 S. COMMERCE BOULEVARD, SUITE C | CHARLOTTE, NC 28273



## FEATURES:

- ±38,670 SF front load facility / ±1,354 SF office
- Rail served unit
- Easy access to Westinghouse Boulevard
- 20' ceiling height
- Three (10' x 10') rail doors
- Eight (8' x 10') dock high doors
- One (8' x 10') drive-in door
- I-2 zoning
- Wet sprinkler
- Brick on block construction
- Located in Commerce Park, a master-planned, institution quality park in Southwest Charlotte, convenient to I-77, I-485 and numerous amenities



## FOR MORE INFORMATION, CONTACT:

**BRITTEN MATHEWS**  
704.926.1412 (d) 804.363.3839 (m)  
[britten@beacondevelopment.com](mailto:britten@beacondevelopment.com)

500 East Morehead Street | Suite 200 | Charlotte, NC 28202  
[www.beacondevelopment.com](http://www.beacondevelopment.com)

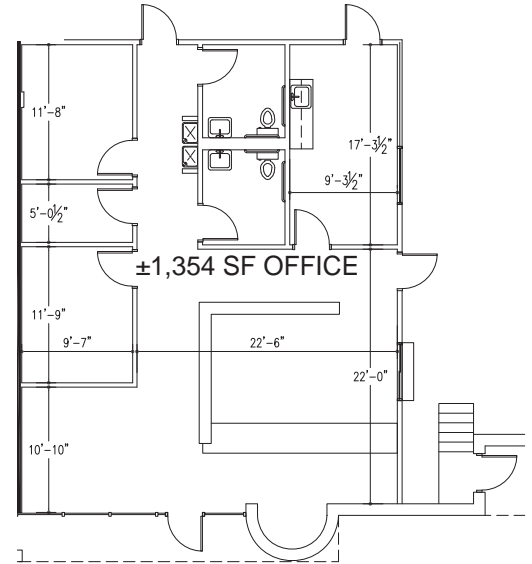
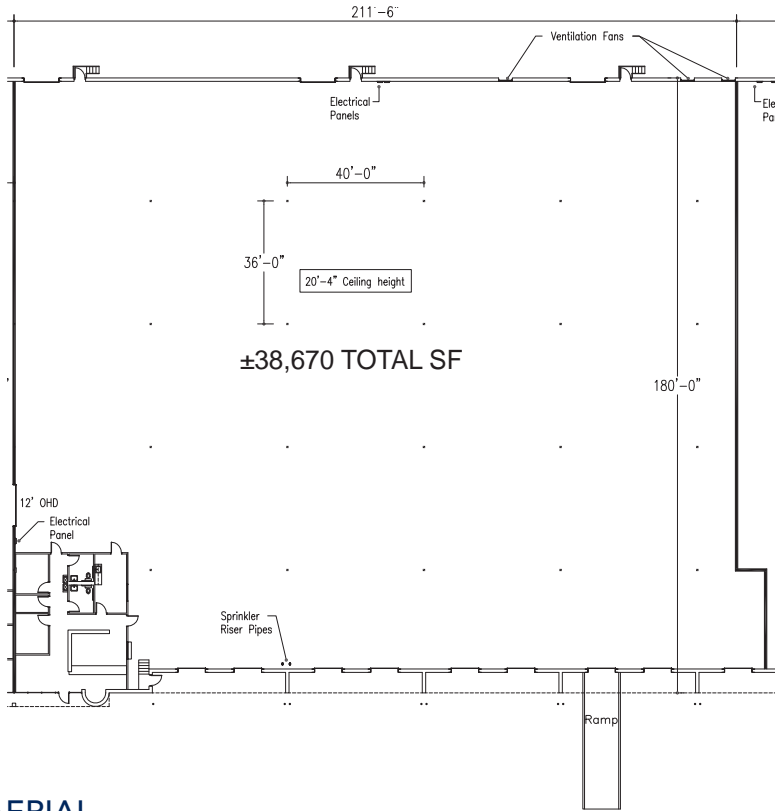


**BEACON  
PARTNERS**

# COMMERCE PARK | ±38,670 SF WAREHOUSE | FOR LEASE

10901 S. COMMERCE BOULEVARD, SUITE C | CHARLOTTE, NC 28273

## FLOOR PLAN



## AERIAL



FOR MORE INFORMATION, CONTACT:

**BRITTEN MATHEWS**

704.926.1412 (d) 804.363.3839 (m)

[britten@beacondevelopment.com](mailto:britten@beacondevelopment.com)

500 East Morehead Street | Suite 200 | Charlotte, NC 28202

[www.beacondevelopment.com](http://www.beacondevelopment.com)

