

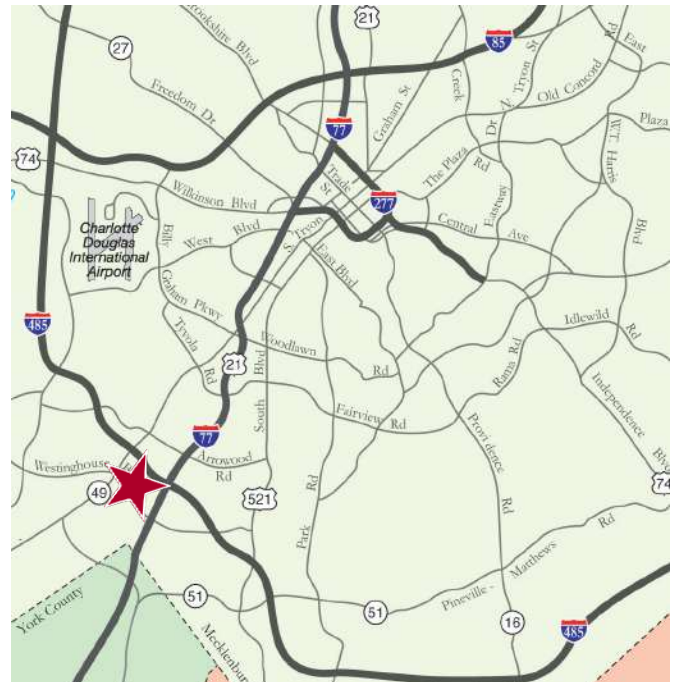
COMMERCE PARK | ±20,636 SF WAREHOUSE | FOR LEASE

11000 S COMMERCE BLVD, SUITE K | CHARLOTTE, NC 28273



FEATURES:

- ±20,636 SF front load, end cap unit
- ±2,986 SF of office space
- Easy access to Westinghouse Boulevard
- I-2 zoning
- Wet sprinkler
- 20' ceiling height
- Dock high and drive-in loading:
 - Two (8' x 10') dock high doors w/edge of dock levelers
 - One (8' x 10') dock high door
 - One (8' x 10') drive-in door
- Brick on block construction
- Convenient to I-77, I-485 and numerous amenities
- Located in Commerce Park, a master-planned, institutional-quality park in Southwest Charlotte



FOR MORE INFORMATION, CONTACT:

TIM ROBERTSON

704.926.1405 (d) 704.654.9880 (m)

tim.robertson@beacondevelopment.com

500 East Morehead Street | Suite 200 | Charlotte, NC 28202

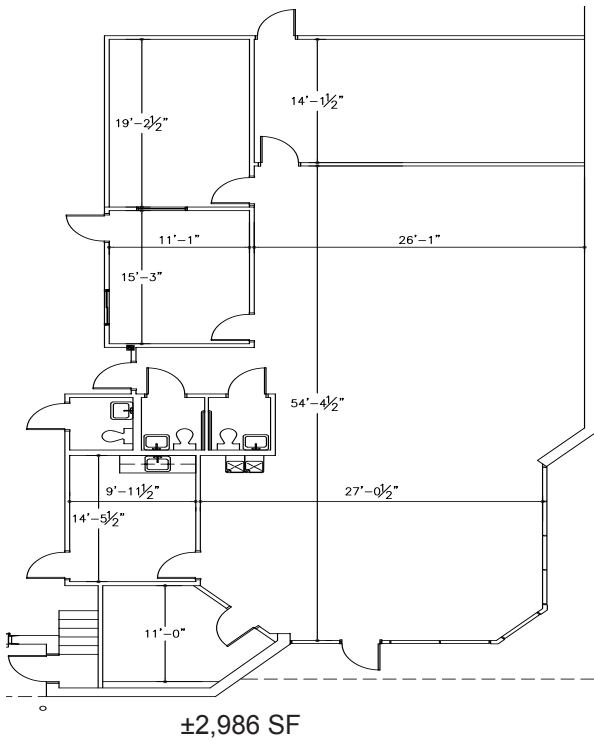
www.beacondevelopment.com



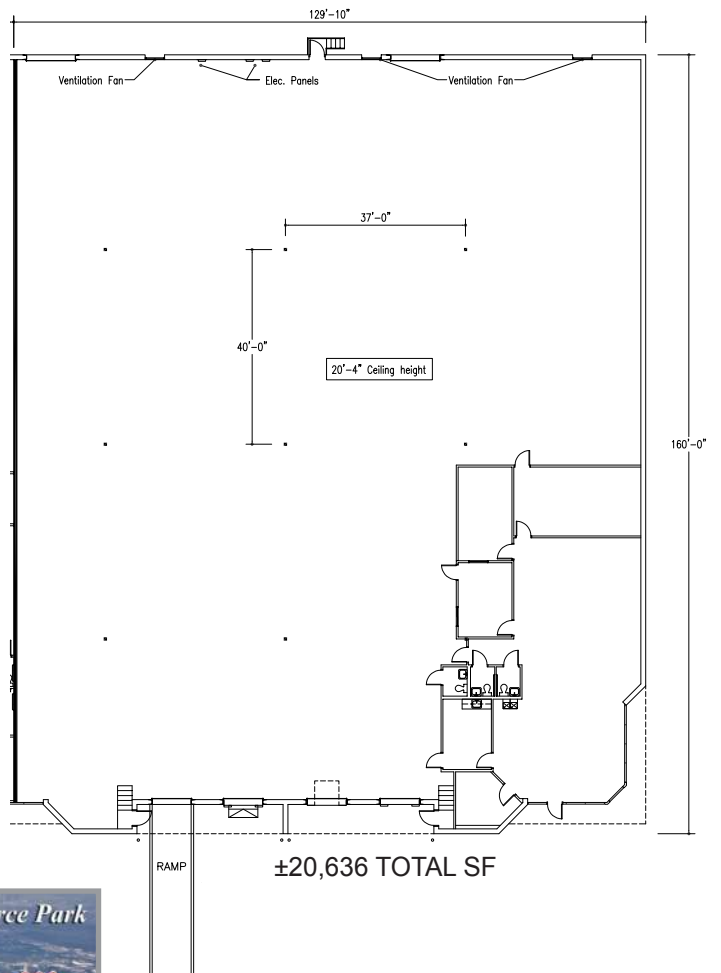
COMMERCE PARK | ±20,636 SF WAREHOUSE | FOR LEASE

11000 S COMMERCE BLVD, SUITE K | CHARLOTTE, NC 28273

OFFICE DIMENSIONS



SUITE FLOOR PLAN



AERIAL



FOR MORE INFORMATION, CONTACT:

TIM ROBERTSON

704.926.1405 (d) 704.654.9880 (m)

tim.robertson@beacondevelopment.com

500 East Morehead Street | Suite 200 | Charlotte, NC 28202

www.beacondevelopment.com

