

# 1200 UPPER ASBURY AVENUE-B

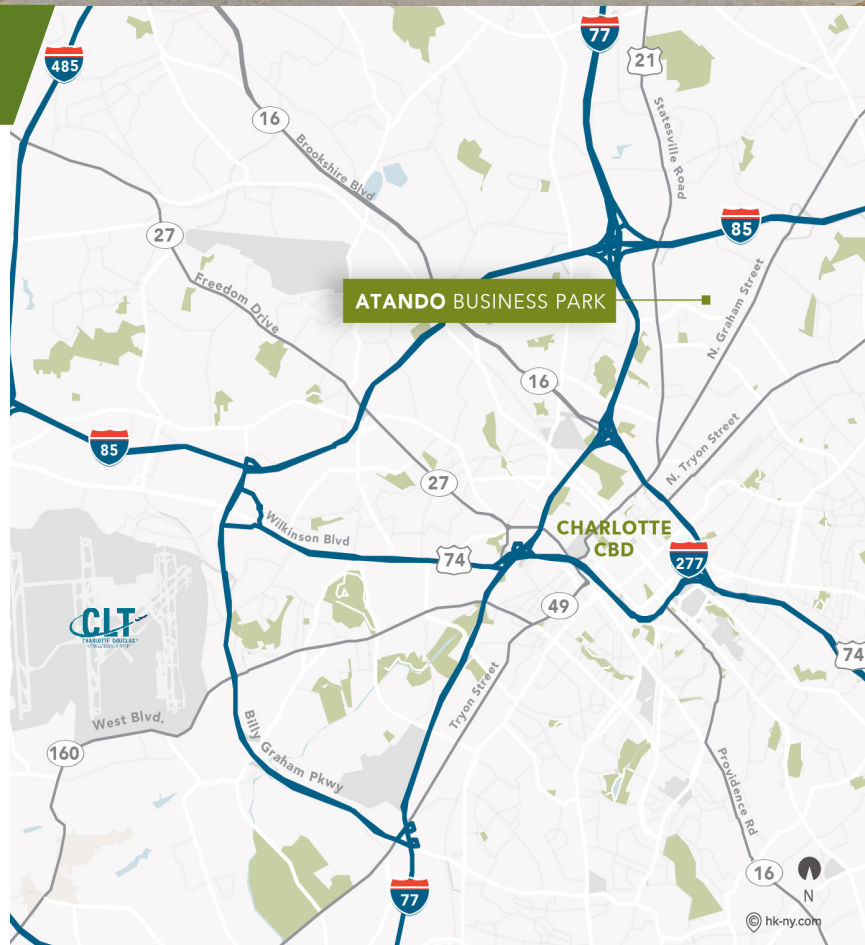
CHARLOTTE, NC 28206

ATANDO BUSINESS PARK | CENTRAL CHARLOTTE SUBMARKET



**±5,835 SF AVAILABLE FOR LEASE**

- Rear load facility
- ±1,250 SF of office space
- (1) 10' x 10' dock high doors
- 14'-4" clear height
- ML-2 Zoning
- Locally owned and managed professional park, with direct access from I-77 at Atando Ave/LaSalle St (Exit 12) and I-85 (Exit 40)
- Ideal Central Charlotte location:
  - ±0.5 miles to UPS facility
  - ±1.0 miles to I-85
  - ±2.0 miles to I-77
  - ±2.0 miles to Charlotte CBD

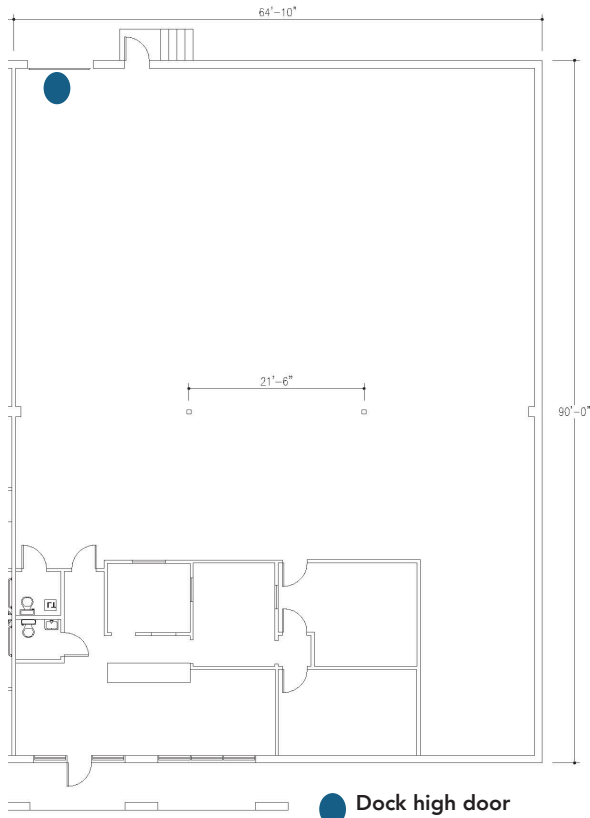




# 1200 UPPER ASBURY AVENUE-B

CHARLOTTE, NC 28206  
ATANDO BUSINESS PARK | CENTRAL CHARLOTTE SUBMARKET

## FLOOR & SITE PLAN



● Dock high door

