

COMMERCE PARK

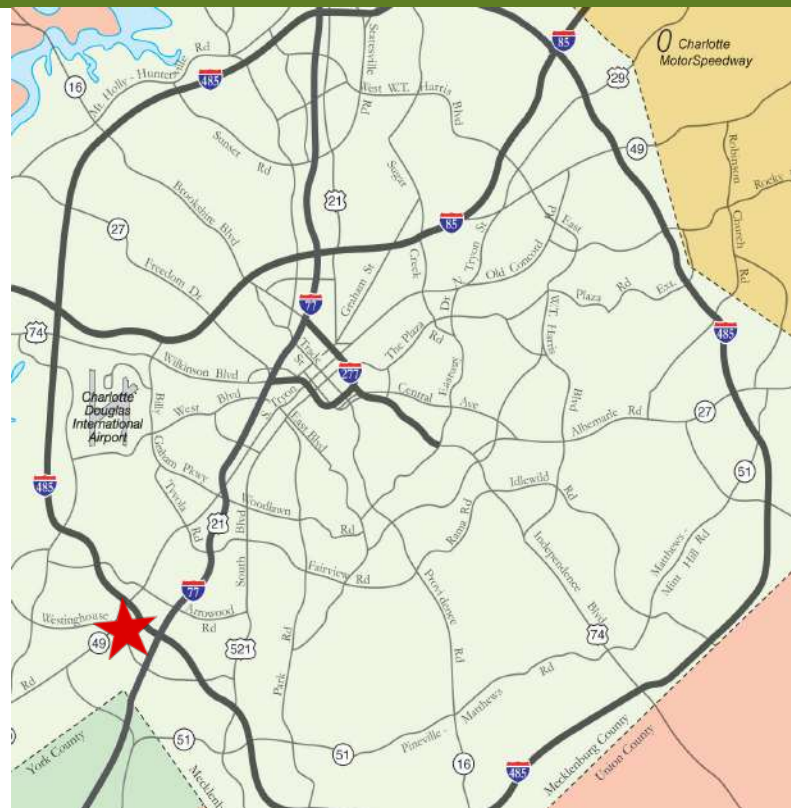
+/-27,240 SF WAREHOUSE | FOR LEASE

1200 WESTINGHOUSE BLVD, SUITE G | CHARLOTTE, NC 28273



FEATURES:

- ±27,240 SF front-load suite available
- ±2,186 SF office
- Visibility along Westinghouse Boulevard
- Wet sprinkler
- 20' ceiling height
- Four (4) 8 x 10 Dock High Doors
- One (1) 8 x 10 Drive In Door
- Convenient to I-77 and I-485
- Located in Commerce Park, a master-planned institution quality park in Southwest Charlotte



FOR MORE INFORMATION, CONTACT:

TIM ROBERTSON

704.926.1405 (d) 704.597.7757 (m)

tim.robertson@beacondevelopment.com

500 East Morehead Street | Suite 200 | Charlotte, NC 28202

www.beacondevelopment.com



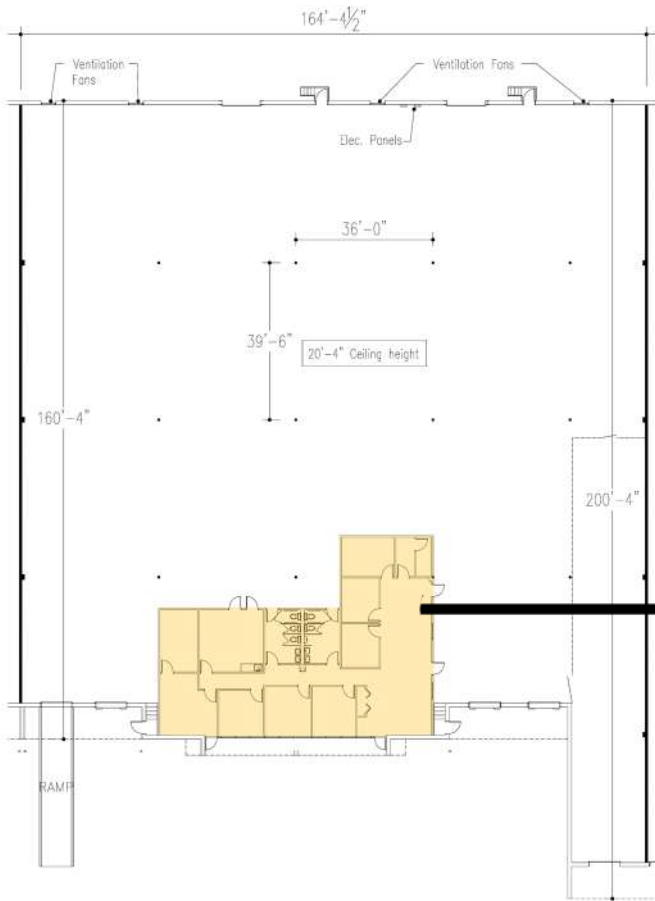
**BEACON
PARTNERS**

COMMERCE PARK

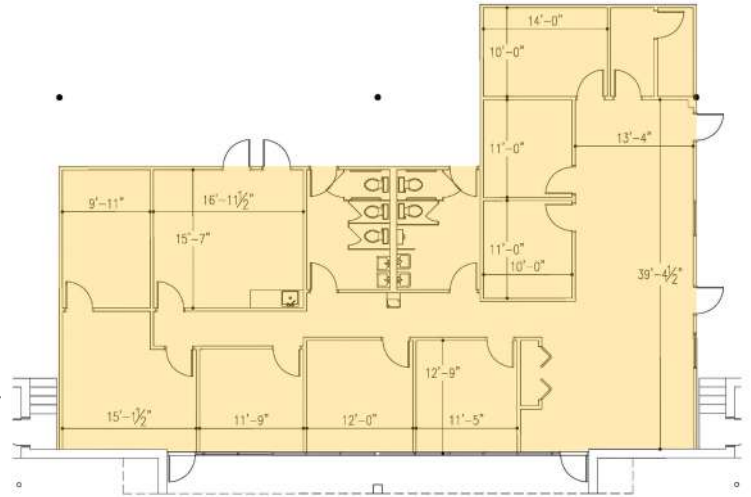
+/-27,240 SF WAREHOUSE | FOR LEASE

1200 WESTINGHOUSE BLVD, SUITE G | CHARLOTTE, NC 28273

FLOOR PLAN:



OFFICE PLAN:



SITE PLAN:



FOR MORE INFORMATION, CONTACT:

TIM ROBERTSON

704.926.1405 (d) 704.597.7757 (m)

tim.robertson@beacondevelopment.com

500 East Morehead Street | Suite 200 | Charlotte, NC 28202

www.beacondevelopment.com



**BEACON
PARTNERS**