

±5,100 SF WAREHOUSE FOR LEASE | CENTRAL CHARLOTTE

ATANDO BUSINESS PARK | 1220 UPPER ASBURY AVENUE, SUITE B | CHARLOTTE, NC 28206



FEATURES:

- ±5,100 SF warehouse facility
- 0.25 acres of secured outdoor storage
- ±832 SF of office space
- One 8' x 10' Dock High Door
- One 10' x 10' Drive-In Door
- The entrance from I-77 at Atando/LaSalle (Exit 12), offers direct access into the park
- Professional park environment
- Ideal Central Charlotte location:
 - ±1.0 mile UPS facility
 - ±1.3 miles to I-77
 - ±2.0 miles to I-85
 - ±3.5 miles to Charlotte's Central Business District
 - ±10 miles to Charlotte Douglas International Airport



FOR MORE INFORMATION, CONTACT:

ALEX HABECKER

704.926.1412 (o) | 407.473.0051 (m) | alex@beacondevelopment.com

500 East Morehead Street | Suite 200 | Charlotte, NC 28202

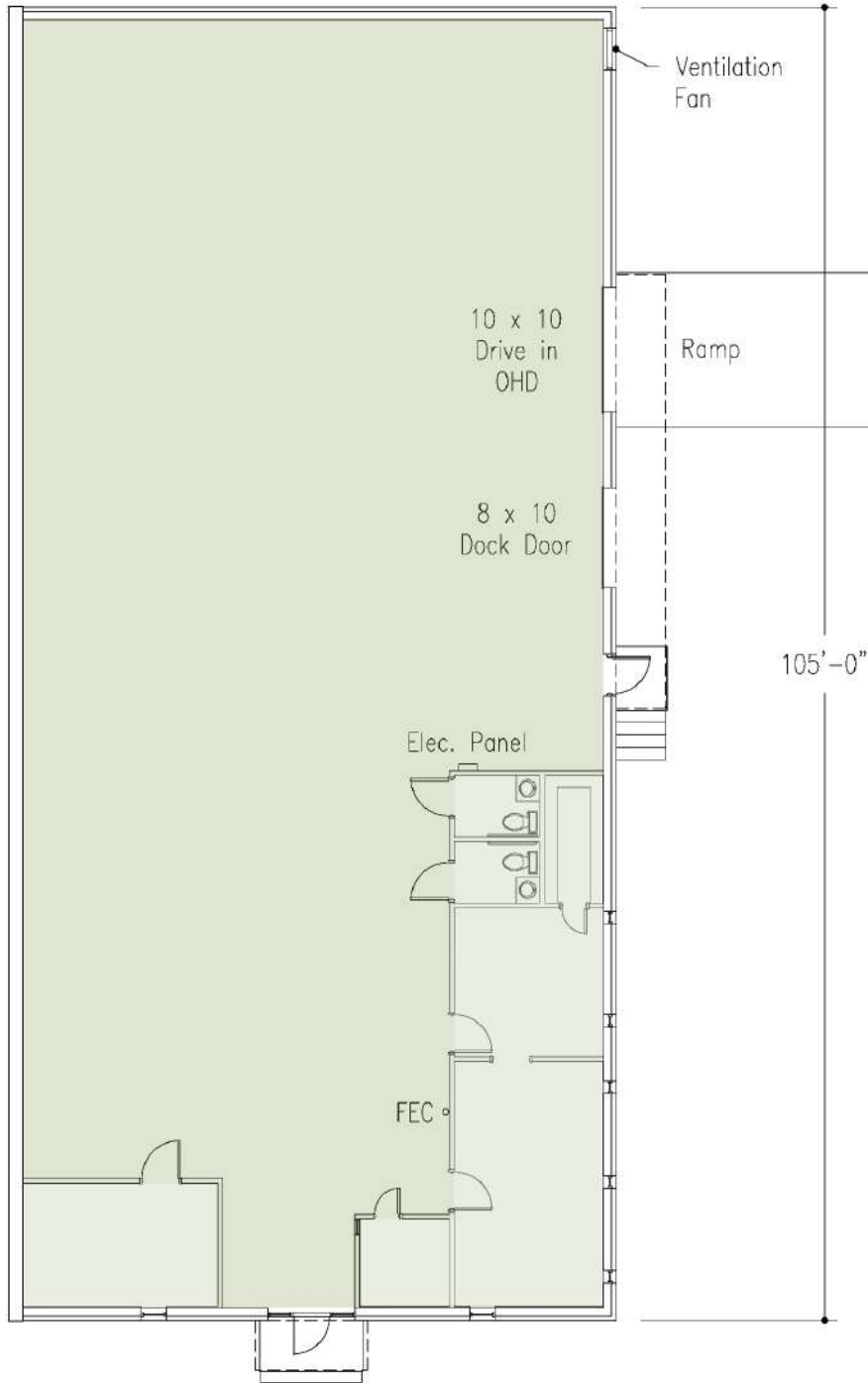
www.beacondevelopment.com



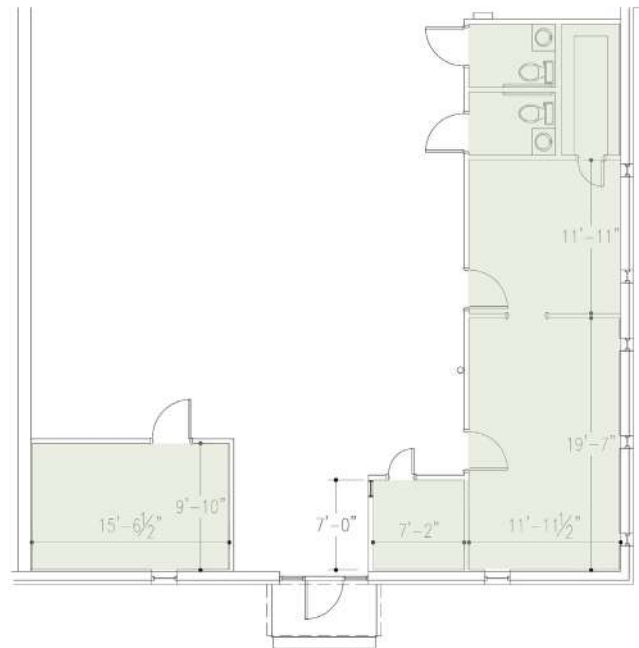
±5,100 SF WAREHOUSE FOR LEASE | CENTRAL CHARLOTTE

ATANDO BUSINESS PARK | 1220 UPPER ASBURY AVENUE, SUITE B | CHARLOTTE, NC 28206

FLOOR PLAN:



OFFICE PLAN:



FOR MORE INFORMATION, CONTACT:

ALEX HABECKER

704.926.1412 (o) | 407.473.0051 (m) | alex@beacondevelopment.com

500 East Morehead Street | Suite 200 | Charlotte, NC 28202

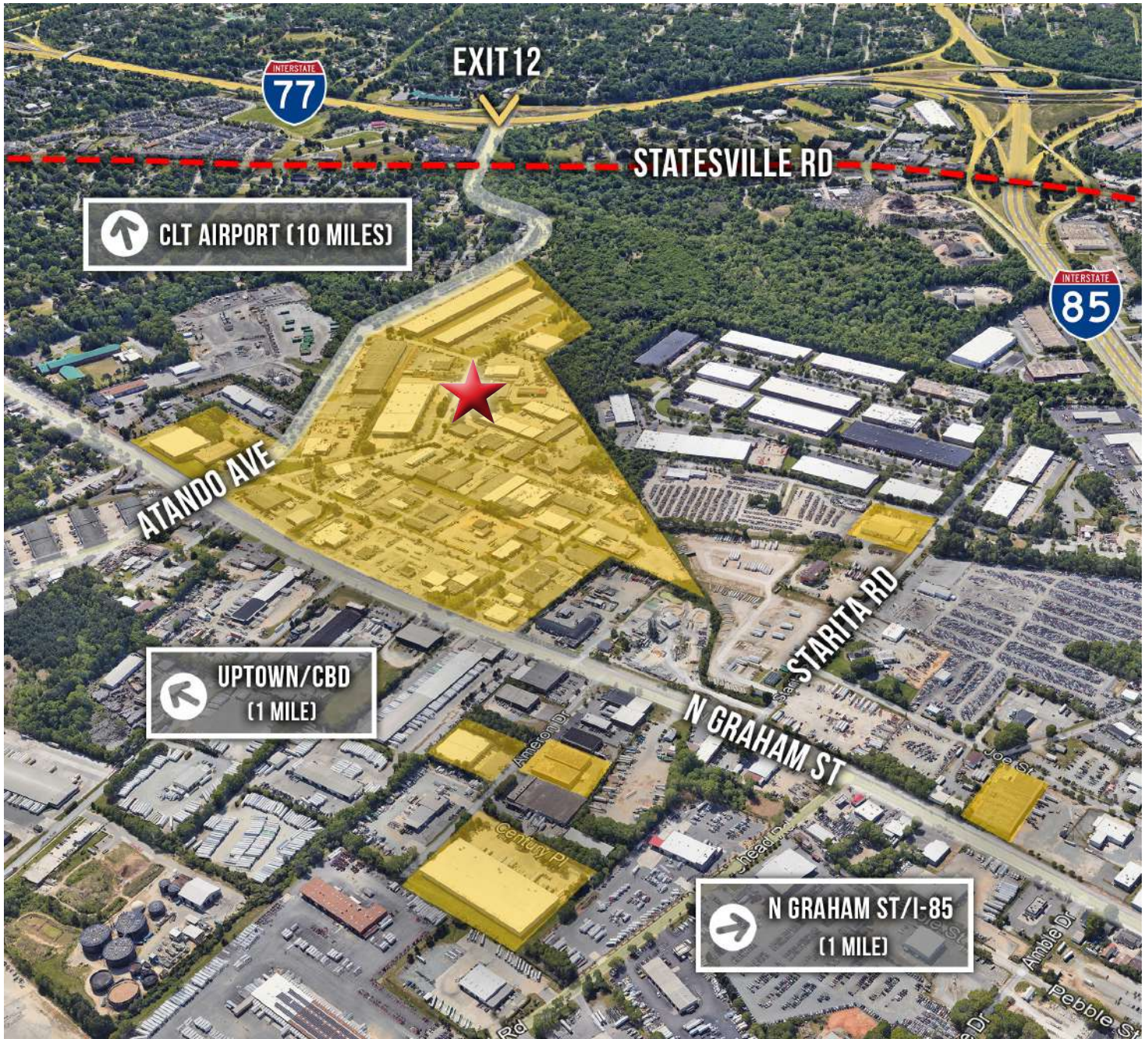
www.beacondevelopment.com



±5,100 SF WAREHOUSE FOR LEASE | CENTRAL CHARLOTTE

ATANDO BUSINESS PARK | 1220 UPPER ASBURY AVENUE, SUITE B | CHARLOTTE, NC 28206

PARK AERIAL:



FOR MORE INFORMATION, CONTACT:

ALEX HABECKER

704.926.1412 (o) | 407.473.0051 (m) | alex@beacondevelopment.com

500 East Morehead Street | Suite 200 | Charlotte, NC 28202

www.beacondevelopment.com

