

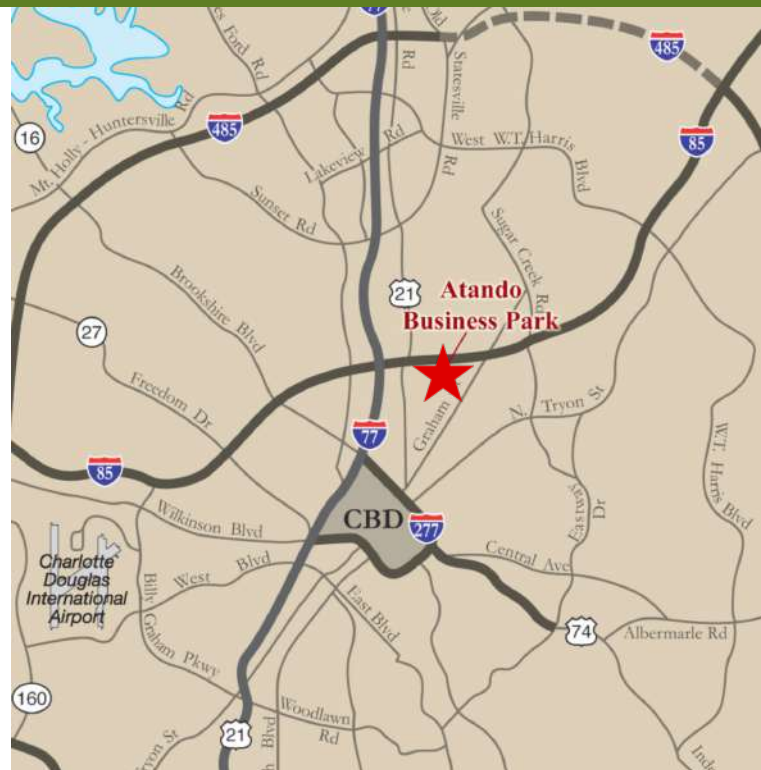
# ±20,160 SF WAREHOUSE FOR LEASE | CENTRAL CHARLOTTE

ATANDO BUSINESS PARK | 1240 UPPER ASBURY AVE | CHARLOTTE, NC 28206



## FEATURES :

- ±4.1 acre lot with fenced outdoor storage
- I-2 Zoning
- ±20,160 SF single tenant warehouse facility with ±5,824 SF office
- Two (2) 9' x 10' Dock High Doors
- Four (4) 12' x 14' Drive-In Doors
- Heavy Power
- Built in 2007
- 18' clear height
- Locally owned and managed professional park, with direct access from I-77 at Atando Ave/LaSalle St (Exit 12) and I-85 (Exit 40)



FOR MORE INFORMATION, CONTACT:

**JACK RIAZZI**

704.926.1412 | [jack@beacondevelopment.com](mailto:jack@beacondevelopment.com)

500 E. Morehead Street, Suite 200 | Charlotte, NC 28202

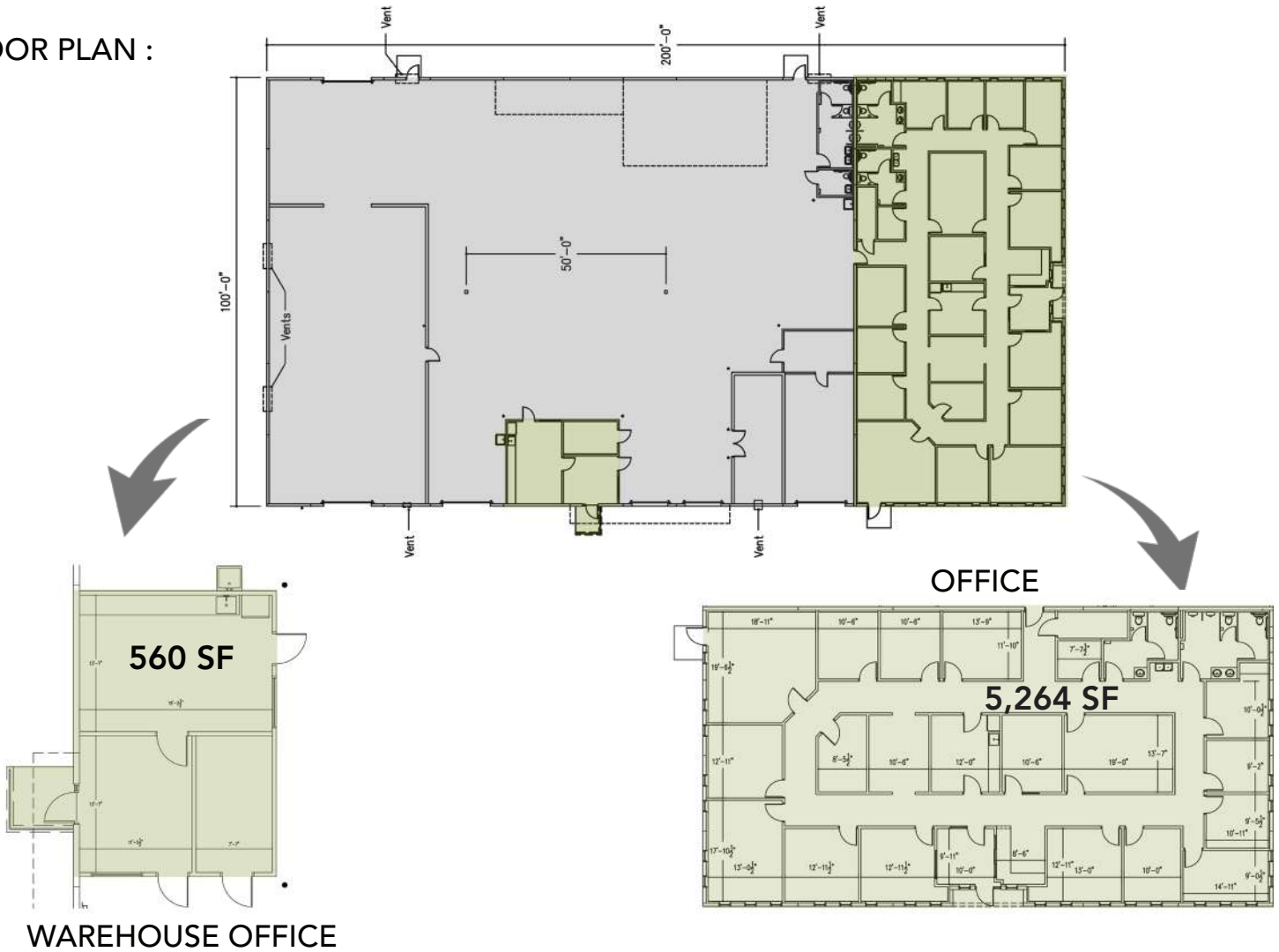
[www.beacondevelopment.com](http://www.beacondevelopment.com)



# +20,160 SF WAREHOUSE FOR LEASE | CENTRAL CHARLOTTE

ATANDO BUSINESS PARK | 1240 UPPER ASBURY AVE | CHARLOTTE, NC 28206

FLOOR PLAN :



FOR MORE INFORMATION, CONTACT:

**JACK RIAZZI**

704.926.1412 | [jack@beacondevelopment.com](mailto:jack@beacondevelopment.com)

500 E. Morehead Street, Suite 200 | Charlotte, NC 28202

[www.beacondevelopment.com](http://www.beacondevelopment.com)

