

1303 UPPER ASBURY AVENUE

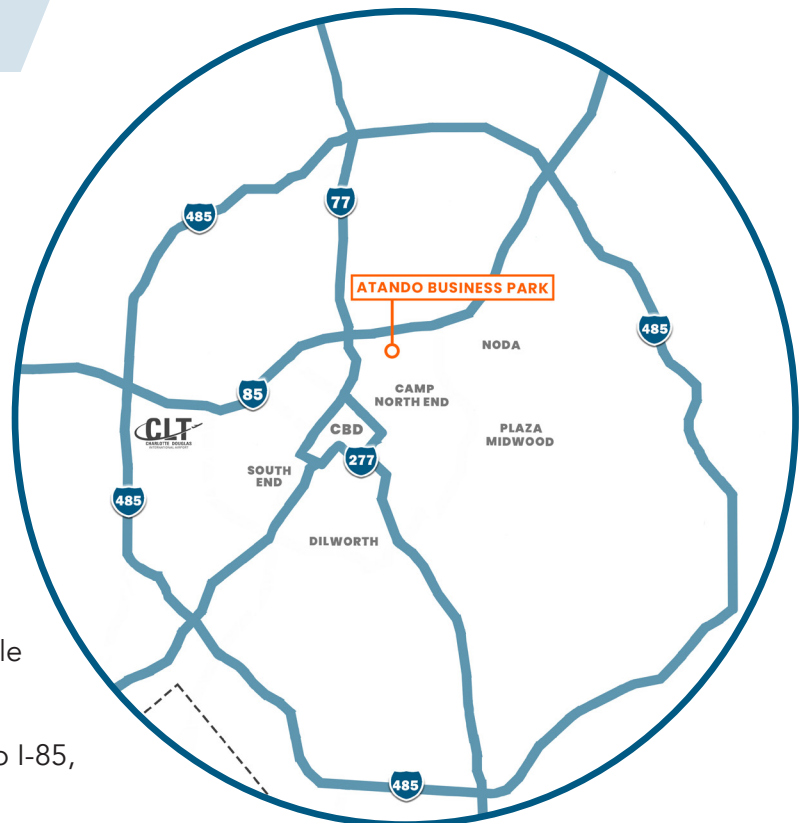
CHARLOTTE, NC | 28206

ATANDO BUSINESS PARK | CENTRAL CHARLOTTE SUBMARKET



±10,200 SF AVAILABLE FOR LEASE

- ±10,200 SF warehouse facility
- ±1,398 SF of office space
- Front load building; truck court 130'
- Potential outside storage
- Wet sprinkler
- Two (2) dock high doors
- 19' clear height
- Building signage opportunity
- Direct access to the park from I-77 at Atando/LaSalle (Exit 12)
- Central Charlotte location with immediate access to I-85, I-77, the CBD and a UPS facility



ALEX HABECKER

704.926.1412 (o) 407.473.0051 (m)
alex@beacondevelopment.com

1303 UPPER ASBURY AVENUE

CHARLOTTE, NC | 28206

ATANDO BUSINESS PARK | CENTRAL CHARLOTTE SUBMARKET

FLOOR PLAN & AERIAL

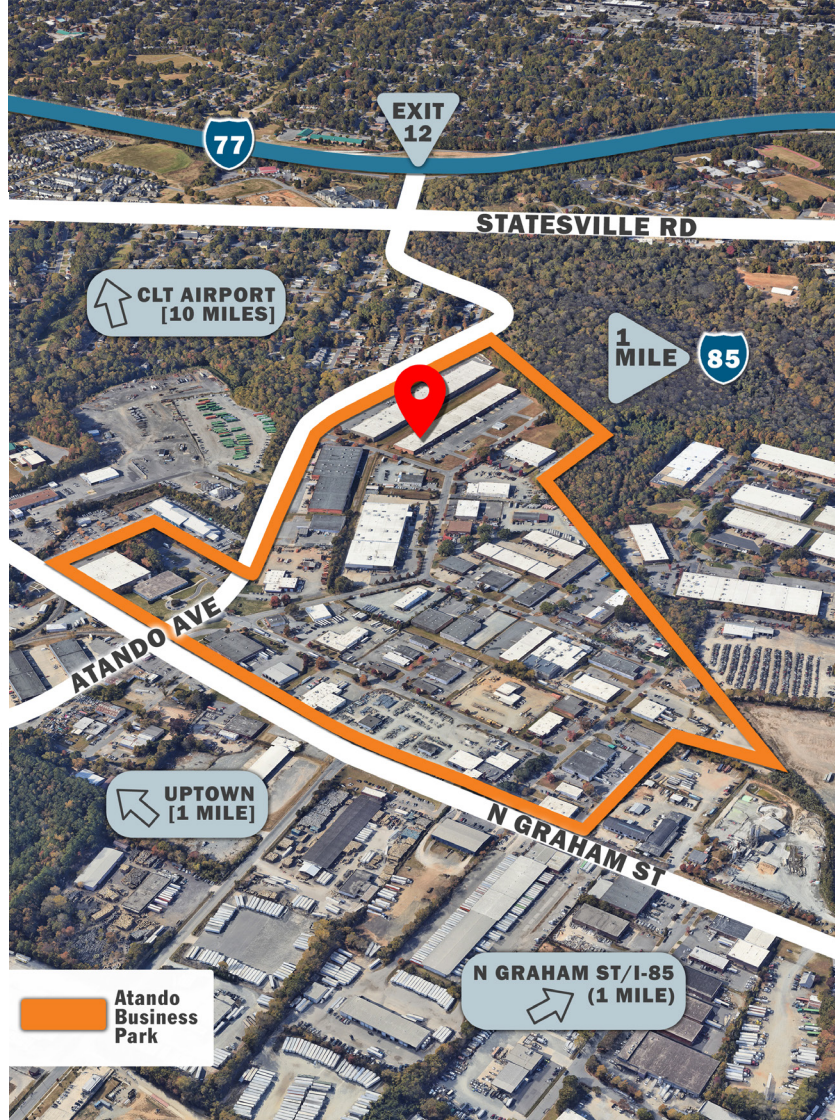
● = Dock high door

80'-1"

126'-0"

11'-11"

14'-11"



ALEX HABECKER

704.926.1412 (o) 407.473.0051 (m)

alex@beacondevelopment.com

