

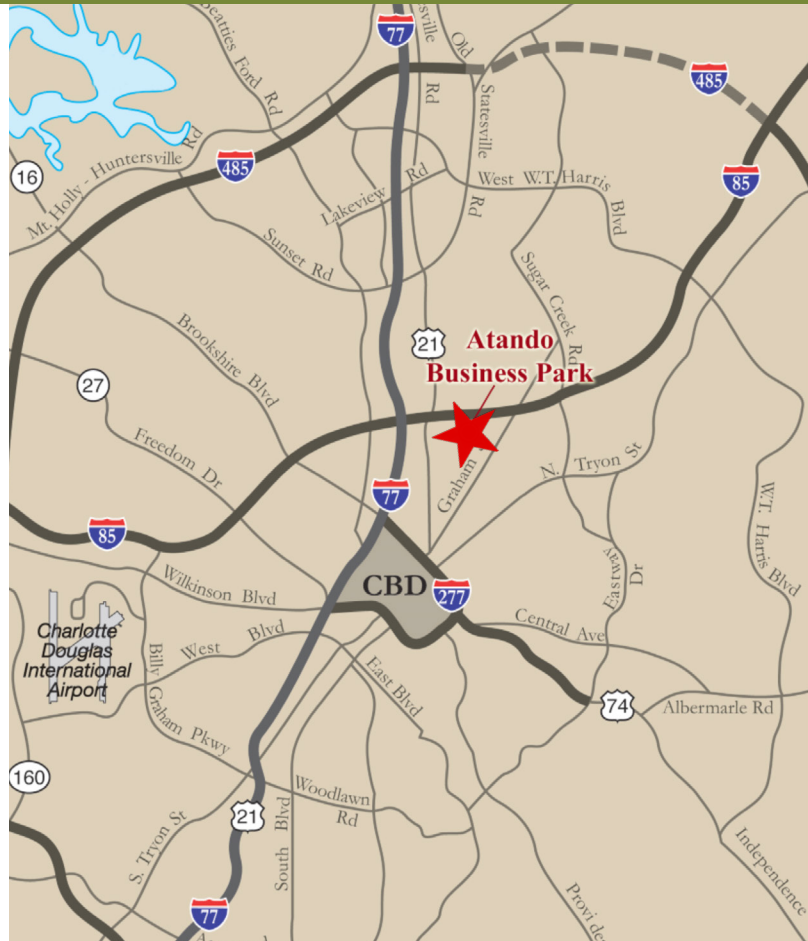
# ±18,281 SF WAREHOUSE FOR LEASE | CENTRAL CHARLOTTE

ATANDO BUSINESS PARK | 1310 ATANDO AVENUE | CHARLOTTE, NC 28206



## FEATURES:

- 18,281 SF front load warehouse facility
- 2,142 SF of office space
- End cap unit
- Three (3) Dock High Doors
- 30' x 40' column spacing
- 22' clear height
- Wet sprinkler
- Precast concrete building
- Professional park environment
- Direct access to I-77 at Atando/LaSalle (Exit 12)
- Central Charlotte location with immediate access to I-85, I-77, CBD and UPS facility



## FOR MORE INFORMATION, CONTACT:

### PETE KIDWELL

704.926.1404 (o) | 704.654.9343 (m)

[kidwell@beacondevelopment.com](mailto:kidwell@beacondevelopment.com)

500 East Morehead Street | Suite 200 | Charlotte, NC 28202

[www.beacondevelopment.com](http://www.beacondevelopment.com)

### ALEX HABECKER

704.926.1412 (o) | 407.473.0051 (m)

[alex@beacondevelopment.com](mailto:alex@beacondevelopment.com)

500 East Morehead Street | Suite 200 | Charlotte, NC 28202

[www.beacondevelopment.com](http://www.beacondevelopment.com)

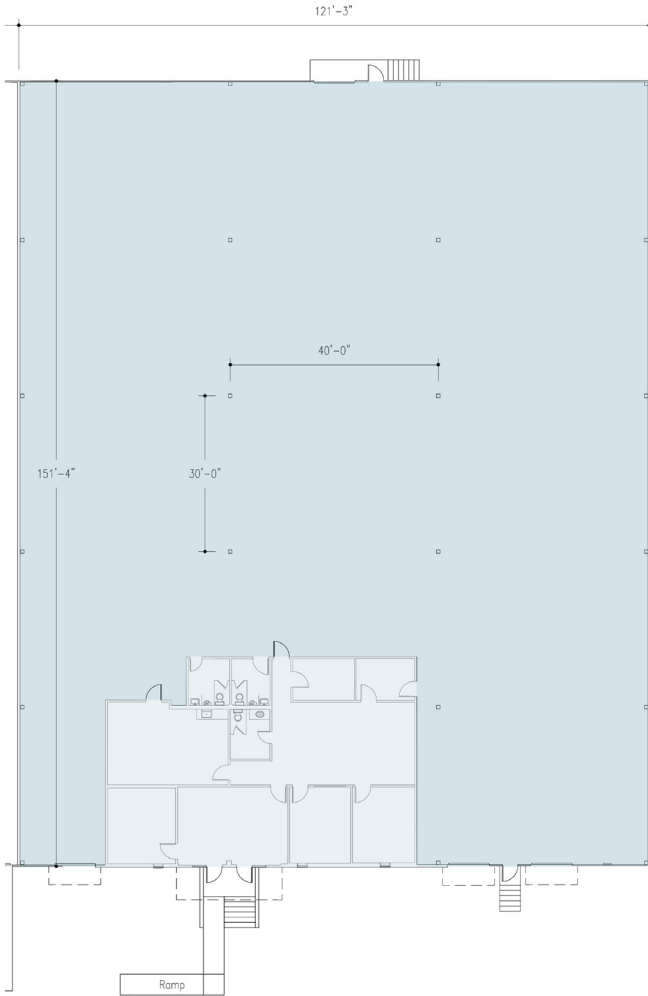


**BEACON  
PARTNERS**

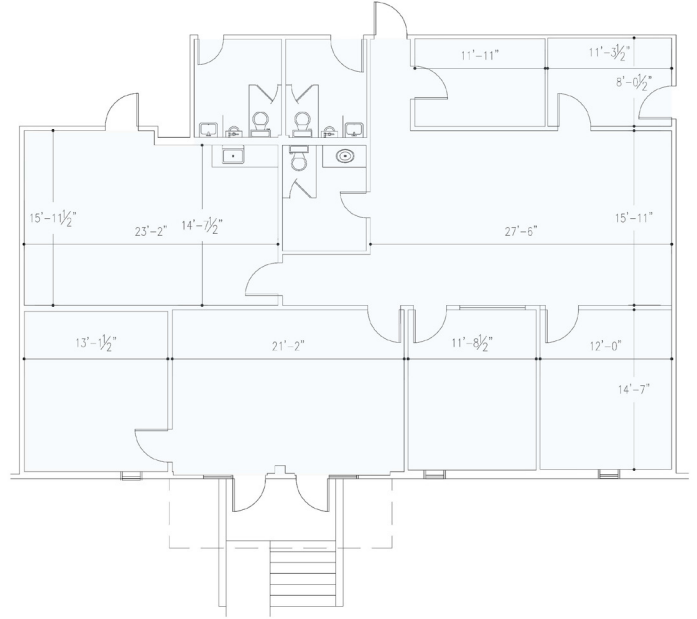
# ±18,378 SF WAREHOUSE FOR LEASE | CENTRAL CHARLOTTE

ATANDO BUSINESS PARK | 1310 ATANDO AVENUE | CHARLOTTE, NC 28206

## FLOOR PLAN: ±18,281 SF



## OFFICE PLAN: ±2,142 SF



FOR MORE INFORMATION, CONTACT:

### PETE KIDWELL

704.926.1404 (o) | 704.654.9343 (m)

[kidwell@beacondevelopment.com](mailto:kidwell@beacondevelopment.com)

500 East Morehead Street | Suite 200 | Charlotte, NC 28202

[www.beacondevelopment.com](http://www.beacondevelopment.com)

### ALEX HABECKER

704.926.1412 (o) | 407.473.0051 (m)

[alex@beacondevelopment.com](mailto:alex@beacondevelopment.com)

500 East Morehead Street | Suite 200 | Charlotte, NC 28202

[www.beacondevelopment.com](http://www.beacondevelopment.com)

