



# 1520 SOUTH

1520 SOUTH BOULEVARD, SUITE 215  
CHARLOTTE, NC 28203

## +4,636 SF OFFICE FOR LEASE

- Creative, 90,000 SF boutique office building in the heart of South End
- Located on the light rail at Bland Street Station
- Free parking at 3.0/1,000 SF in adjacent, structured parking deck
- Walking distance to restaurants and local hotspots
- Excellent visibility at prominent intersection on South Blvd
- Less than 2 minutes from I-77, I-277 and Charlotte CBD





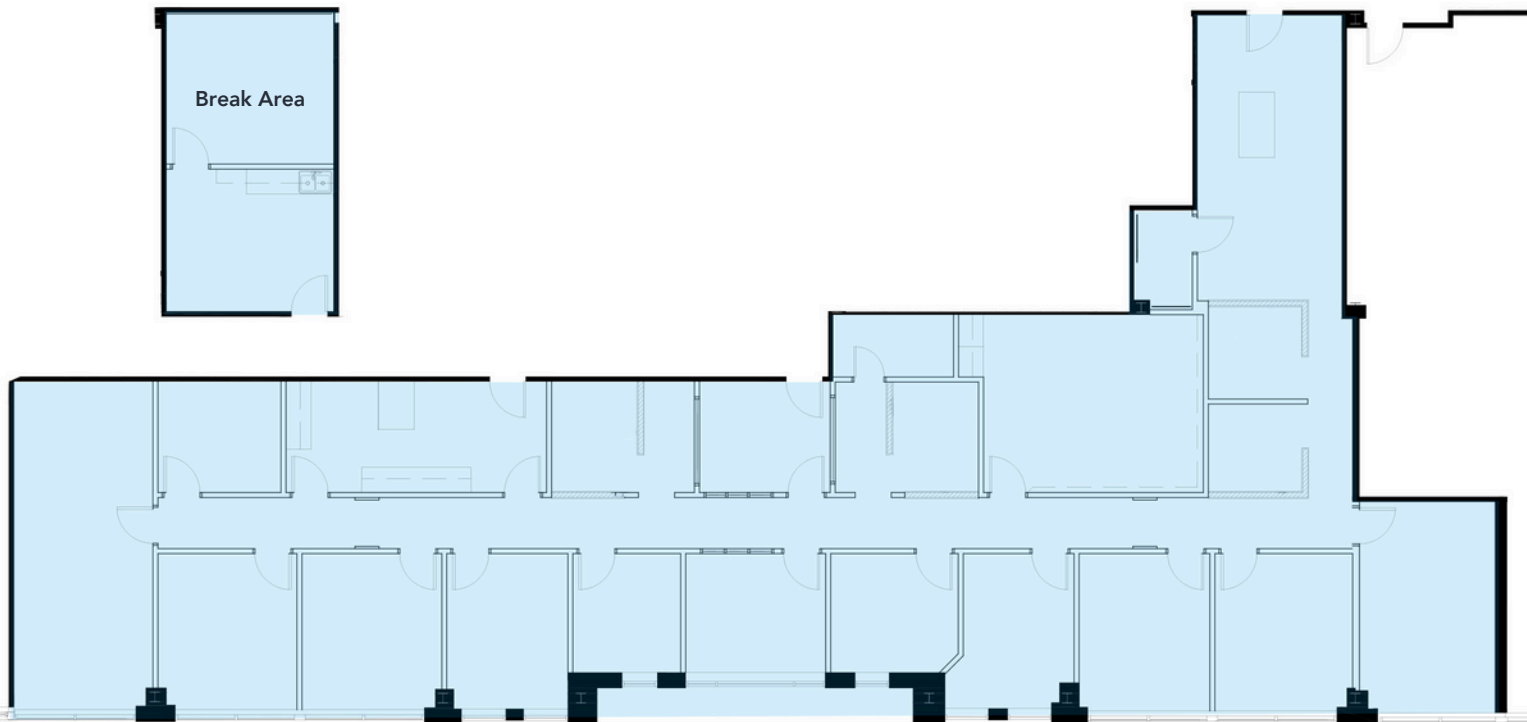
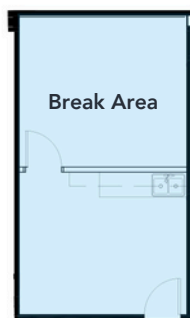


TOUR THE SPACE

# 1520 SOUTH

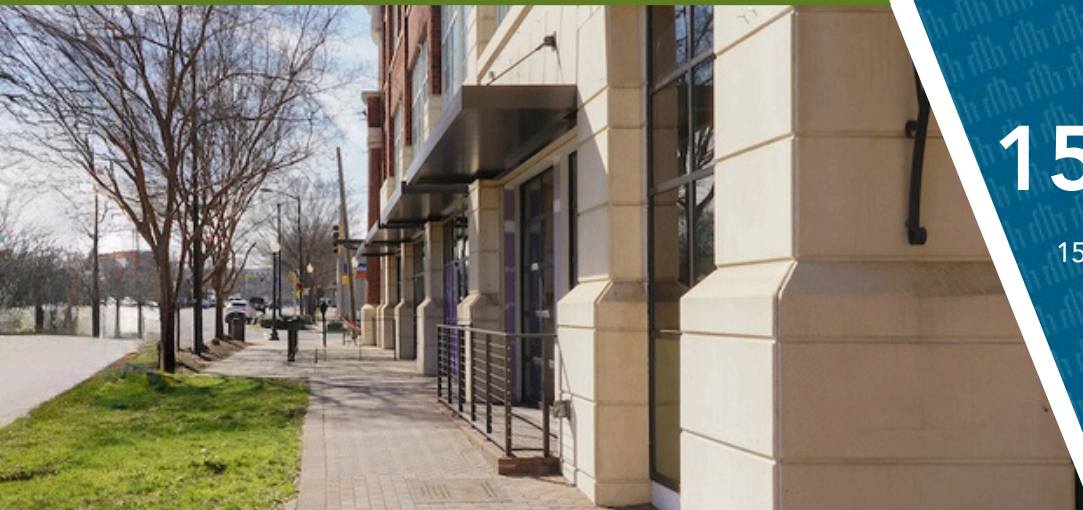
1520 SOUTH BOULEVARD, SUITE 215  
CHARLOTTE, NC 28203

SUITE 215: +4,636 SF





## SOUTH END AMENITIES



# 1520 SOUTH

1520 SOUTH BOULEVARD, SUITE 215  
CHARLOTTE, NC 28203



Beacon Partners is a commercial real estate firm specializing in the development, acquisition, and operation of industrial, office and mixed-use properties. Beacon leases, owns or manages more than 17.5+ million square feet of space throughout the Carolinas.