



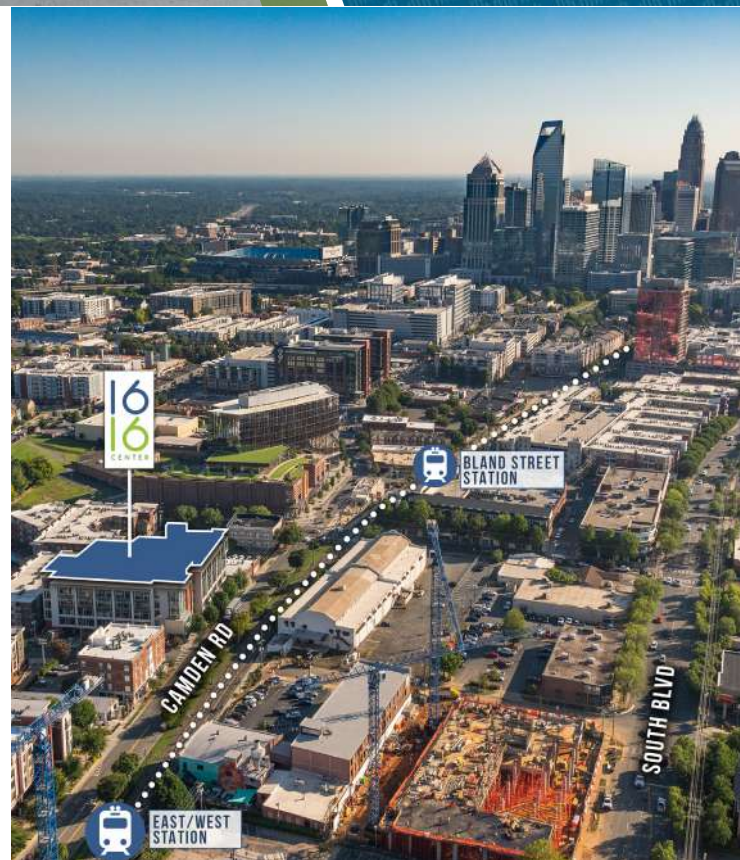
 BEACON  
PARTNERS

# 1616 CENTER

1616 CAMDEN ROAD  
SUITES 400 - 410  
CHARLOTTE, NC 28203

## +12,518 SF OFFICE FOR LEASE

- Creative, 80,000 SF boutique office in the heart of South End
- Ground floor retail and restaurant space including Leroy Fox, Clean Juice and Sabor Latin Grill
- State-of-the-art conference center overlooking the light rail
- First-class fitness center with men and women's locker rooms and showers
- Private parking deck free, at a 2.7 per 1,000 SF ratio
- Located directly by Lynx light rail, East/West Station
- Walking distance to restaurants and local hotspots
- Electric vehicle charging stations and bike share program
- Easy access to I-77, Charlotte Business District and Charlotte Douglas International Airport



 BEACON  
PARTNERS  
*Investing in the future of our community*

FOR MORE INFORMATION, CONTACT:

**CLAIRE SHEALY**

704.926.1409 (d) | [claire@beacondevelopment.com](mailto:claire@beacondevelopment.com)

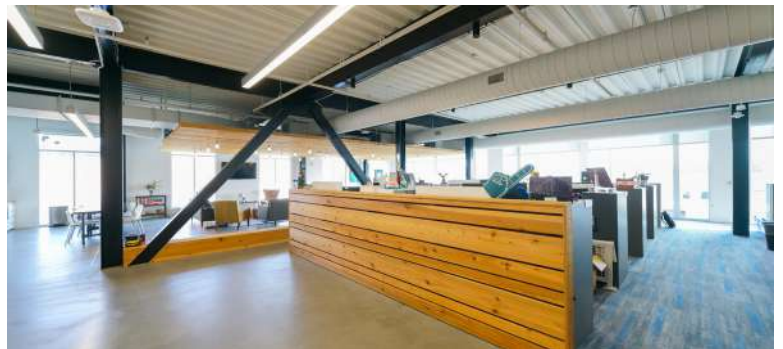
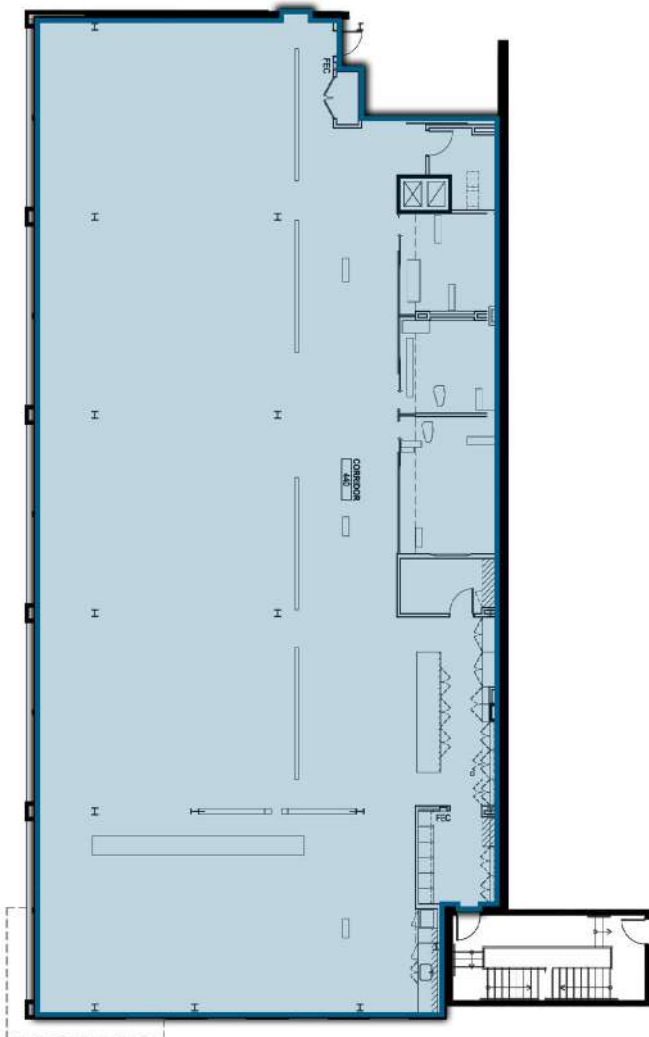
[www.beacondevelopment.com](http://www.beacondevelopment.com)



# 1616 CENTER

1616 CAMDEN ROAD  
SUITES 400 - 410  
CHARLOTTE, NC 28203

SUITE 400:  $\pm$ 8,479 SF



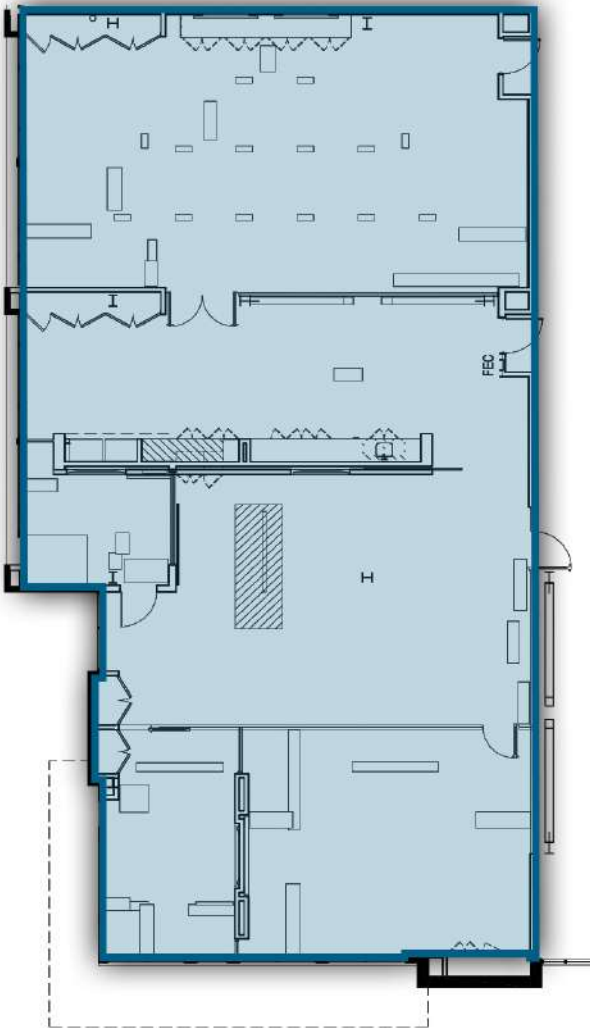




# 1616 CENTER

1616 CAMDEN ROAD  
SUITES 400 - 410  
CHARLOTTE, NC 28203

SUITE 410:  $\pm$ 4,039 SF



FOR MORE INFORMATION, CONTACT:

**CLAIRE SHEALY**

704.926.1409 (d) | [claire@beacondevelopment.com](mailto:claire@beacondevelopment.com)

[www.beacondevelopment.com](http://www.beacondevelopment.com)



## SOUTH END AMENITIES



# 1616 CENTER

1616 CAMDEN  
SUITES 400 - 410  
CHARLOTTE, NC 28203



Beacon Partners is a commercial real estate firm specializing in the development, acquisition, and operation of industrial, office and mixed-use properties. Beacon leases, owns or manages more than 14.5+ million square feet of space throughout the Carolinas.



FOR MORE INFORMATION, CONTACT:

**CLAIRE SHEALY**

704.926.1409 (d) | [claire@beacondevelopment.com](mailto:claire@beacondevelopment.com)

[www.beacondevelopment.com](http://www.beacondevelopment.com)