

OFFICE FOR LEASE IN SOUTH END

# 1616

CENTER

1616 CAMDEN ROAD  
CHARLOTTE, NC

  
BEACON  
PARTNERS







CREATIVE  
**80,000 SF**  
BOUTIQUE OFFICE

Ground floor retail and  
restaurant space including



LARGE  
**EXECUTIVE BUILDING**  
**CONFERENCE ROOM**  
AVAILABLE

FIRST-CLASS  
**FITNESS CENTER**

with men and women's locker  
rooms and showers





## PRIVATE PARKING DECK

free, at a 2.7 per 1,000 SF ratio

Located directly by  
**LYNX LIGHT RAIL**  
**EAST/WEST STATION**

## WALKING DISTANCE

to restaurants and local hotspots

## ELECTRIC VEHICLE CHARGING STATION

and bike share program

## EASY ACCESS

to I-77, Charlotte Business District  
& Charlotte Douglas  
International Airport





#### ATHERTON MILL

ANTHROPOLOGIE  
SEPHORA  
CAVA  
LULULEMON  
FREE PEOPLE  
BONOBOS  
GOLDEN CARROT  
EAGLE FOOD & BEER HALL  
BOCADO  
WARBY PARKER  
BARRY'S BOOT CAMP  
WEST ELM  
O-KU

SNOOZE AM EATERY  
SILVERLAKE RAMEN

RAILAY THAI CUISINE  
BK PILATIES  
LALIMA  
THE PEACH COBBLER FACTORY

#### DILWORTH

#### MIDTOWN

DOWD YMCA

#### DESIGN CENTER

BARCELONA WINE BAR  
PEPPERBOX DOUGHNUTS  
FIT ATELIER  
ELSEWHERE  
SUPERICA  
JENI'S ICE CREAM

16  
16  
CENTER

LEROY FOX  
SABOR LATIN STREET GRILL  
CLEAN JUICE  
TWO SCOOPS ICE CREAM

WOODEN ROBOT

#### RAILYARD

NORTH ITALIA  
STIR  
RHINO MARKET  
ORANGE THEORY

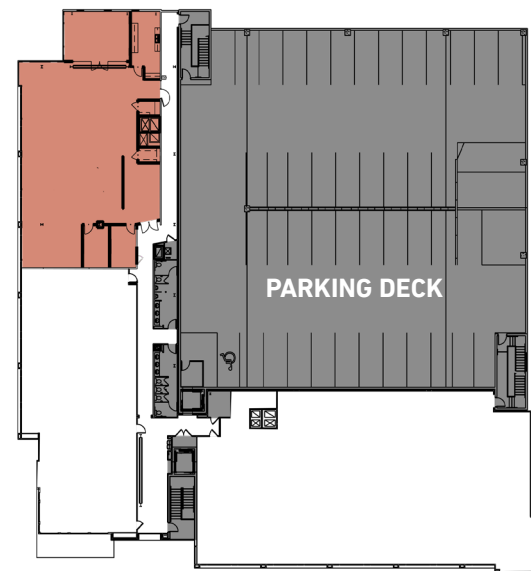
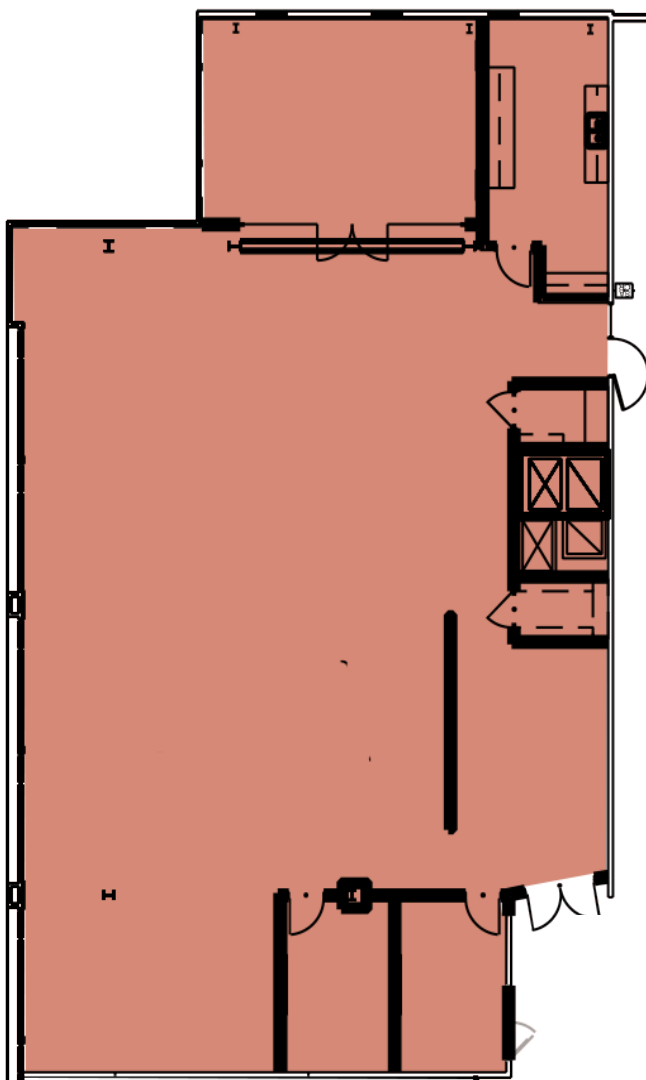
#### VANTAGE

CULINARY DROP-OUT  
SIXTY VINES  
DRAM & DRAUGHT  
TOASTIQUE  
UPTOWN YOLK  
WATERBEAN COFFEE

#### SOUTH END

## SUITE 550 - 4,895 SF

► VIRTUAL TOUR



For Additional Information, please contact: **CLAIRE SHEALY** • 704.607.1984 • 704.926.1409 • [claire@beacondevelopment.com](mailto:claire@beacondevelopment.com)





16  
16  
CENTER

Beacon Partners is a commercial real estate firm specializing in the development, acquisition, and operation of industrial, office and mixed-use properties. Beacon leases, owns or manages more than 17.5+ million square feet of space throughout the Carolinas.

For Additional Information,  
please contact:

**CLAIRE SHEALY**

704.607.1984  
704.926.1409

✉ [claire@beacondevelopment.com](mailto:claire@beacondevelopment.com)



BEACON  
PARTNERS