

OFFICE FOR LEASE IN SOUTH END

# 1616 CENTER

1616 CAMDEN ROAD  
CHARLOTTE, NC



  
BEACON  
PARTNERS







CREATIVE  
**80,000 SF**  
BOUTIQUE OFFICE

Ground floor retail and  
restaurant space including



LARGE  
**EXECUTIVE BUILDING  
CONFERENCE ROOM**  
AVAILABLE

FIRST-CLASS  
**FITNESS CENTER**  
with men and women's locker  
rooms and showers





## PRIVATE PARKING DECK

free, at a 2.7 per 1,000 SF ratio

Located directly by  
**LYNX LIGHT RAIL  
EAST/WEST STATION**

## WALKING DISTANCE

to restaurants and local hotspots

## ELECTRIC VEHICLE CHARGING STATION

and bike share program

## EASY ACCESS

to I-77, Charlotte Business District  
& Charlotte Douglas  
International Airport





**ATHERTON MILL**

- ANTHROPOLOGIE
- SEPHORA
- CAVA
- LULULEMON
- FREE PEOPLE
- BONOBOS
- GOLDEN CARROT
- EAGLE FOOD & BEER HALL
- BOCADO
- WARBY PARKER
- BARRY'S BOOT CAMP
- WEST ELM
- O-KU

**SNOOZE AM EATERY**  
**SILVERLAKE RAMEN**

**RAILAY THAI CUISINE**  
**BK PILATIES**  
**LALIMA**  
**THE PEACH COBBLER FACTORY**

**DILWORTH**

**MIDTOWN**

**DOWD YMCA**

**DESIGN CENTER**

- BARCELONA WINE BAR
- PEPPERBOX DOUGHNUTS
- FIT ATELIER
- ELSEWHERE
- SUPERICA
- JENI'S ICE CREAM

**16  
16  
CENTER**

**LEROY FOX**  
**SABOR LATIN STREET GRILL**  
**CLEAN JUICE**  
**TWO SCOOPS ICE CREAM**

**WOODEN ROBOT**



**FLOWER CHILD**

**RAILYARD**

- NORTH ITALIA
- STIR
- RHINO MARKET
- ORANGE THEORY

**SOUTH END**

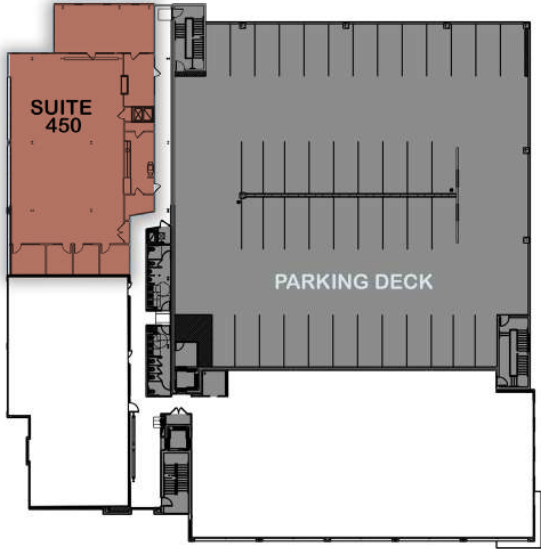
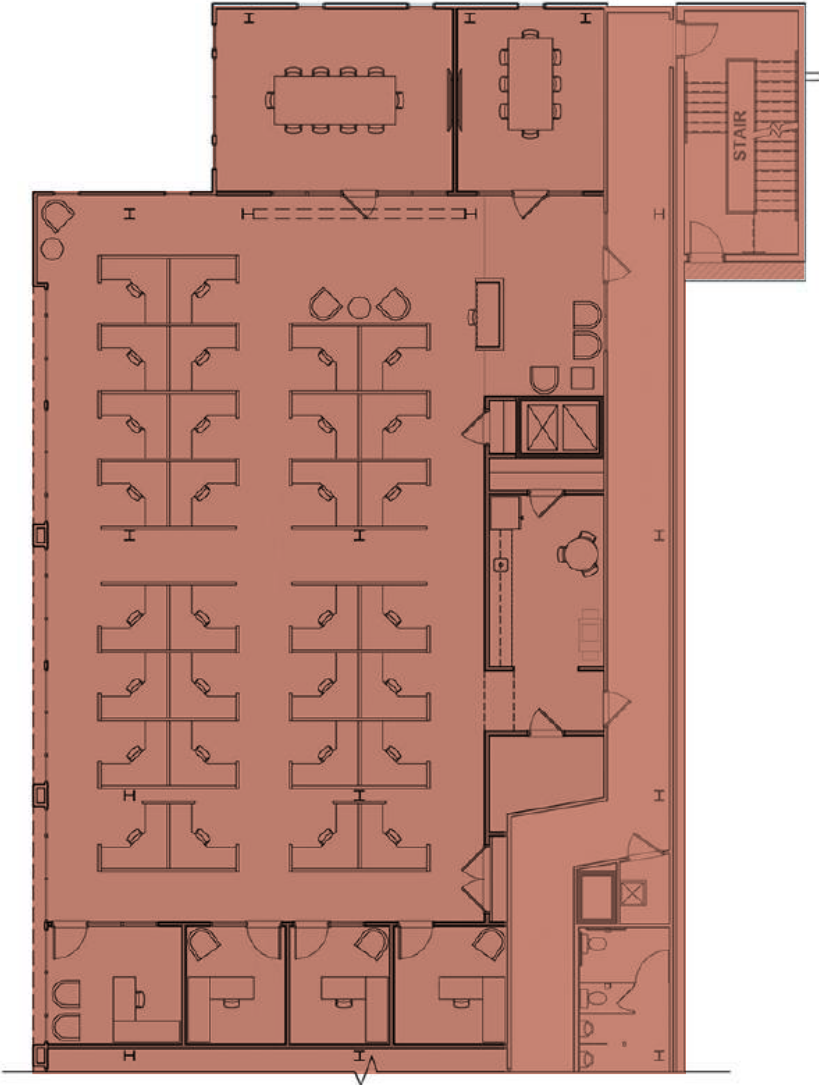
**VANTAGE**

- CULINARY DROPOUT
- SIXTY VINES
- DRAM & DRAUGHT
- TOASTIQUE
- UPTOWN YOLK
- WATERBEAN COFFEE



SUITE 450 - 5,440 SF

[▶ VIRTUAL TOUR](#)





16  
16  
CENTER

Beacon Partners is a commercial real estate firm specializing in the development, acquisition, and operation of industrial, office and mixed-use properties. Beacon leases, owns or manages more than 17.5+ million square feet of space throughout the Carolinas.

For Additional Information,  
please contact:

**CLAIRE SHEALY**

📞 704.607.1984  
704.926.1409

✉️ [claire@beacondevelopment.com](mailto:claire@beacondevelopment.com)

  
BEACON  
PARTNERS