

# 1616 CENTER

1616 CAMDEN ROAD | SUITE 350 | CHARLOTTE, NC 28203



## SOUTH END CREATIVE OFFICE SPACE FOR LEASE

### 9,628 SF

- Building signage opportunities
- 10,220 sf of ground floor retail and restaurant space
- Contemporary design with modern amenities
- State-of-the-art private conference center with window overlooking the lightrail
- First-class fitness center with men and womens locker rooms and showers
- Private parking deck for tenants and free parking for visitors
- Abundant on-street parking
- Quick access to Lynx lightrail and rail trail
- Walking distance to restaurants and local hotspots
- Electric vehicle charging stations and bike share program
- Easy access to 1-77, Charlotte Business District and Charlotte Douglas International Airport



FOR MORE INFORMATION, CONTACT:

KRISTY VENNING

704.926.1409 (d) | [kristy@beacondevelopment.com](mailto:kristy@beacondevelopment.com)

500 E Morehead Street | Suite 200 | Charlotte, NC 28202 | [beacondevelopment.com](http://beacondevelopment.com)

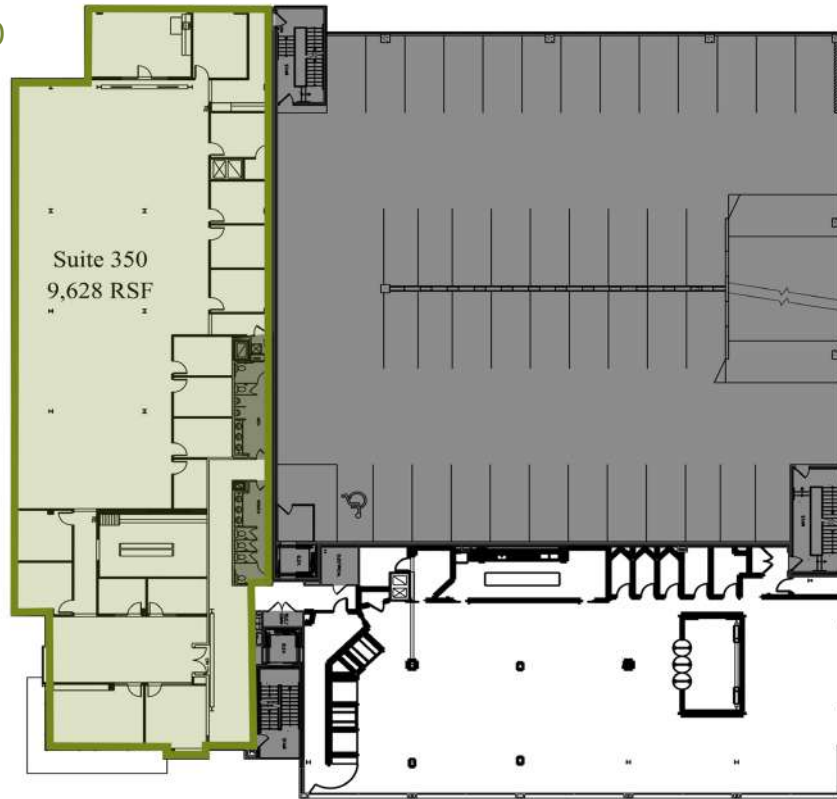
All information regarding the property was obtained from sources deemed reliable but no warranty or representation is made of the accuracy thereof, and the property is subject to prior sale, lease or withdrawal.



# 1616 CENTER

1616 CAMDEN ROAD | SUITE 350 | CHARLOTTE, NC 28203

## FLOOR PLAN: SUITE 350



## AERIAL:



FOR MORE INFORMATION, CONTACT:

KRISTY VENNING

704.926.1409 (d) | [kristy@beacondevelopment.com](mailto:kristy@beacondevelopment.com)

500 E Morehead Street | Suite 200 | Charlotte, NC 28202 | [beacondevelopment.com](http://beacondevelopment.com)



BEACON  
PARTNERS

All information regarding the property was obtained from sources deemed reliable but no warranty or representation is made of the accuracy thereof, and the property is subject to prior sale, lease or withdrawal.