

OFFICE FOR LEASE IN SOUTH END

1616 CENTER

1616 CAMDEN ROAD
CHARLOTTE, NC


BEACON
PARTNERS





CREATIVE
80,000 SF
BOUTIQUE OFFICE

Ground floor retail and
restaurant space including



LARGE
EXECUTIVE BUILDING
CONFERENCE ROOM
AVAILABLE

FIRST-CLASS
FITNESS CENTER

with men and women's locker
rooms and showers



PRIVATE PARKING DECK

free, at a 2.7 per 1,000 SF ratio

Located directly by
**LYNX LIGHT RAIL
EAST/WEST STATION**

WALKING DISTANCE

to restaurants and local hotspots

ELECTRIC VEHICLE CHARGING STATION

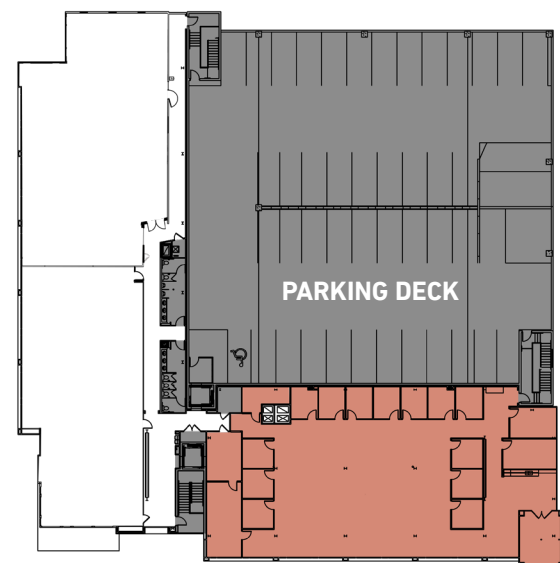
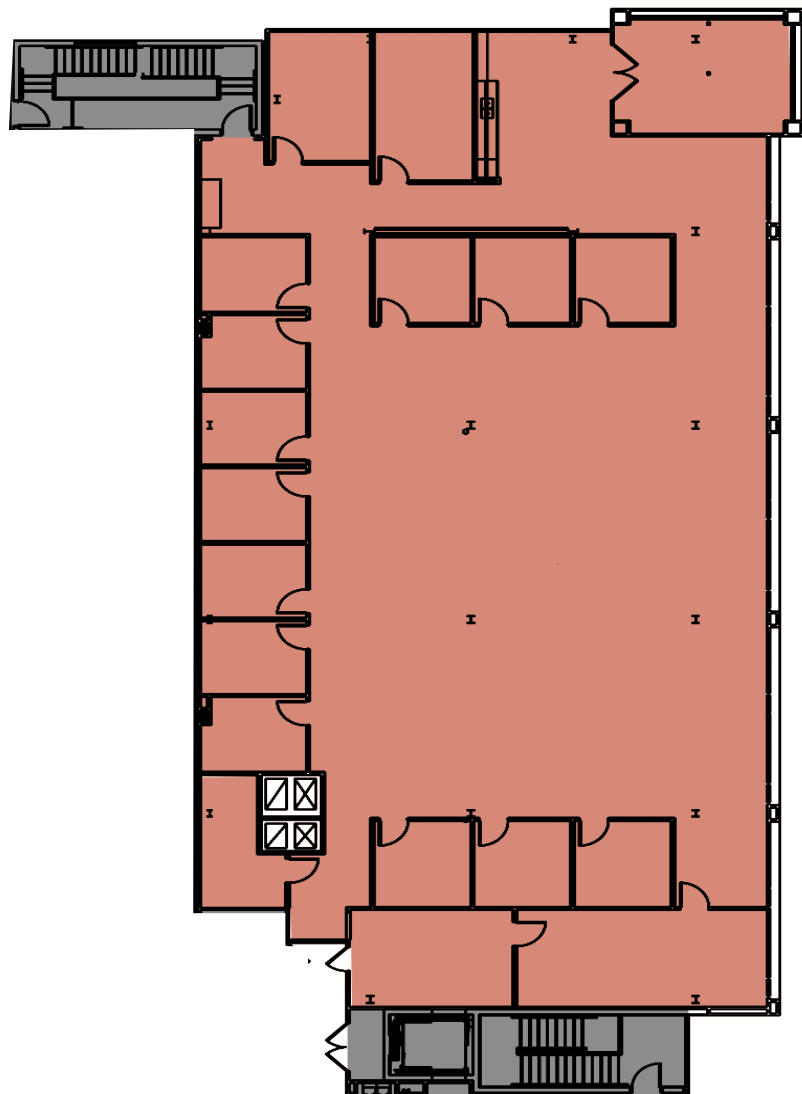
and bike share program

EASY ACCESS

to I-77, Charlotte Business District
& Charlotte Douglas
International Airport

SUITE 500 - 8,608 SF

► VIRTUAL TOUR



For Additional Information, please contact: **CLAIRE SHEALY LOVETTE** • 704.607.1984 • 704.926.1409 • claire@beacondevelopment.com
WILLIAM MANN • 901.210.3908 • william@beacondevelopment.com



ATHERTON MILL

ANTHROPOLOGIE
SEPHORA
CAVA
LULULEMON
FREE PEOPLE
BONOBOS
GOLDEN CARROT
EAGLE FOOD & BEER HALL
BOCADO
WARBY PARKER
BARRY'S BOOT CAMP
WEST ELM
O-KU

SNOOZE AM EATERY
SILVERLAKE RAMEN

RAILAY THAI CUISINE
BK PILATIES
LALIMA

DILWORTH

MIDTOWN

DOWD YMCA

DESIGN CENTER

BARCELONA WINE BAR
PEPPERBOX DOUGHNUTS
FIT ATELIER
ELSEWHERE
SUPERICA
JENI'S ICE CREAM

1616
CENTER

LEROY FOX
SABOR LATIN STREET GRILL
CLEAN JUICE
TWO SCOOPS ICE CREAM

WOODEN ROBOT



FLOWER CHILD

RAILYARD

NORTH ITALIA
STIR
RHINO MARKET
ORANGE THEORY

SOUTH END

VANTAGE

CULINARY DROP-OUT
SIXTY VINES
DRAM & DRAUGHT
TOASTIQUE
UPTOWN YOLK
WATERBEAN COFFEE



16
16
CENTER

Beacon Partners is a commercial real estate firm specializing in the development, acquisition, and operation of industrial, office and mixed-use properties. Beacon leases, owns or manages more than 14+ million square feet of space throughout the Carolinas.

For Additional Information,
please contact:

CLAIRE SHEALY LOVETTE



704.607.1984

704.926.1409



claire@beacondevelopment.com

WILLIAM MANN



901.210.3908

919.261.7566



william@beacondevelopment.com



BEACON
PARTNERS