

1616 CENTER

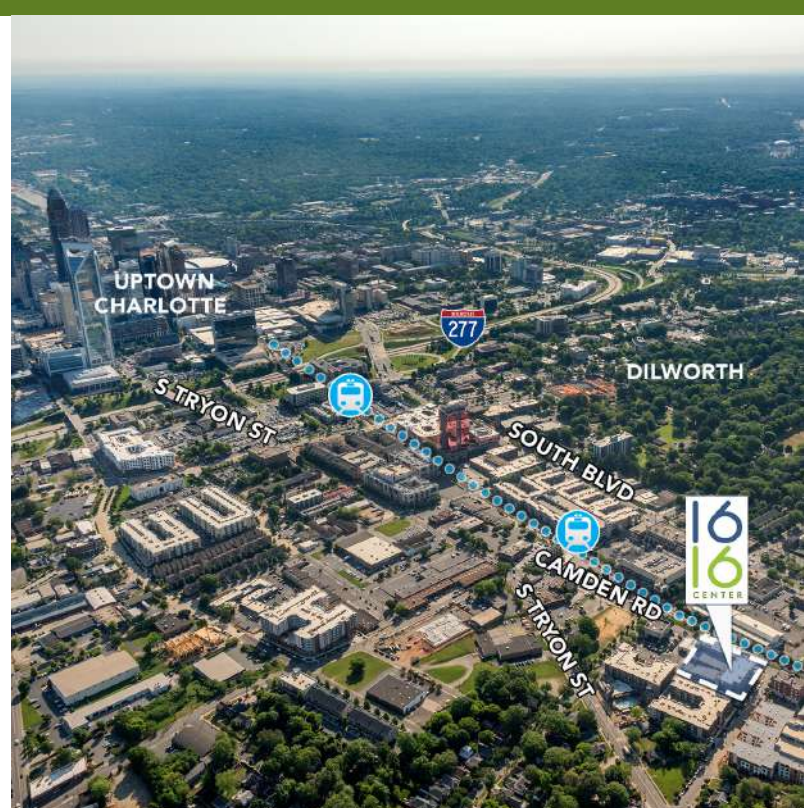
1616 CAMDEN ROAD | SUITE 210 | CHARLOTTE, NC 28203



16
16
CENTER

SOUTH END CREATIVE OFFICE SPACE FOR LEASE +/-2,484 SF

- Space is creative; large glass windows
- Suite is adjacent to state-of-the-art private conference room
- Building signage opportunities
- 10,220 SF of ground floor retail and restaurant space
- Contemporary design with modern amenities
- First-class fitness center
- Private parking deck for tenants and free parking for visitors
- Quick access to LYNX Lightrail and Rail Trail
- Walking distance to restaurants and local hotspots
- Easy access to I-77, Charlotte Business District and Charlotte Douglas International Airport



FOR MORE INFORMATION, CONTACT:

KRISTY VENNING
704.926.1409 (d)
kristy@beacondevelopment.com

500 East Morehead Street | Suite 200 | Charlotte, NC 28202
www.beacondevelopment.com

ERIN SHAW
704.926.1414 (d)
erin@beacondevelopment.com

500 East Morehead Street | Suite 200 | Charlotte, NC 28202
www.beacondevelopment.com

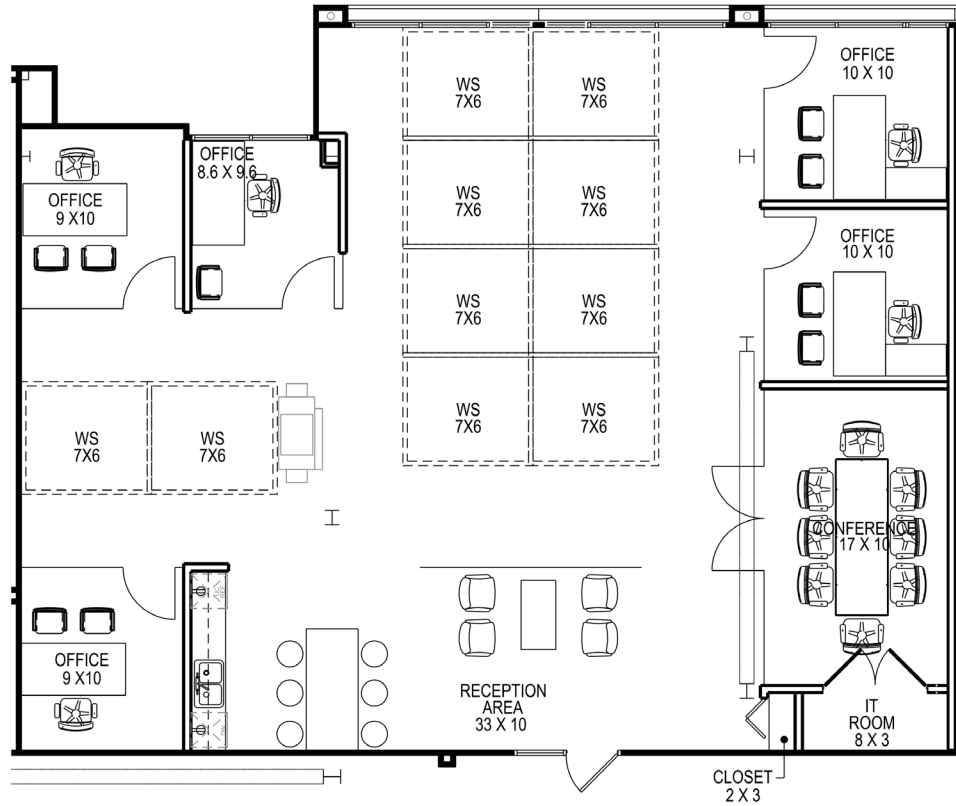


**BEACON
PARTNERS**

1616 CENTER

1616 CAMDEN ROAD | SUITE 210 | CHARLOTTE, NC 28203

FLOOR PLAN:



AERIAL:



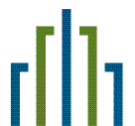
FOR MORE INFORMATION, CONTACT:

KRISTY VENNING
704.926.1409 (d)
kristy@beacondevelopment.com

500 East Morehead Street | Suite 200 | Charlotte, NC 28202
www.beacondevelopment.com

ERIN SHAW
704.926.1414 (d)
erin@beacondevelopment.com

500 East Morehead Street | Suite 200 | Charlotte, NC 28202
www.beacondevelopment.com



**BEACON
PARTNERS**