

1616 CENTER

1616 CAMDEN ROAD | SUITE 250 | CHARLOTTE, NC 28203



SOUTH END CREATIVE OFFICE SPACE FOR LEASE

+/-5,987 SF

- Creative, 80,000 SF boutique office in the heart of South End
- Ground floor retail and restaurant space including Leroy Fox, Clean Juice and Sabor Latin Grill
- State-of-the-art conference center overlooking the light rail
- First-class fitness center with men and women's locker rooms and showers
- Private parking deck free, at a 2.7 per 1,000 SF ratio
- On-street parking
- Located directly by Lynx light rail
- Walking distance to restaurants and local hotspots
- Electric vehicle charging stations and bike share program
- Easy access to I-77, Charlotte Business District and Charlotte Douglas International Airport



FOR MORE INFORMATION, CONTACT:

ERIN SHAW

704.926.1414 | erin@beacondevelopment.com

500 East Morehead Street | Suite 200 | Charlotte, NC 28202

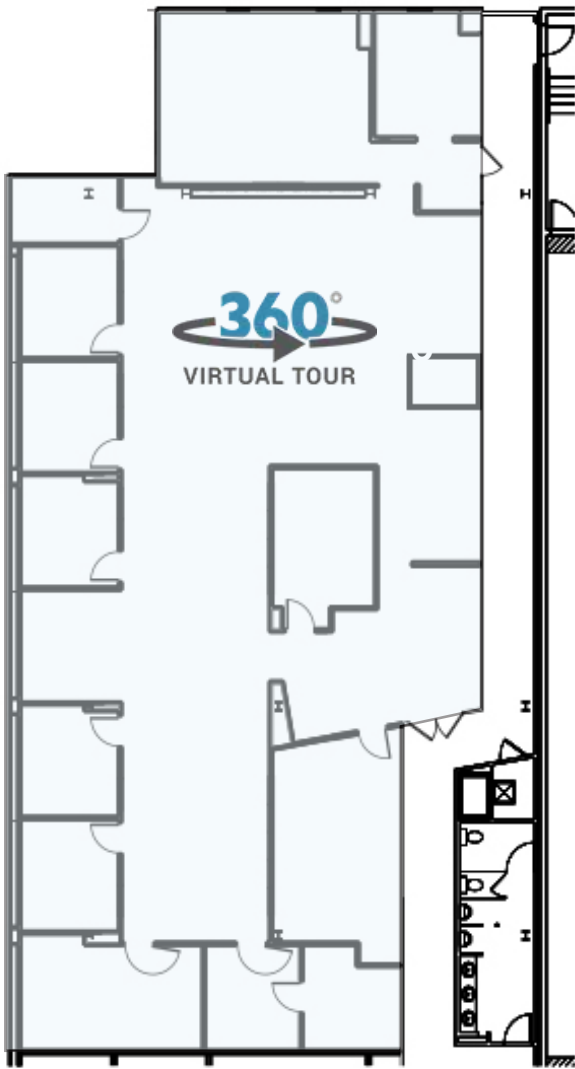
www.beacondevelopment.com



1616 CENTER

1616 CAMDEN ROAD | SUITE 250 | CHARLOTTE, NC 28203

FLOOR PLAN: ±5,987 SF



FOR MORE INFORMATION, CONTACT:

ERIN SHAW

704.926.1414 | erin@beacondevelopment.com

500 East Morehead Street | Suite 200 | Charlotte, NC 28202

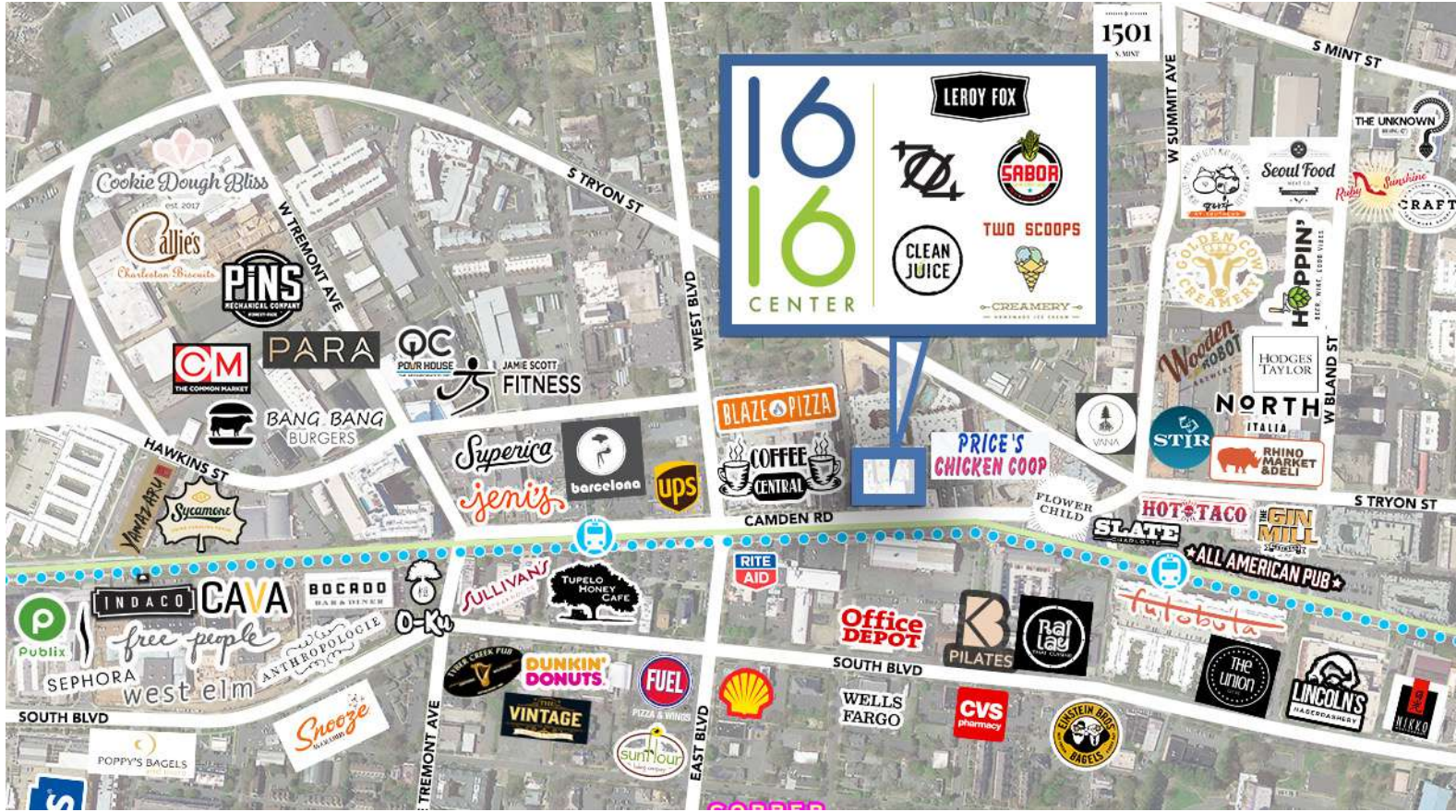
www.beacondevelopment.com



1616 CENTER

1616 CAMDEN ROAD | SUITE 250 | CHARLOTTE, NC 28203

SOUTH END AMENITIES:



FOR MORE INFORMATION, CONTACT:

ERIN SHAW

704.926.1414 | erin@beacondevelopment.com

500 East Morehead Street | Suite 200 | Charlotte, NC 28202

www.beacondevelopment.com

