

# 1616 CENTER

1616 CAMDEN ROAD | SUITE 250 | CHARLOTTE, NC 28203



## SOUTH END CREATIVE OFFICE SPACE FOR LEASE

**+/-5,674 SF**

- Creative, 80,000 SF boutique office in the heart of South End
- Ground floor retail and restaurant space including Leroy Fox, Clean Juice and Sabor Latin Grill
- State-of-the-art conference center overlooking the light rail
- First-class fitness center with men and women's locker rooms and showers
- Private parking deck free, at a 2.7 per 1,000 SF ratio
- On-street parking
- Located directly by Lynx light rail
- Walking distance to restaurants and local hotspots
- Electric vehicle charging stations and bike share program
- Easy access to I-77, Charlotte Business District and Charlotte Douglas International Airport



FOR MORE INFORMATION, CONTACT:

**KRISTY VENNING**

704.926.1409 | [kristy@beacondevelopment.com](mailto:kristy@beacondevelopment.com)

500 East Morehead Street | Suite 200 | Charlotte, NC 28202

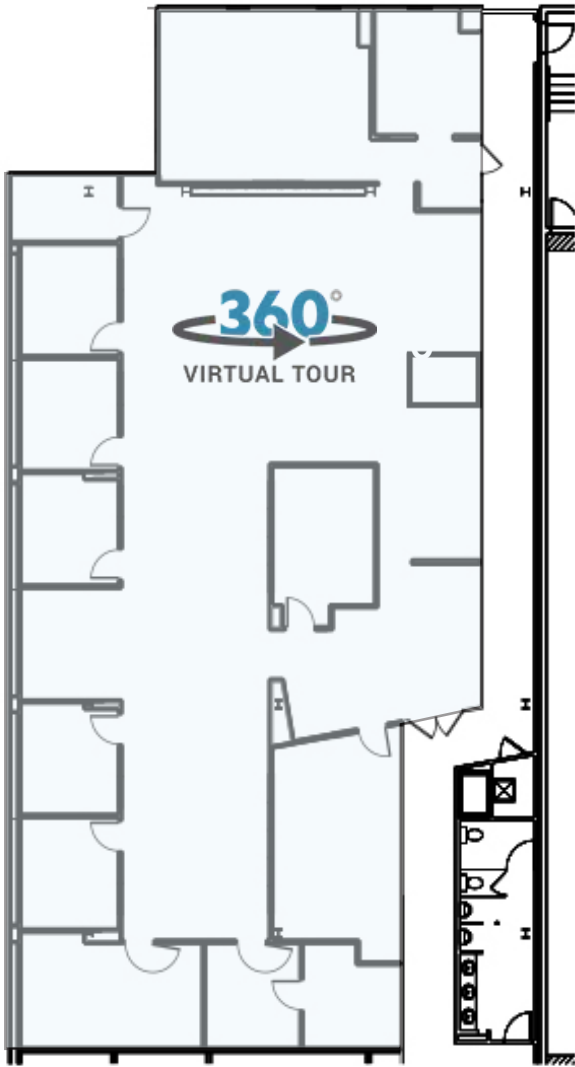
[www.beacondevelopment.com](http://www.beacondevelopment.com)



# 1616 CENTER

1616 CAMDEN ROAD | SUITE 250 | CHARLOTTE, NC 28203

FLOOR PLAN: ±5,674 SF



FOR MORE INFORMATION, CONTACT:

**KRISTY VENNING**

704.926.1409 | [kristy@beacondevelopment.com](mailto:kristy@beacondevelopment.com)

500 East Morehead Street | Suite 200 | Charlotte, NC 28202

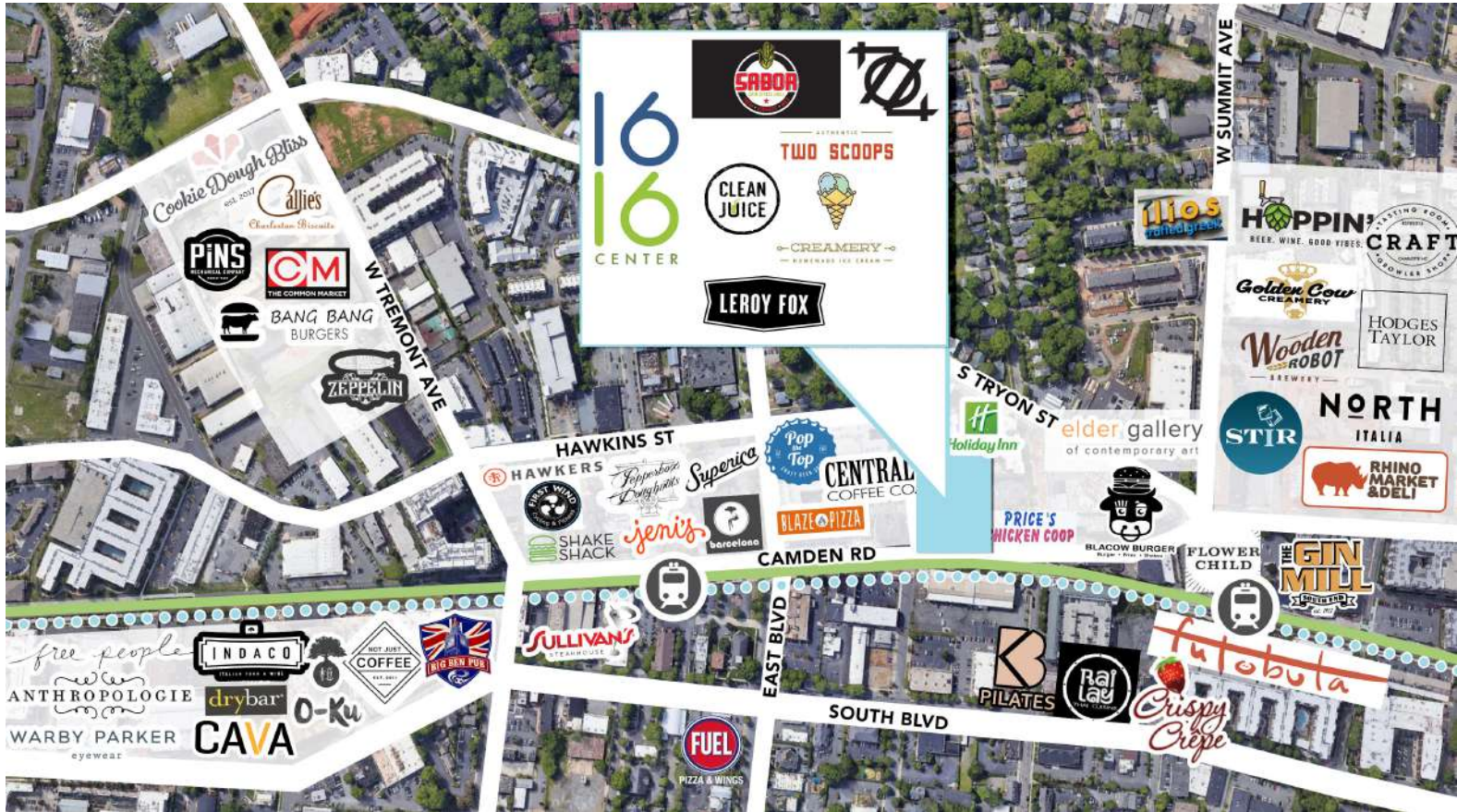
[www.beacondevelopment.com](http://www.beacondevelopment.com)



# 1616 CENTER

1616 CAMDEN ROAD | SUITE 250 | CHARLOTTE, NC 28203

## SOUTH END AMENITIES:



FOR MORE INFORMATION, CONTACT:

**KRISTY VENNING**

704.926.1409 | [kristy@beacondevelopment.com](mailto:kristy@beacondevelopment.com)

500 East Morehead Street | Suite 200 | Charlotte, NC 28202

[www.beacondevelopment.com](http://www.beacondevelopment.com)

