

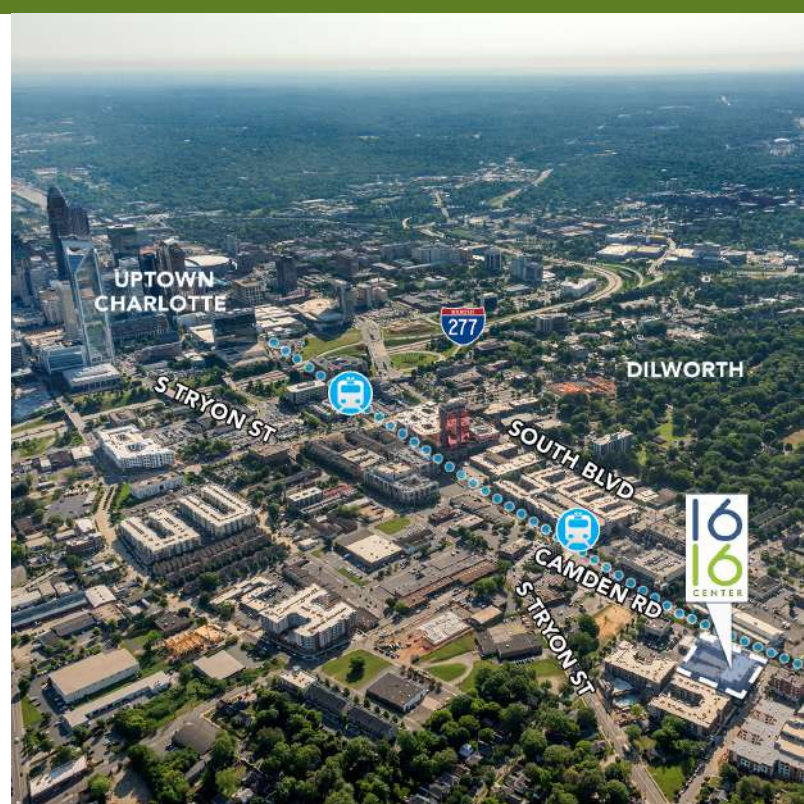
# 1616 CENTER

1616 CAMDEN ROAD | SUITE 350 | CHARLOTTE, NC 28203



## SOUTH END CREATIVE OFFICE SPACE FOR LEASE +/-9,628 SF

- Building signage opportunities
- 10,220 sf of ground floor retail and restaurant space
- Contemporary design with modern amenities
- State-of-the-art private conference center with window overlooking the light rail
- First-class fitness center with men and women's locker rooms and showers
- Private parking deck for tenants and free parking for visitors
- Abundant on-street parking
- Quick access to Lynx light rail and rail trail
- Walking distance to restaurants and local hotspots
- Electric vehicle charging stations and bike share program
- Easy access to I-77, Charlotte Business District and Charlotte Douglas International Airport



FOR MORE INFORMATION, CONTACT:

**KRISTY VENNING**  
704.926.1409 (d)  
[kristy@beacondevelopment.com](mailto:kristy@beacondevelopment.com)

500 East Morehead Street | Suite 200 | Charlotte, NC 28202  
[www.beacondevelopment.com](http://www.beacondevelopment.com)

**ERIN SHAW**  
704.926.1414 (d)  
[erin@beacondevelopment.com](mailto:erin@beacondevelopment.com)

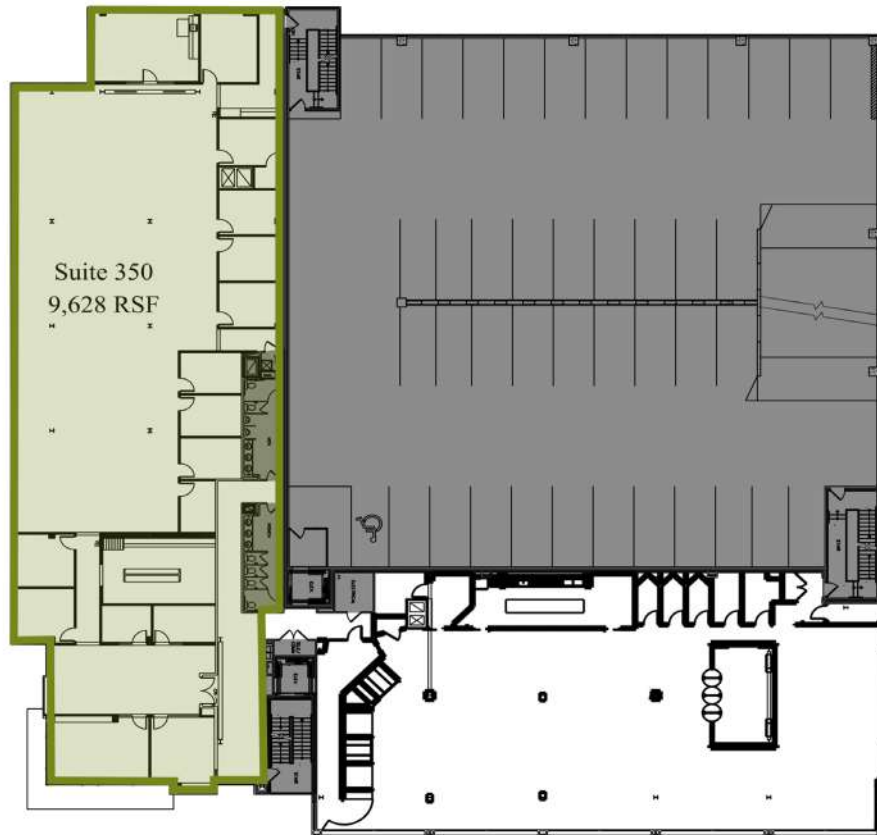
500 East Morehead Street | Suite 200 | Charlotte, NC 28202  
[www.beacondevelopment.com](http://www.beacondevelopment.com)



# 1616 CENTER

1616 CAMDEN ROAD | SUITE 350 | CHARLOTTE, NC 28203

## FLOOR PLAN:



## AERIAL:



FOR MORE INFORMATION, CONTACT:

**KRISTY VENNING**  
704.926.1409 (d)  
[kristy@beacondevelopment.com](mailto:kristy@beacondevelopment.com)

500 East Morehead Street | Suite 200 | Charlotte, NC 28202  
[www.beacondevelopment.com](http://www.beacondevelopment.com)

FOR MORE INFORMATION, CONTACT:

**KRISTY VENNING**  
704.926.1409 (d)  
[kristy@beacondevelopment.com](mailto:kristy@beacondevelopment.com)

500 East Morehead Street | Suite 200 | Charlotte, NC 28202  
[www.beacondevelopment.com](http://www.beacondevelopment.com)



**BEACON  
PARTNERS**