

1520 SOUTH

1520 SOUTH

BOUTIQUE OFFICE BUILDING IN
THE HEART OF SOUTH END



BEACON
PARTNERS

CLAIRE SHEALY

704.607.1984 (c) | 704.926.1409 (d)

claire@beacondevelopment.com

1520 South is conveniently located at a highly visible corner of South Boulevard and East Park Avenue in the South End submarket. This desirable location is less than a mile from downtown Charlotte and minutes from several of Charlotte's most walkable neighborhoods.

1520
SOUTH



1520
SOUTH BOULEVARD
NEAR DILWORTH,
MYERS PARK AND
EASTOVER



FREE
PARKING
ON-SITE
3.0/1,000



EASY
ACCESS TO
1-77, I-277 +
CHARLOTTE CBD



THREE-STORY
90,000 SF
OFFICE BUILDING



STEPS FROM
THE LIGHT RAIL AT
BLAND ST.
STATION



WALKING
DISTANCE
TO RESTAURANTS,
BREWRIES +
LOCAL HOT SPOTS



CLAIRE SHEALY

704.607.1984 (c) | 704.926.1409 (d)

claire@beacondevelopment.com

1520
SOUTH



Area Amenities

- CLOSE NEIGHBORS**
- YUNTA NIKKEI
 - YAMAZARU SUSHI & SAKE
 - LINK & PIN SOUTH END
 - THE WATERMAN FISH BAR
 - SUFFOLK PUNCH
 - CHIPOTLE
 - VELVET TACO
 - FIVE GUYS



LOSO

DILWORTH

1520 SOUTH



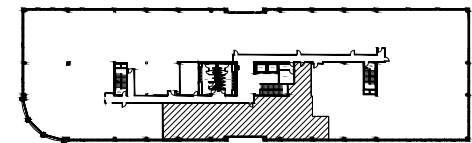
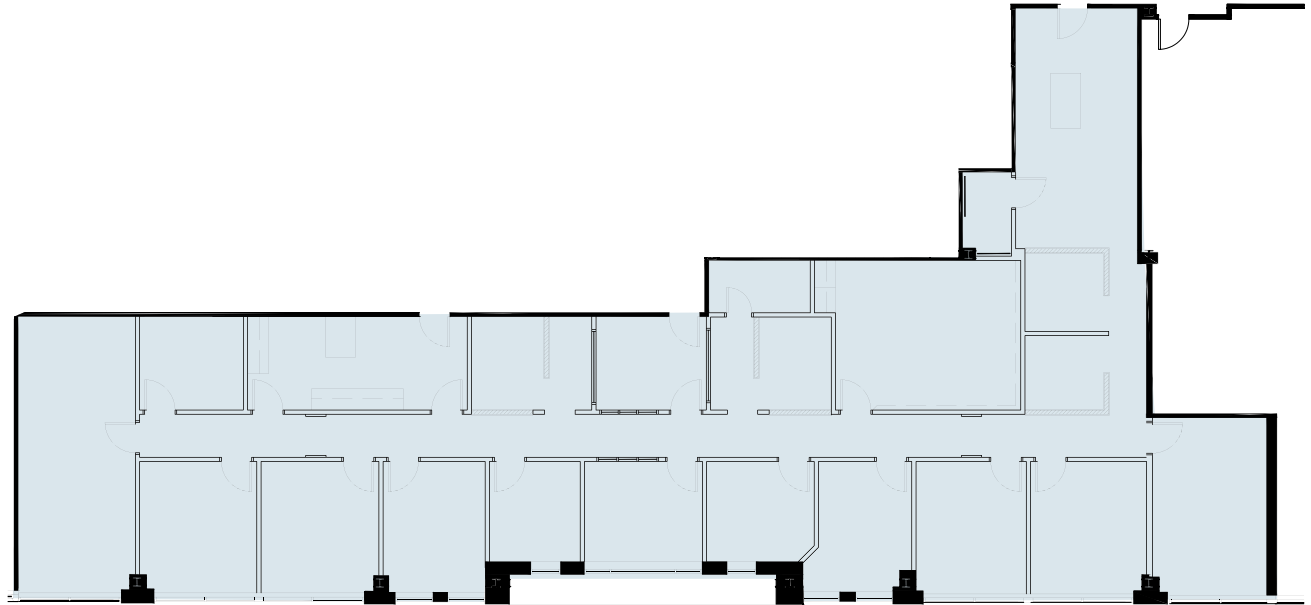
MIDTOWN

SOUTH END

SUITE 215 | ± 4,678 SF

▶ TAKE A VIRTUAL TOUR

1520
SOUTH



KEY PLAN

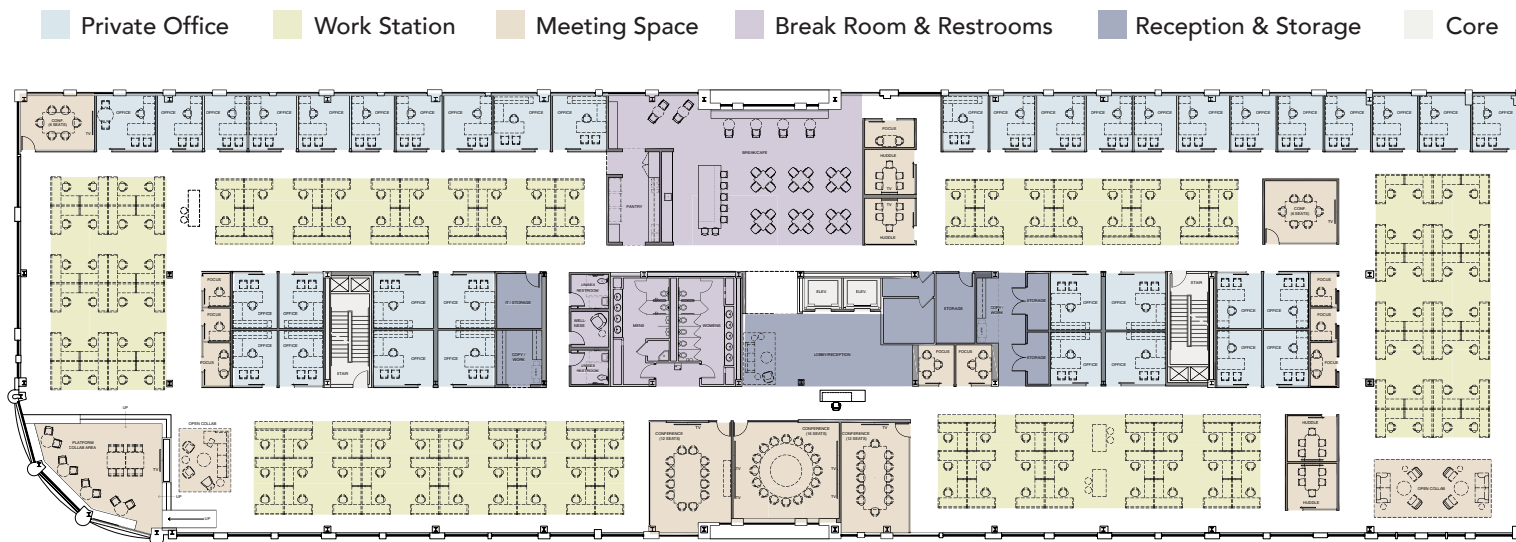


CLAIRE SHEALY

704.607.1984 (c) | 704.926.1409 (d)

claire@beacondevelopment.com

SAMPLE TEST FIT



WORKSPACES

Private Offices	38
Workstations	142
TOTAL	180

MEETING SPACES

Focus Rooms 1-3 seats	9
Huddle Rooms 5 seats	4
Small Conference 6 seats	2
Large Conference 12 seats	2
X-Large Conference 16 seats	1
Open Collaboration	2

SHARED SPACE & SUPPORT

Reception	1
Break Cafe	1
Storage	3
Copy/Work	2
IT Room	1
Wellness1	

1520

SOUTH



BEACON
PARTNERS

CLAIRE SHEALY

704.607.1984 (c) | 704.926.1409 (d)

claire@beacondevelopment.com