

# SOUTHBOROUGH

+/-1,473 SF OFFICE SPACE AVAILABLE  
2201 SOUTH BLVD | SUITE 410 | CHARLOTTE, NC 28203



## FEATURES:

### +/-1,473 SF

- Move-in ready with three private offices
- Class A building with retail on the first floor
- Free surface and covered parking
- Within walking distance to the East Blvd. light rail station
- Five Guys, Poppy's Bagels, and Wine Loft on first floor
- Adjacent to Lowe's Home Improvement and Publix
- Floor to ceiling glass
- Less than 5 minutes from I-77, I-277 and Charlotte CBD
- Numerous retail and restaurants within walking distance
- Beacon Partners owns, leases and manages over 1 million SF in the Midtown and South End areas
- Space will be available August 1, 2019



FOR MORE INFORMATION, CONTACT:

**KRISTY VENNING**

704.926.1409 (d)

[kristy@beacondevelopment.com](mailto:kristy@beacondevelopment.com)

500 East Morehead Street | Suite 200 | Charlotte, NC 28202

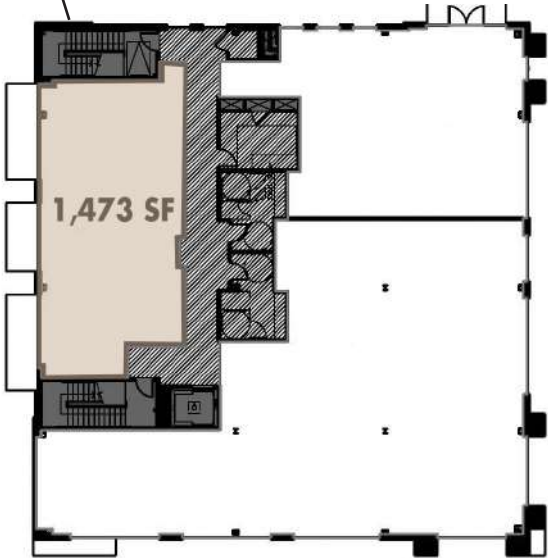
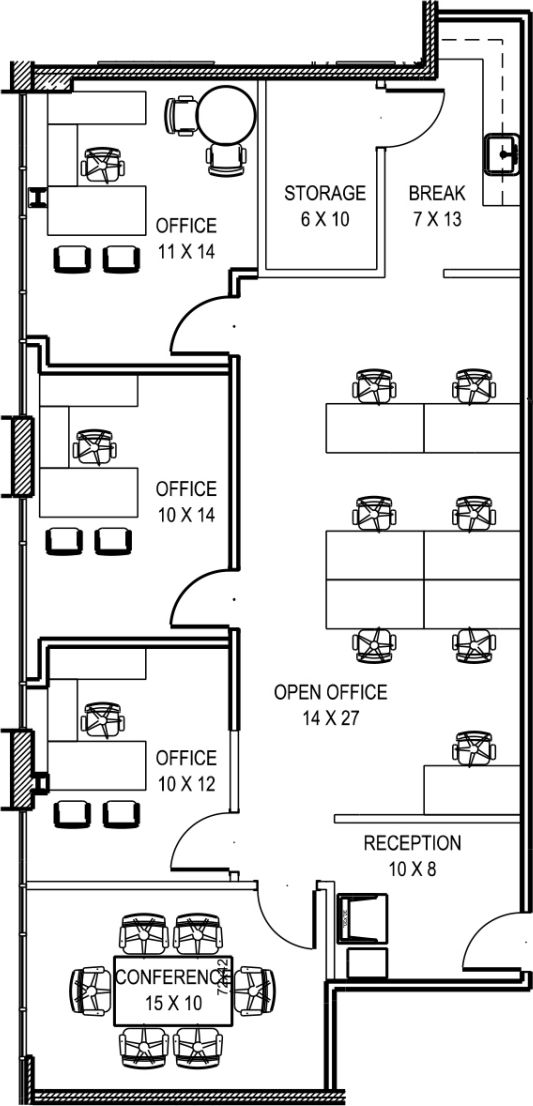
[www.beacondevelopment.com](http://www.beacondevelopment.com)



# SOUTHBOROUGH

+/-1,473 SF OFFICE SPACE AVAILABLE  
2201 SOUTH BLVD | SUITE 410 | CHARLOTTE, NC 28203

FLOOR PLAN:



FOR MORE INFORMATION, CONTACT:

**KRISTY VENNING**  
704.926.1409 (d)  
[kristy@beacondevelopment.com](mailto:kristy@beacondevelopment.com)  
500 East Morehead Street | Suite 200 | Charlotte, NC 28202  
[www.beacondevelopment.com](http://www.beacondevelopment.com)



All information regarding the property was obtained from sources deemed reliable but no warranty or representation is made of the accuracy thereof, and the property is subject to prior sale, lease or withdrawal.