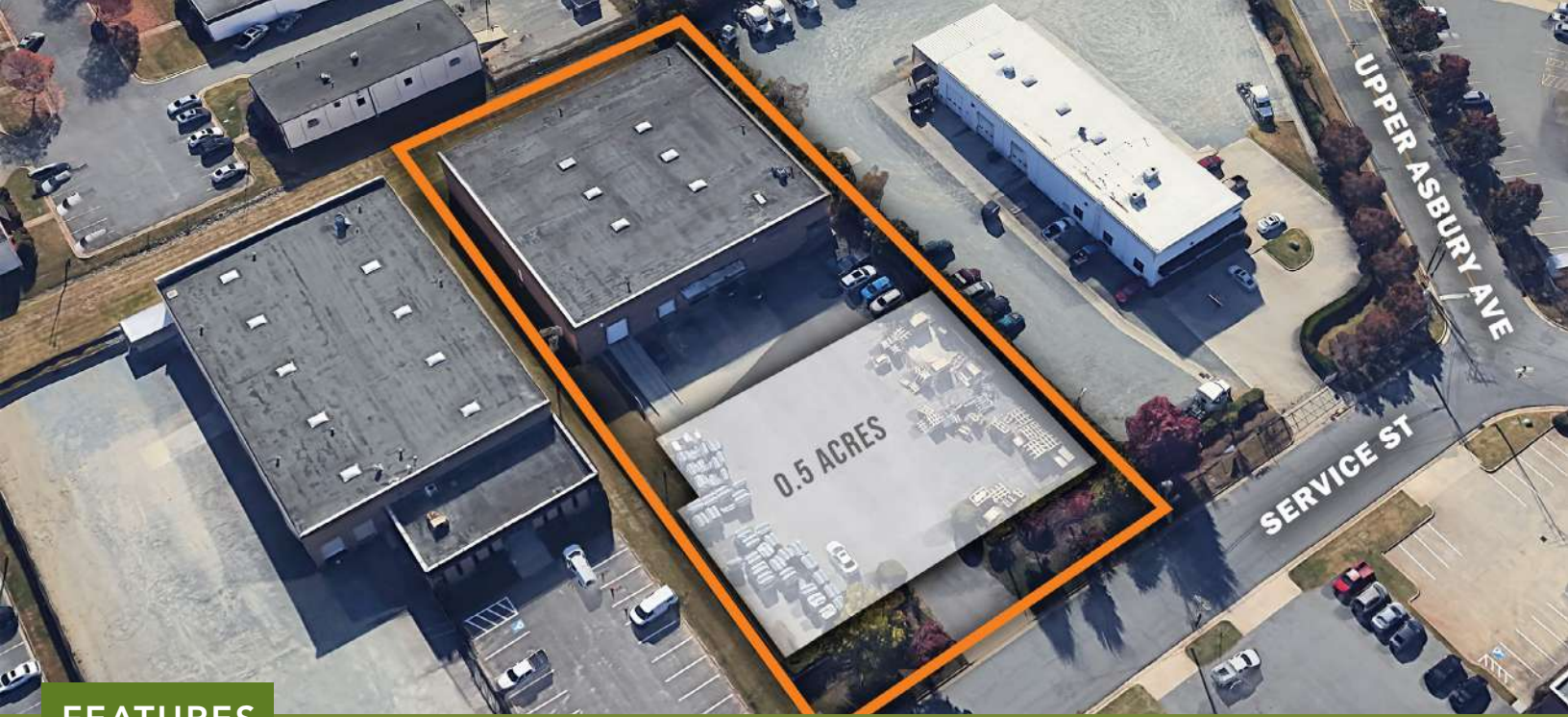


# ±15,376 SF SINGLE TENANT FACILITY FOR LEASE

ATANDO BUSINESS PARK | 3320 SERVICE STREET | CHARLOTTE, NC 28206



## FEATURES

- 15,376 SF, free-standing facility with 1,970 SF of office
- Two (2) 8' x 10' and One (1) 8' x 8' Dock-High Doors
- One (1) grade level 10' x 12' Drive-In Door
- 0.5 acres of secured outdoor storage
- 17' ceiling height
- The entrance from I-77 at Atando/LaSalle (Exit 12), offers direct access into the park
- Ideal Central Charlotte location:
  - ±1.0 mile UPS facility
  - ±1.3 miles to I-77
  - ±1.3 miles to I-85
  - ±3.5 miles to Charlotte's Central Business District
  - ±10 miles to Charlotte Douglas International Airport



FOR MORE INFORMATION, CONTACT:

**ALEX HABECKER**

704.926.1412 (o) | 407.473.0051 (m) | [alex@beacondevelopment.com](mailto:alex@beacondevelopment.com)

500 East Morehead Street | Suite 200 | Charlotte, NC 28202

[www.beacondevelopment.com](http://www.beacondevelopment.com)





# ±15,376 SF SINGLE TENANT FACILITY FOR LEASE

ATANDO BUSINESS PARK | 3320 SERVICE STREET | CHARLOTTE, NC 28206

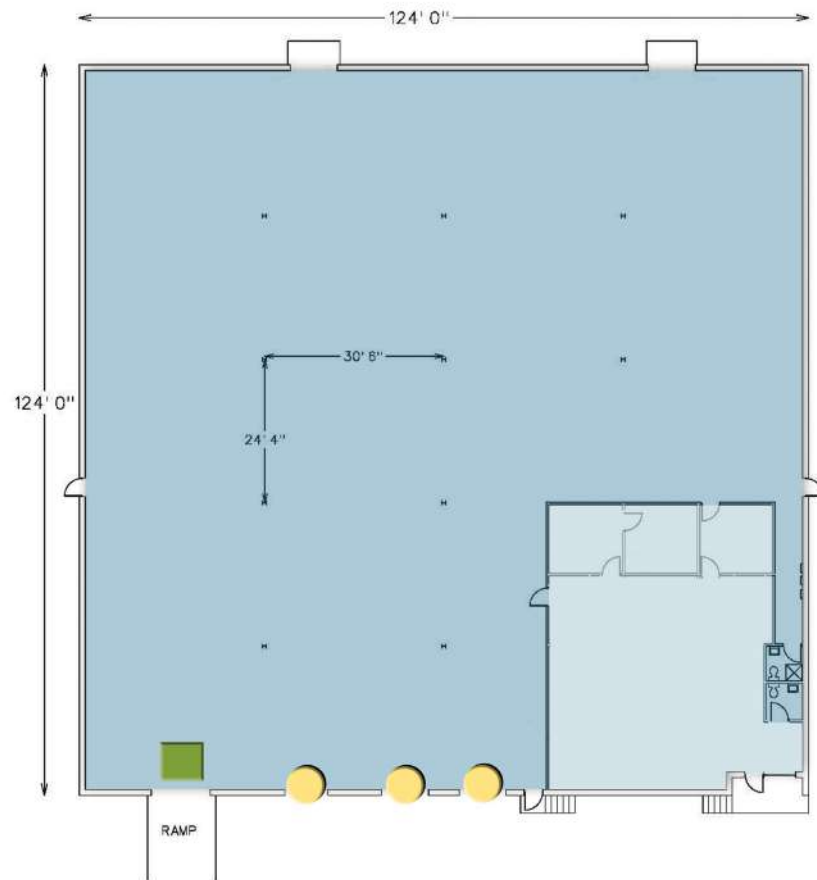
## AERIAL



- Atando Business Park
- Three (3) Dock-High Doors
- One (1) Drive-In Door



## BUILDING PLAN



FOR MORE INFORMATION, CONTACT:

**ALEX HABECKER**

704.926.1412 (o) | 407.473.0051 (m) | [alex@beacondevelopment.com](mailto:alex@beacondevelopment.com)

500 East Morehead Street | Suite 200 | Charlotte, NC 28202

[www.beacondevelopment.com](http://www.beacondevelopment.com)

