

# ±4,500 SF SINGLE TENANT FACILITY | CENTRAL CHARLOTTE

ATANDO BUSINESS PARK | 3425 ASBURY AVENUE | CHARLOTTE, NC 28206



## FEATURES:

- ±4,500 SF free-standing, single tenant facility
- ±1,650 SF office
- I-2 zoning
- Fenced, secured outdoor storage
- One (1) 10' x 10' Dock High Doors
- Locally owned and managed professional park, with direct access from I-77 at Atando Ave. / LaSalle St. (Exit 12) and I-85 (Exit 40)
- Central Charlotte location with immediate access to I-85 (via N. Graham St./Exit 40), the CBD, and UPS facility



FOR MORE INFORMATION, CONTACT:

**ALEX HABECKER**

704.926.1412 (o) | 407.473.0051 (m) | [alex@beacondevelopment.com](mailto:alex@beacondevelopment.com)

500 East Morehead Street | Suite 200 | Charlotte, NC 28202

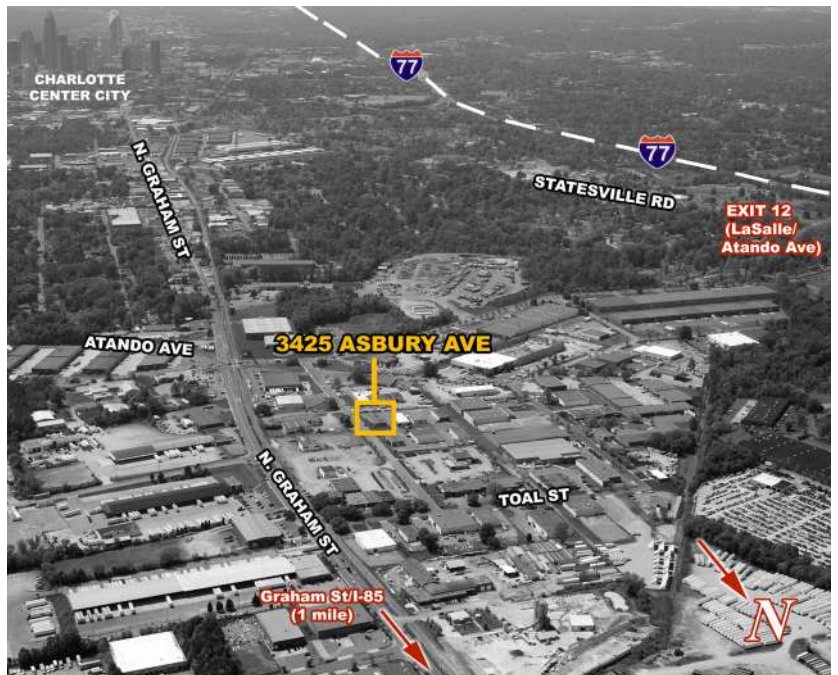
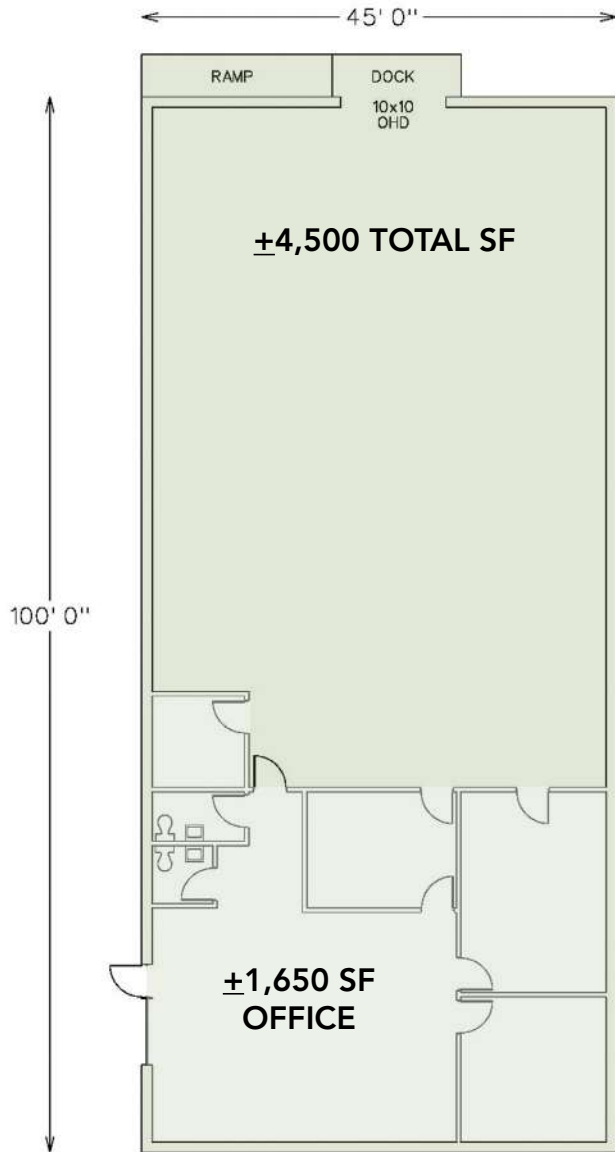
[www.beacondevelopment.com](http://www.beacondevelopment.com)



# ±4,500 SF SINGLE TENANT FACILITY | CENTRAL CHARLOTTE

ATANDO BUSINESS PARK | 3425 SERVICE STREET | CHARLOTTE, NC 28206

## BUILDING PLAN:



FOR MORE INFORMATION, CONTACT:

**ALEX HABECKER**

704.926.1412 (o) | 407.473.0051 (m) | [alex@beacondevelopment.com](mailto:alex@beacondevelopment.com)

500 East Morehead Street | Suite 200 | Charlotte, NC 28202

[www.beacondevelopment.com](http://www.beacondevelopment.com)

