

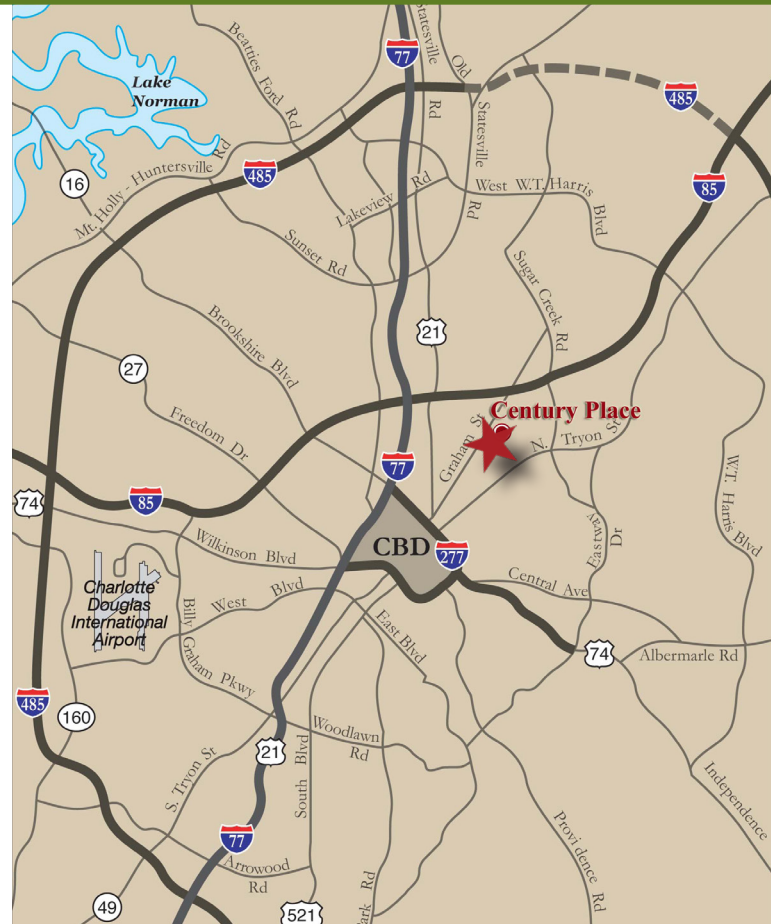
±20,000 - 60,000 SF WAREHOUSE FOR LEASE

ATANDO BUSINESS PARK | 3640 - 3624 CENTURY PLACE | CHARLOTTE, NC 28206



FEATURES:

- ±60,000 total square feet available
- ±1,316 - 4,747 SF office
- Eight (8) 10 x 10 Dock High Doors
- Four (4) 10 x 10 Dock High Doors with levelers
- One (1) 10 x 10 Drive-In Door
- I-2 Zoning
- Front-load distribution facility; 20' clear height
- Ideal Central Charlotte location:
 - ±1.0 miles UPS facility
 - ±1.0 miles to I-77
 - ±1.0 miles to I-85
 - ±2.0 miles to Charlotte's Central Business District
 - ±10 miles to Charlotte Douglas International Airport



FOR MORE INFORMATION, CONTACT:

JACK RIAZZI

704.926.1412 | jack@beacondevelopment.com

500 East Morehead Street | Suite 200 | Charlotte, NC 28202

www.beacondevelopment.com

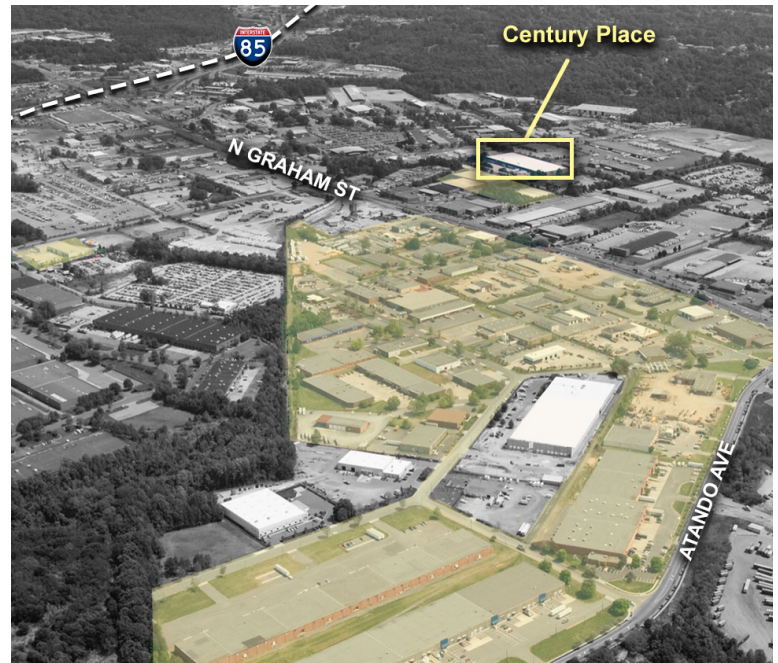
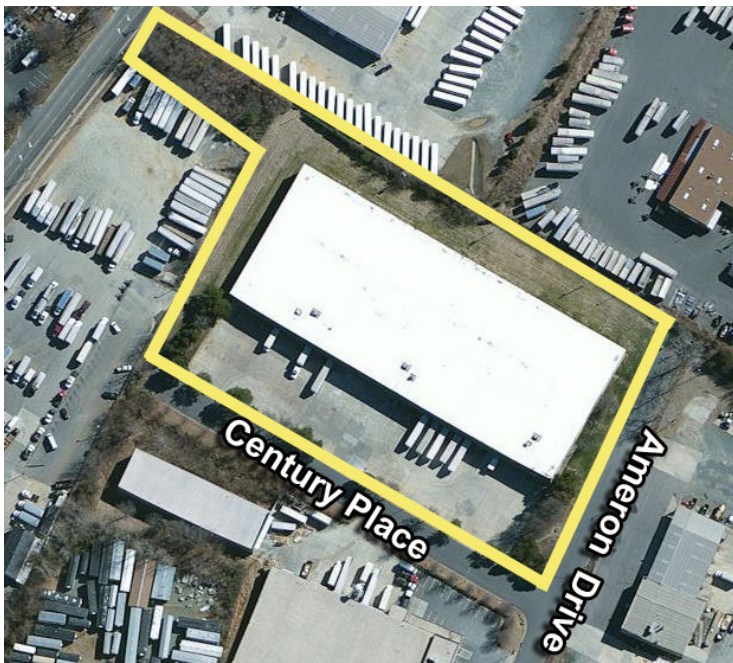
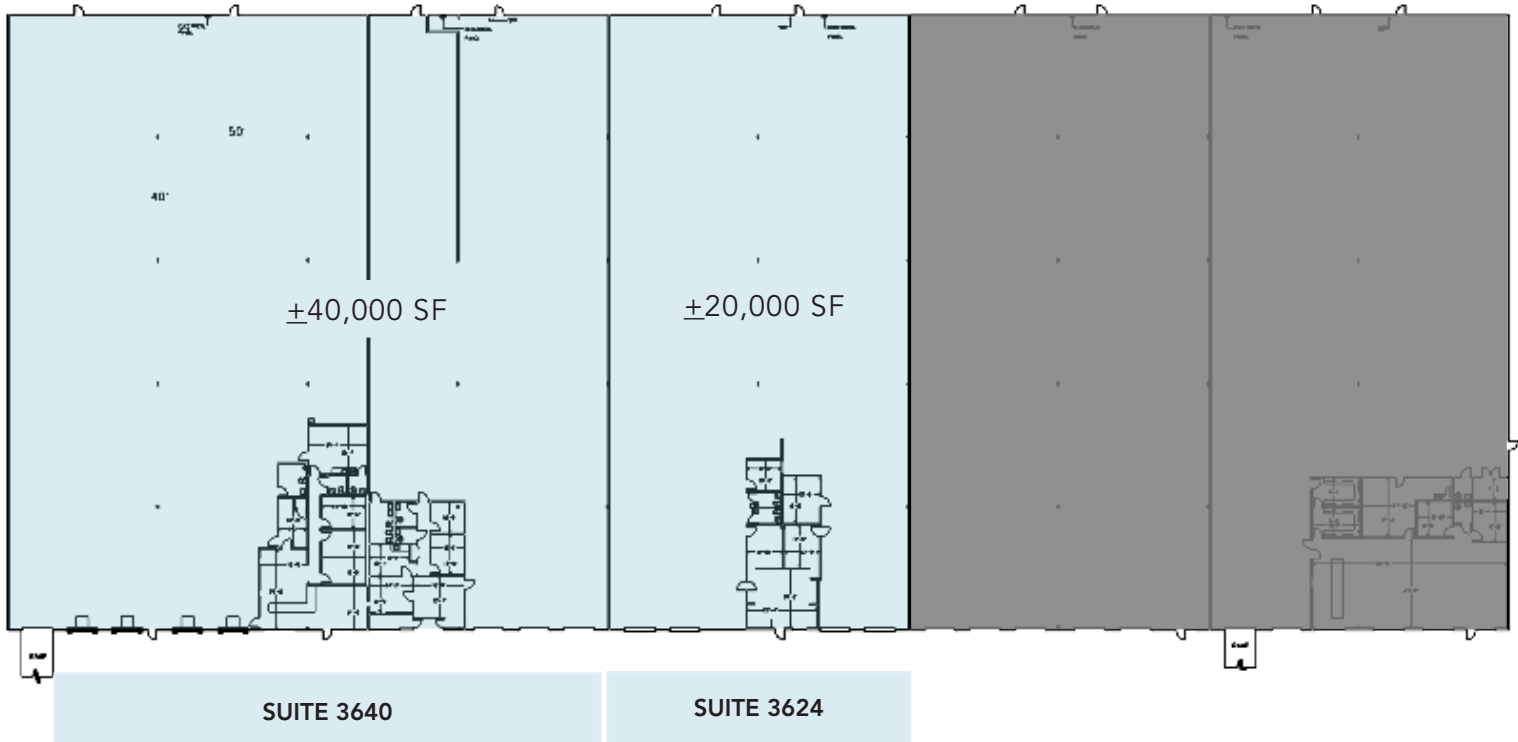


All information regarding the property was obtained from sources deemed reliable but no warranty or representation is made of the accuracy thereof, and the property is subject to prior sale, lease or withdrawal.

±20,000 - 60,000 SF WAREHOUSE FOR LEASE

ATANDO BUSINESS PARK | 3640 - 3624 CENTURY PLACE | CHARLOTTE, NC 28206

BUILDING PLAN:



FOR MORE INFORMATION, CONTACT:

JACK RIAZZI

704.926.1412 | jack@beacondevelopment.com

500 East Morehead Street | Suite 200 | Charlotte, NC 28202

www.beacondevelopment.com



All information regarding the property was obtained from sources deemed reliable but no warranty or representation is made of the accuracy thereof, and the property is subject to prior sale, lease or withdrawal.