

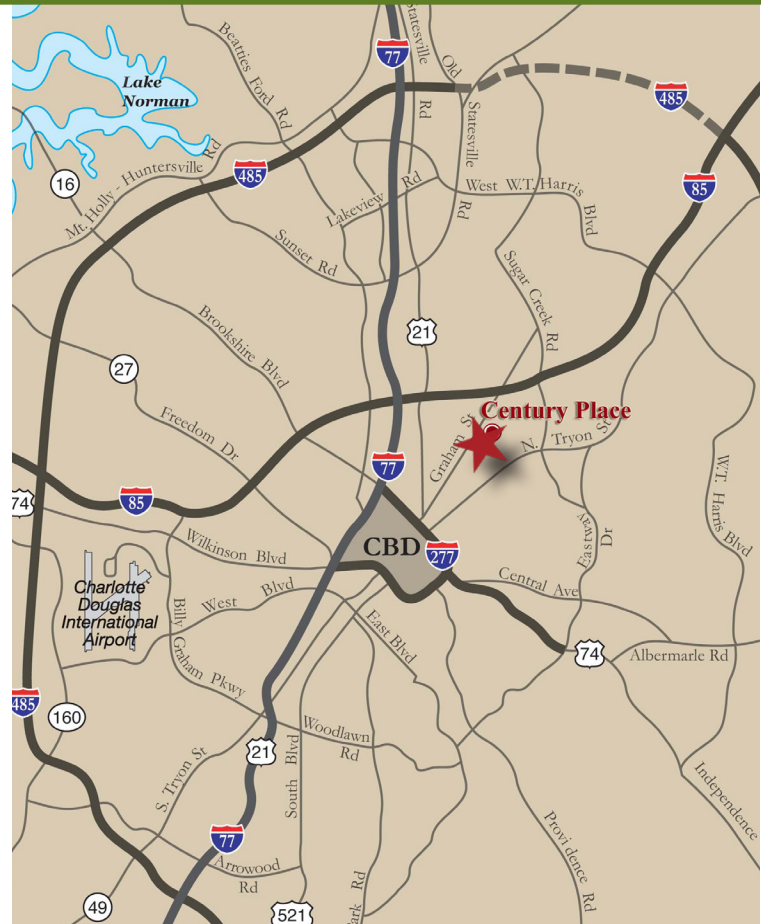
# ±20,000 - 40,000 SF WAREHOUSE FOR LEASE

ATANDO BUSINESS PARK | 3640 CENTURY PLACE | CHARLOTTE, NC 28206



## FEATURES:

- ±40,000 total square feet available
- ±3,431 SF office
- Four (4) 10 x 10 Dock High Doors with levelers
- Three (3) 10 x 10 Dock High Doors
- One (1) 10 x 10 Drive-In Door
- I-2 Zoning
- Front-load distribution facility; 20' clear height
- Ideal Central Charlotte location:
  - ±1.0 miles UPS facility
  - ±1.0 miles to I-77
  - ±1.0 miles to I-85
  - ±2.0 miles to Charlotte's Central Business District
  - ±10 miles to Charlotte Douglas International Airport



FOR MORE INFORMATION, CONTACT:

**JACK RIAZZI**

**704.926.1412 | [jack@beacondevelopment.com](mailto:jack@beacondevelopment.com)**

500 East Morehead Street | Suite 200 | Charlotte, NC 28202

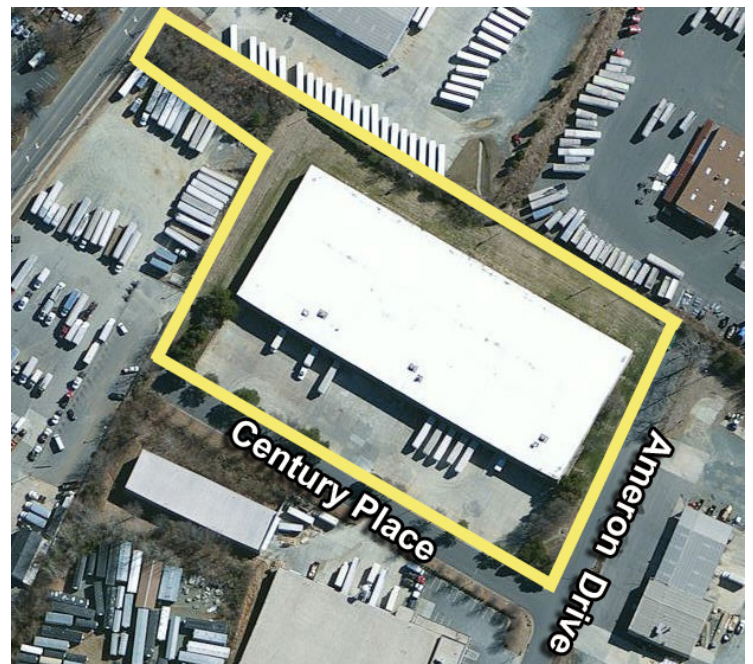
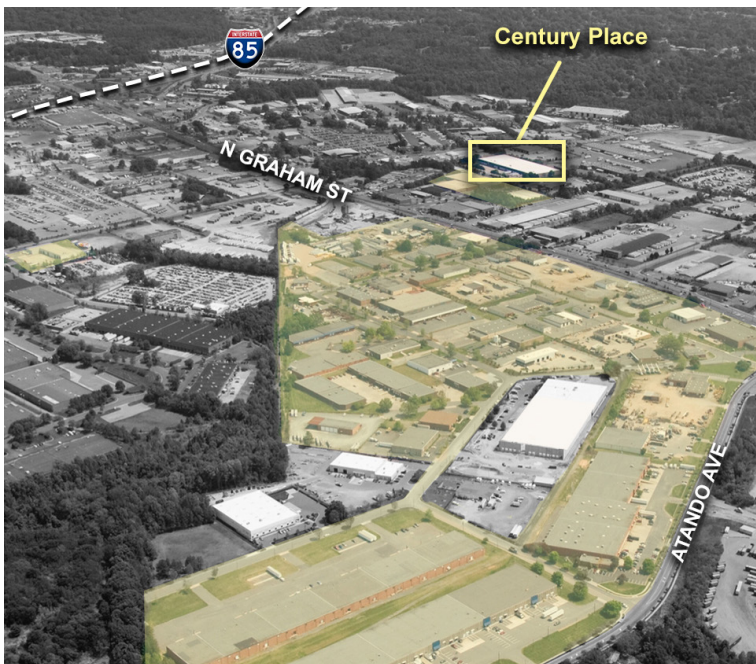
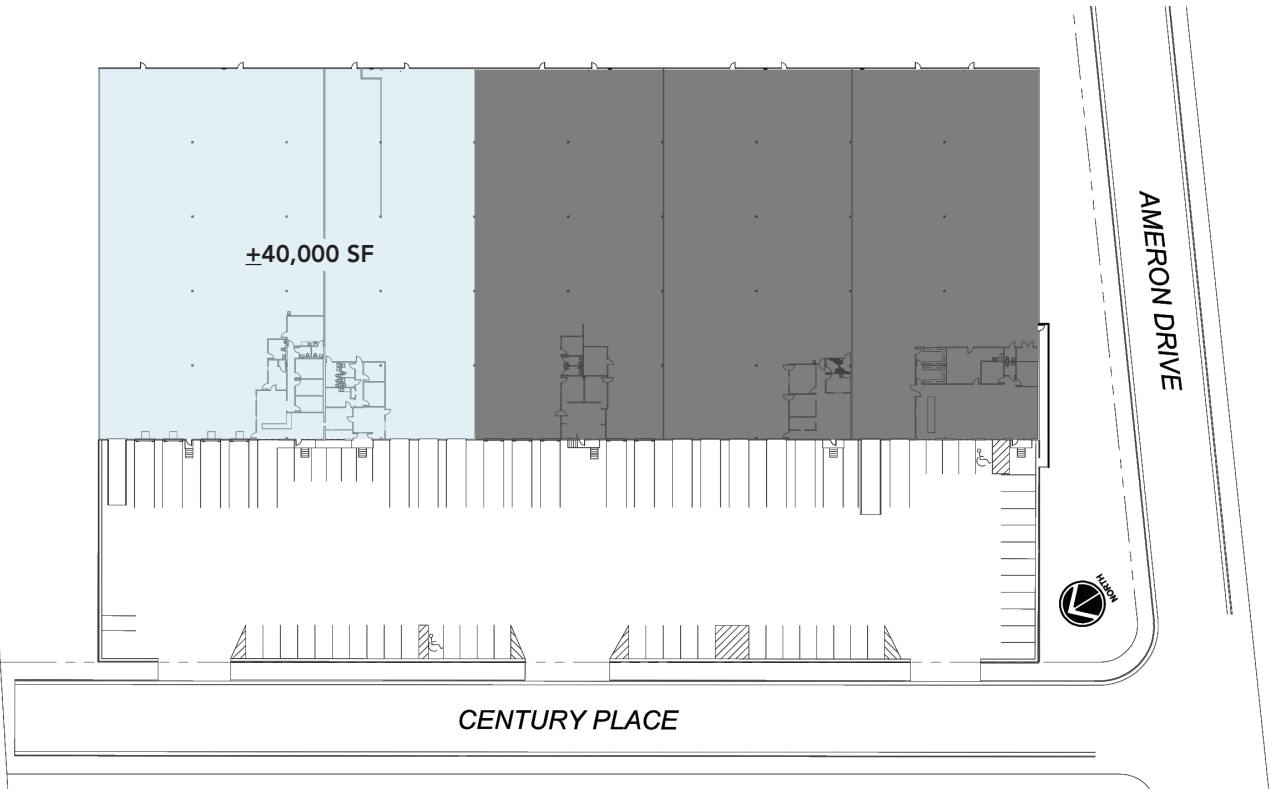
[www.beacondevelopment.com](http://www.beacondevelopment.com)



All information regarding the property was obtained from sources deemed reliable but no warranty or representation is made of the accuracy thereof, and the property is subject to prior sale, lease or withdrawal.

# ±20,000 - 40,000 SF WAREHOUSE FOR LEASE

ATANDO BUSINESS PARK | 3640 CENTURY PLACE | CHARLOTTE, NC 28206



FOR MORE INFORMATION, CONTACT:

**JACK RIAZZI**

**704.926.1412 | [jack@beacondevelopment.com](mailto:jack@beacondevelopment.com)**

500 East Morehead Street | Suite 200 | Charlotte, NC 28202

[www.beacondevelopment.com](http://www.beacondevelopment.com)



All information regarding the property was obtained from sources deemed reliable but no warranty or representation is made of the accuracy thereof, and the property is subject to prior sale, lease or withdrawal.