

INFILL FLEX/WAREHOUSE



Property Highlights

Call for lease rate

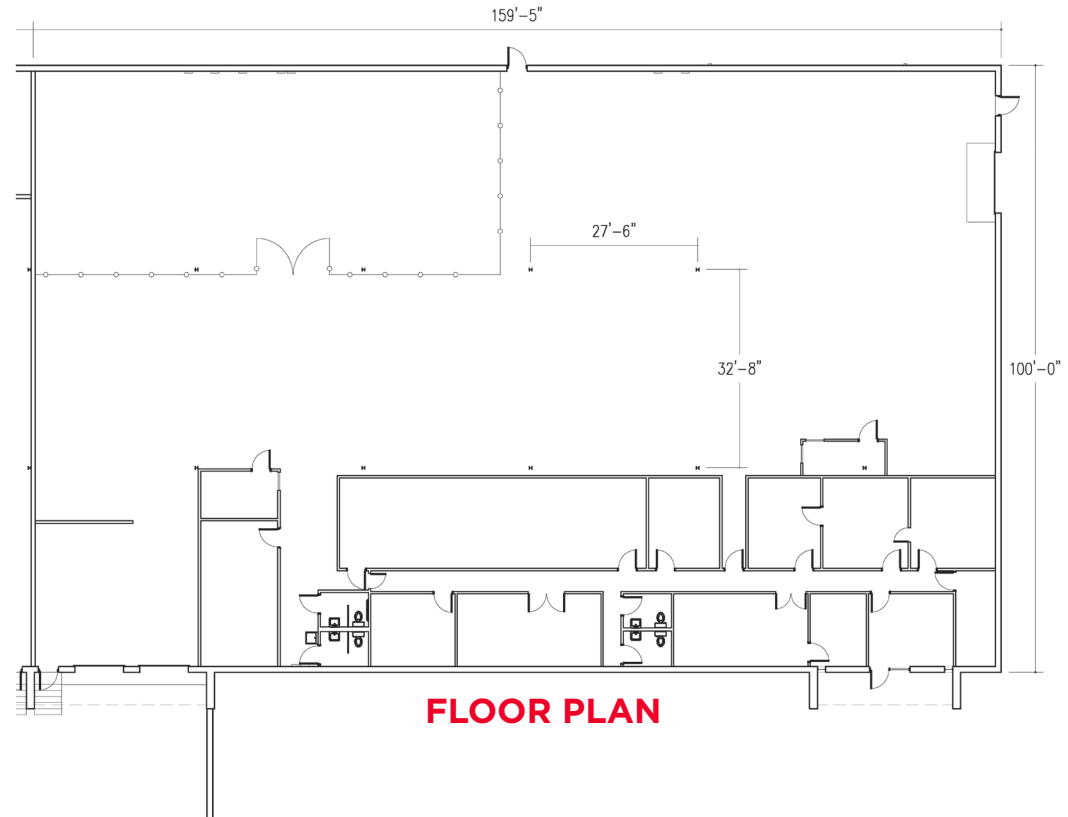
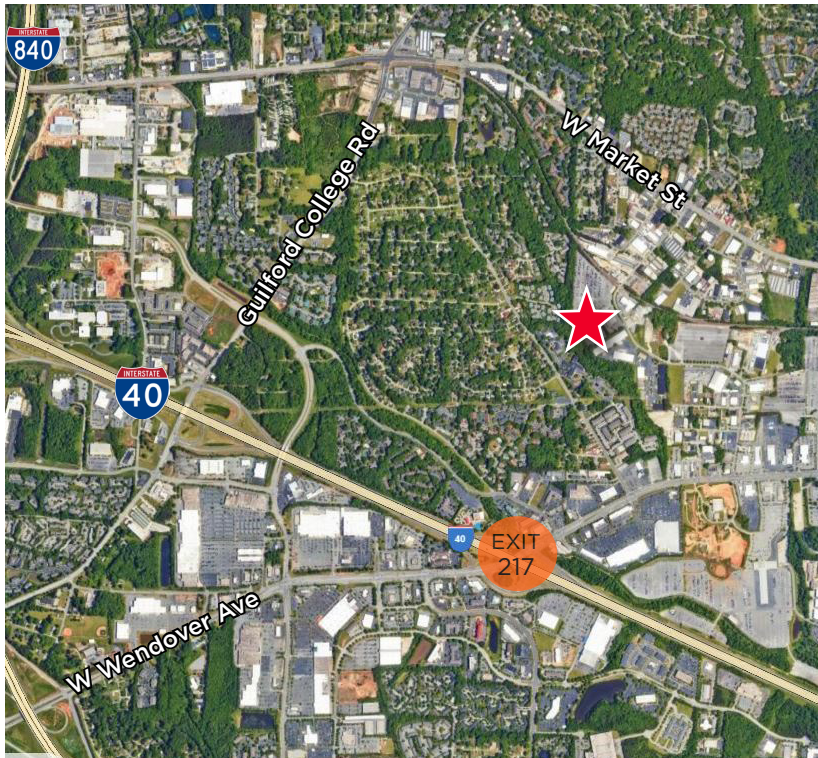
- **+/- 16,000 SF**
- Two (2) 8'x8' Dock Doors
- One (1) 12'x 12' Drive-In Door
- Masonry construction
- Ample parking
- Professionally managed
- Space will accommodate a variety of uses including infill warehouse, showroom, sales counter/distribution, bulk & flex warehouse and light manufacturing/assembly
- Outstanding location off Wendover Ave with great proximity to I-40 (1.6 miles)
- Electrical serviced by Duke Energy
- Piedmont Natural Gas
- City of Greensboro Water/ Sewer
- Central Greensboro location with great access to amenities

Jason Ofsanko, SIOR
Managing Director
+1 336 812 3300
jason.ofsanko@cushwake.com

Jordan Mitchell
Director
+1 336 201 0495
jordan.mitchell@cushwake.com

William Mann
Beacon Partners
+1 704 926 1407
william@beacondevelopment.com





Jason Ofsanko, SIOR
Managing Director
+1 336 812 3300
jason.ofsanko@cushwake.com

Jordan Mitchell
Director
+1 336 201 0495
jordan.mitchell@cushwake.com

William Mann
Beacon Partners
+1 704 926 1407
william@beacondevelopment.com

628 Green Valley Road, Suite 202
Greensboro, NC 27408 | USA
Main +1 336 668 9999
Fax +1 336 668 0888
cushmanwakefield.com