



East Morehead
Charlotte, NC



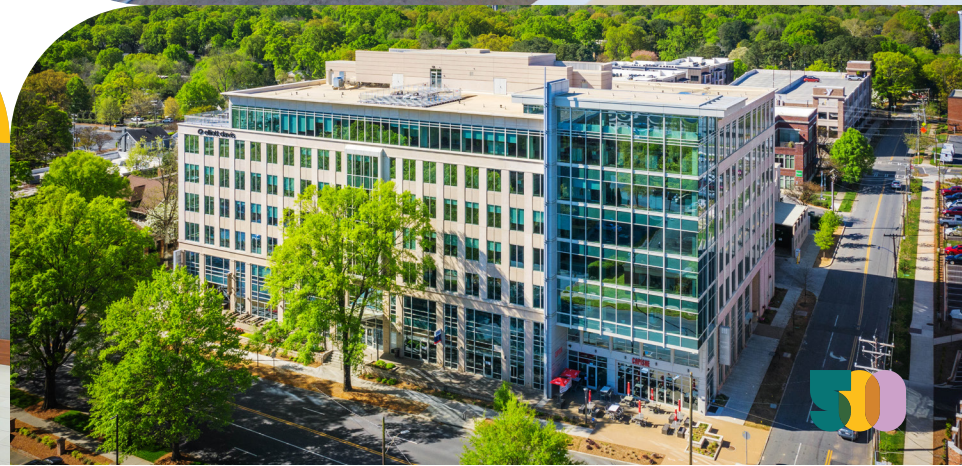
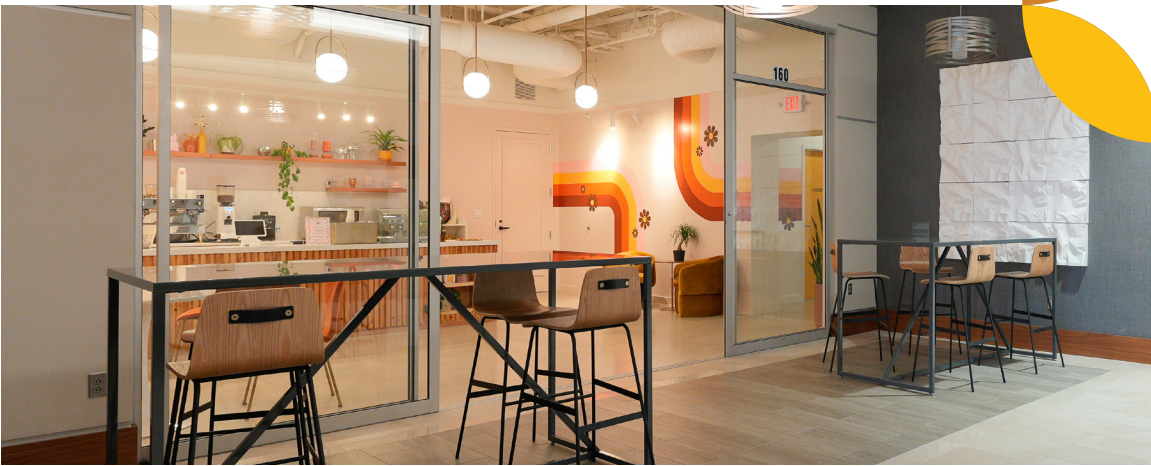
Innovation. Charm. Access.
Discover more...





Discover More *than just an address*

Located on one of Charlotte's iconic tree-lined streets, *500 East Morehead* sits at the crossroads of South End's creative energy and Dilworth's historic character. Spanning seven stories and 180,000 SF of Class A office and retail space, this premier property captures everything that makes the Charlotte market an exceptional place to work and thrive.



Discover More *amenities*

Conference Room - Rendering



Dedicated Building Conference Center

Complete with pre-function meeting space and an inviting outdoor terrace

Attached Parking Deck

With three points of entry, direct access across multiple floors, and a 3 per 1,000 SF parking ratio



Prefunction - Rendering



Fitness Center - Rendering



***Building
Fitness Center***

And locker rooms and showers

***Covered
Rooftop Patio***

Complete with access to a refrigerator, sink, and restroom

Covered Rooftop Patio



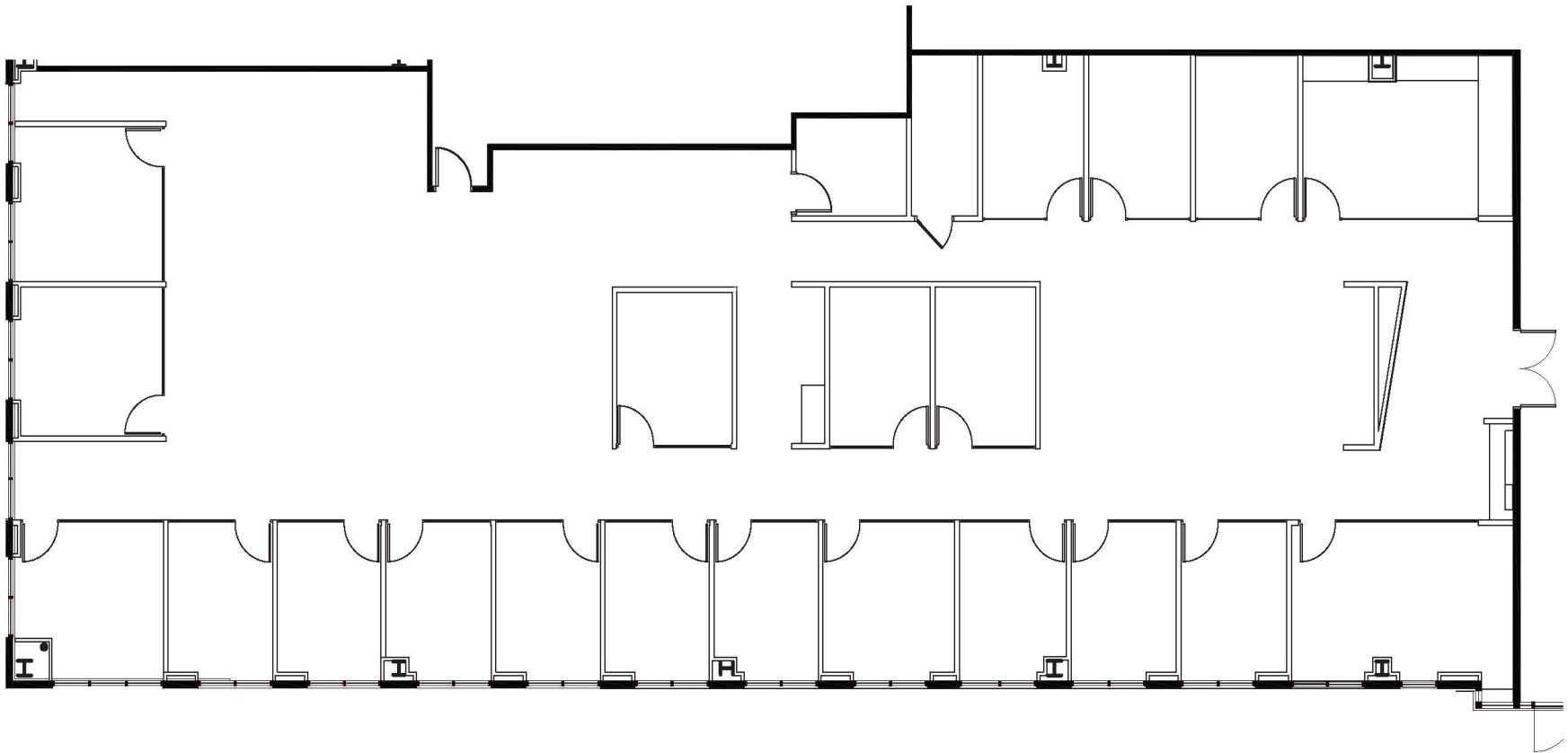
\$2M

Investment in building amenities in 2026



Discover Suite 375

±7,530 SF



Claire Shealy Lovette

(c) 704.607.1984

(d) 704.926.1409

(e) claire@beacondevelopment.com

Erin Shaw

(c) 914.924.1826

(d) 704.926.1414

(e) erin@beacondevelopment.com





Two blocks

to Charlotte's LYNX Light Rail Blue Line at Carson Station, providing 19 miles of North-South rail access throughout greater Charlotte



A short walk

to two of Charlotte's most active green spaces, the Charlotte Rail Trail and Little Sugar Creek Greenway



A 15 minute drive

to Charlotte Douglas International Airport



Less than one mile

from both South End and Uptown Charlotte, with convenient access to I-77 and I-277

Amenity Rich Location:



On Site



On Site



in Lobby



Across the Street





East Morehead
Charlotte, NC

Claire Shealy Lovette

(c) 704.607.1984
(d) 704.926.1409
(e) claire@beacondevelopment.com

Erin Shaw

(c) 914.924.1826
(d) 704.926.1414
(e) erin@beacondevelopment.com

Beacon Partners is a commercial real estate firm specializing in the development, acquisition, and operation of industrial, office and mixed-use properties. Beacon leases, owns or manages more than 14.5+ million square feet of space throughout the Carolinas.

