



DISCOVER A BUILDING WHERE CLEAN, OPEN
FLOOR PLANS, CHARMING NEIGHBORHOODS
AND EXCEPTIONAL ACCESS GIVES YOU MORE.
DISCOVER 500 EAST MOREHEAD.



[CLICK FOR
VIDEO](#)

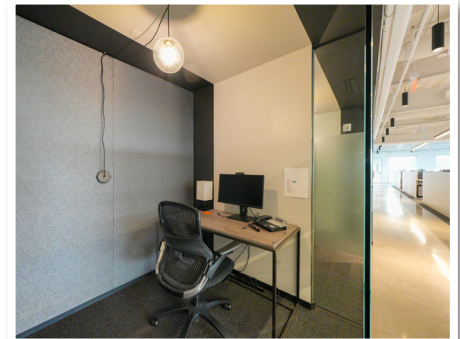




DISCOVER MORE. EXPERIENCE MORE. CONNECT MORE.

Situated on one of Charlotte's history tree-lined streets, 500 East Morehead combines the creativity of South End with the historic charm of Dilworth. This state of the art, LEED Silver building was built in 2017 and measures 180,000 SF of Class A office / retail space. All the best attributes of working and living in the Charlotte market intersect in this premier property, which features the following:

- 30,000 SF open floor plates with 15,000 SF of ground floor retail spaces.
- Attached parking deck with three access points and direct access to the building on several floors (3 per 1,000 sf parking ratio)
- Dedicated building conference center, outdoor terrace and fitness center with locker rooms for tenants
- Amenity-laden location with Wildroots Coffee in the lobby, Capishe Italian Kitchen and F45 on-site, as well as the Dowd YMCA across the street.
- Within two blocks of Charlotte's LYNX Light Rail Blue Line (Carson Station) for North-South rail access running 19 miles through greater Charlotte
- Within a short walk to two of Charlotte's most active green spaces, the Charlotte Rail Trail and Little Sugar Creek Greenway
- Less than one mile from Charlotte's South End and Uptown areas and easily accessible to I-77 and I-277
- Within a 15 minutes drive to Charlotte Douglas International Airport



Closely connected to the heart of the city yet replete with neighborhood charms, 500 East Morehead has been carefully designed to ensure work feels less like a job and more like home.

For more information, please contact:

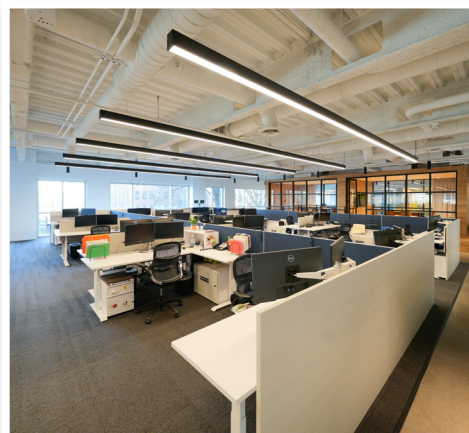
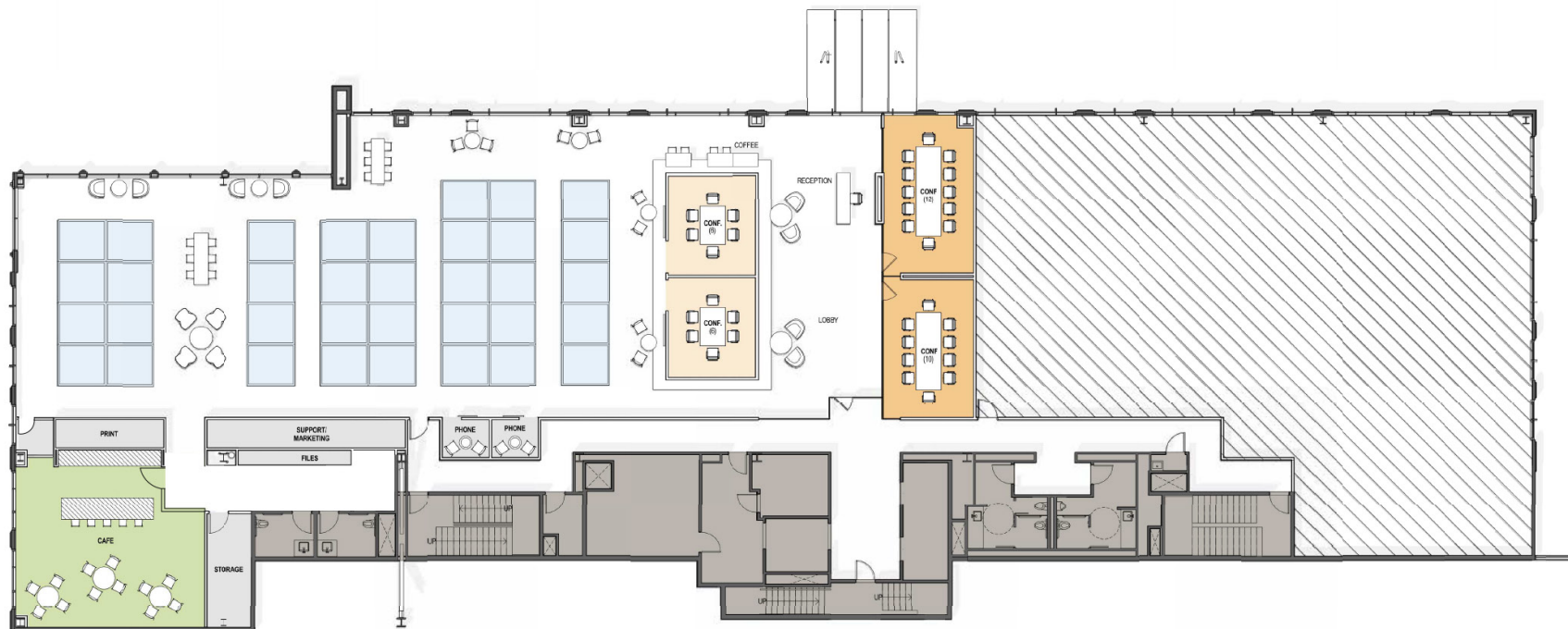
Claire Shealy 704.926.1409 | claire@beacondevelopment.com

www.beacondevelopment.com



IDEAL LOCATION FOR YOUR NEXT OFFICE SPACE
± 10,978 SF AVAILABLE

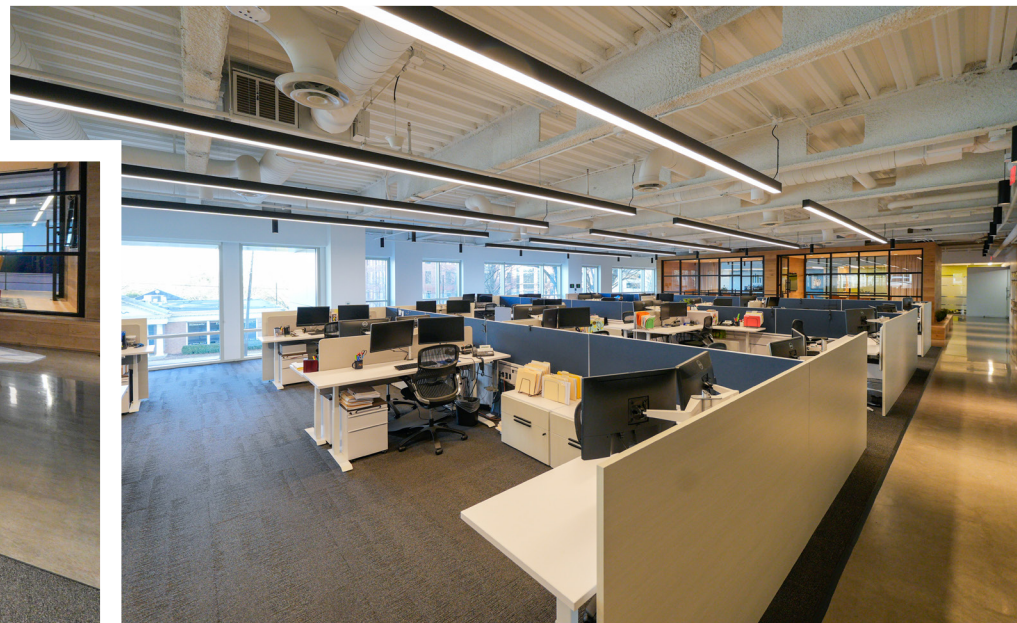
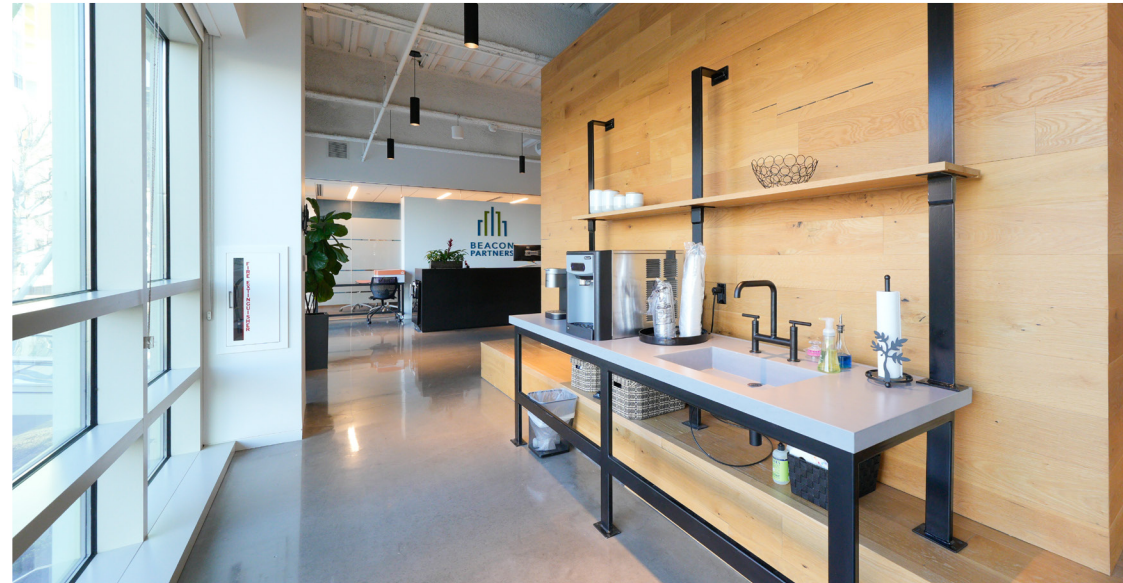
 [CLICK FOR TOUR](#)



For more information, please contact:

Claire Shealy 704.926.1409 | claire@beacondevelopment.com

www.beacondevelopment.com



EXPLORE MORE.

FOOD / BEVERAGE

- | | |
|--------------------------|------------------------|
| 1. Capishe | 11. Queen City Grounds |
| 2. Wildroots | 12. RaiLay Thai |
| 3. Central Coffee | 13. Rhino Market |
| 4. Charlotte Beer Garden | 14. Ruby Sunshine |
| 5. Dilworth Grill | 15. Starbucks |
| 6. Fire Station #2 | 16. Stir |
| 7. Flower Child | 17. Target |
| 8. Fruto Buta | 18. Trader Joes |
| 9. Lincoln Street | 19. Whole Foods |
| 10. North Italia | 20. Wooden Robot |

FITNESS

1. BK Pilates
2. F45 Training
3. Hustle House
4. Orange Theory Fitness
5. Volofit

PARKS & RECREATION

1. Dowd YMCA
2. Pearl Street Park
3. Little Sugar Creek Greenway
4. Baxter Street Park

HOTELS

1. Fairfield Inn by Marriott
2. Grand Bohemian Hotel
3. Hampton Inn Charlotte Uptown
4. Hilton Garden Inn
5. Holiday Inn Express - South End
6. Home 2 Suites
7. Hyatt Place Charlotte Downtown
8. Kimpton at Romare Bearden
9. Le Meridien Charlotte
10. Morehead Inn
11. Omni Charlotte Hotel
12. Residence Inn at Trade & Tryon
13. Ritz Carlton
14. The Westin





FOR MORE INFORMATION, CONTACT

CLAIRE SHEALY



704.926.1409



claire@beacondevelopment.com



www.500EMorehead.com



500 East Morehead Street, Suite 200
Charlotte, NC 28202



704.597.7757



www.beacondevelopment.com