

500



EAST MOREHEAD

DISCOVER A BUILDING WHERE CLEAN, OPEN FLOOR PLANS, CHARMING NEIGHBORHOODS AND EXCEPTIONAL ACCESS GIVES YOU MORE. DISCOVER 500 EAST MOREHEAD.



DISCOVER MORE. EXPERIENCE MORE. CONNECT MORE.

SITUATED ON ONE OF CHARLOTTE'S HISTORY TREE-LINED STREETS, 500 EAST MOREHEAD COMBINES THE CREATIVITY OF SOUTH END WITH THE HISTORIC CHARM OF DILWORTH. THIS SEVEN-STORY, 180,000 SF OF CLASS A OFFICE / RETAIL BUILDING HAS ALL THE BEST ATTRIBUTES OF WORKING AND LIVING IN THE CHARLOTTE MARKET INTERSECT IN THIS PREMIER PROPERTY.

- Attached parking deck with three access points and direct access to the building on several floors (3 per 1,000 sf parking ratio)
- Dedicated building conference center with outdoor terrace, covered roof top patio and fitness center with locker rooms
- Amenity-rich location with Wildroots Coffee in the lobby, Capishe Italian Kitchen and F45 on-site, as well as the Dowd YMCA across the street
- Within two blocks of Charlotte's LYNX Light Rail Blue Line (Carson Station) for North-South rail access running 19 miles through greater Charlotte
- Within a short walk to two of Charlotte's most active green spaces, the Charlotte Rail Trail and Little Sugar Creek Greenway
- Less than one mile from Charlotte's South End and Uptown areas and easily accessible to I-77 and I-277
- Within a 15 minutes drive to Charlotte Douglas International Airport



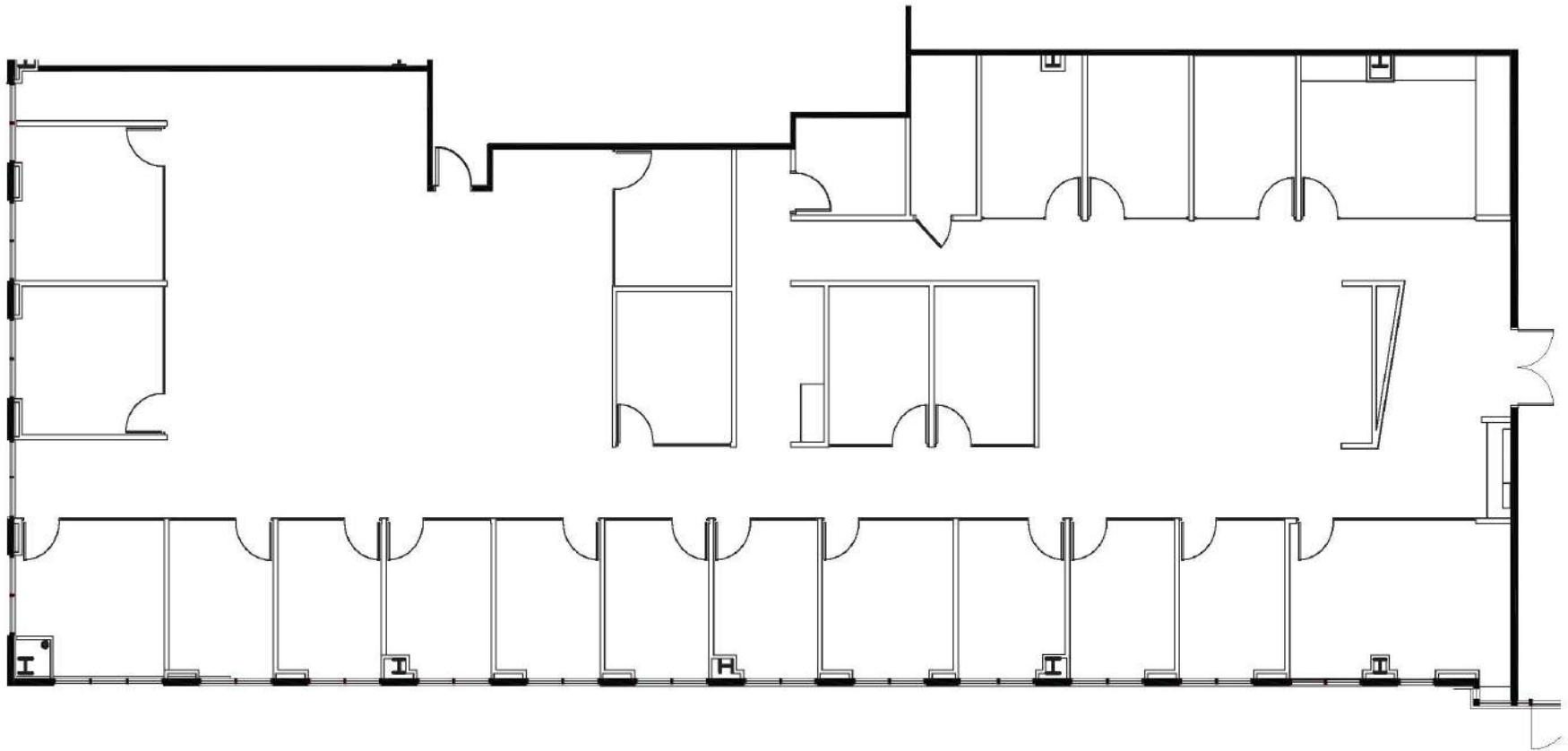
For more information, please contact:

Claire Shealy 704.926.1409 | claire@beacondevelopment.com

www.beacondevelopment.com



SUITE 375
±7,530 SF AVAILABLE



For more information, please contact:

Claire Shealy 704.926.1409 | claire@beacondevelopment.com

www.beacondevelopment.com

500 BUILDING AMENITIES

EAST MOREHEAD





FOR MORE INFORMATION, CONTACT

CLAIRE SHEALY



704.607.1984



claire@beacondevelopment.com



www.500EMorehead.com



3600 South Boulevard, Suite 250
Charlotte, NC 28209



704.597.7757



www.beacondevelopment.com

