

DISCOVER 500 EAST MOREHEAD



KRISTY VENNING
Beacon Partners
kristy@beacondevelopment.com
704.926.1409 (o)
540.420.9351 (m)



Morehead Street View



Lobby



Conference Room



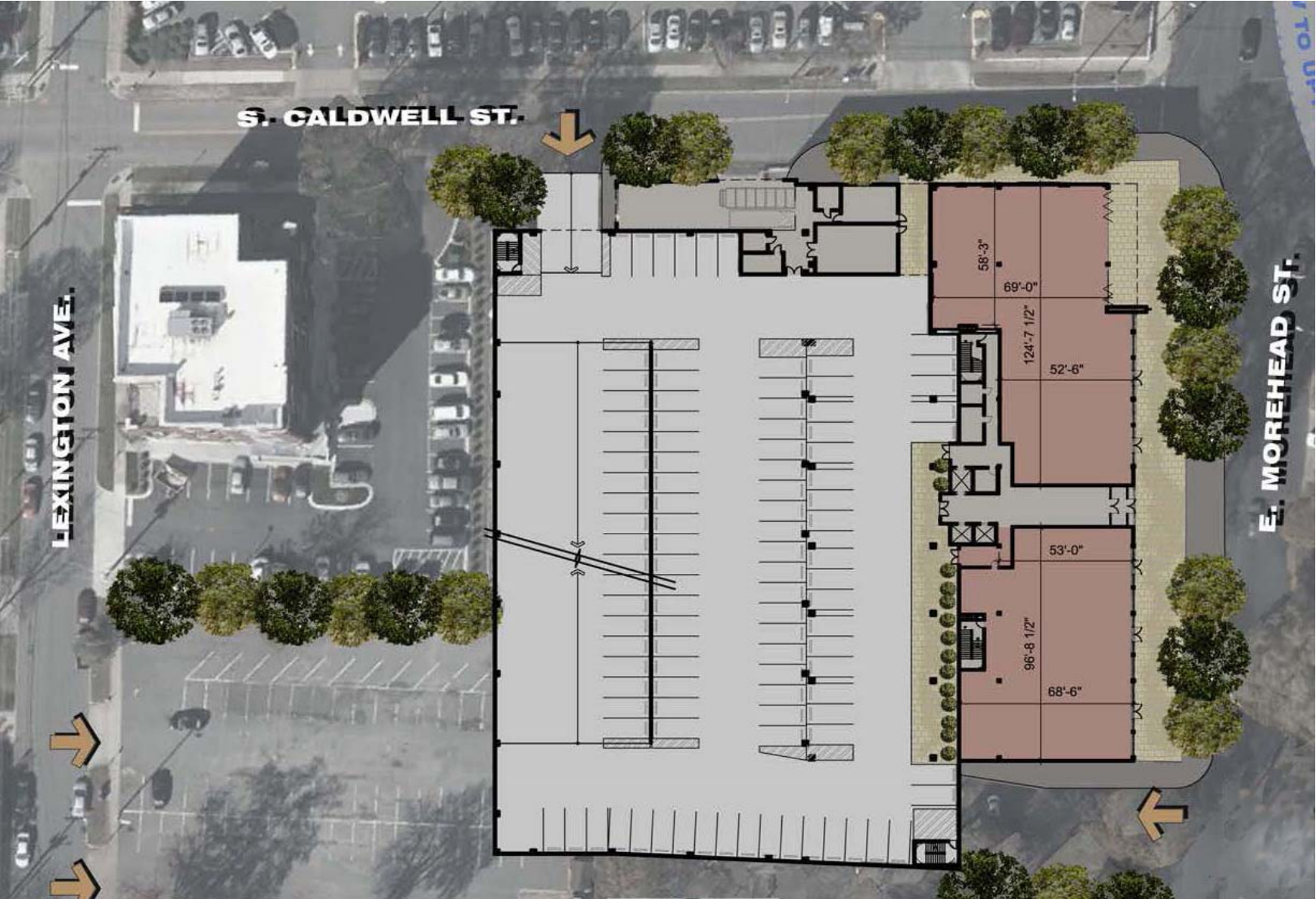
Fitness Center



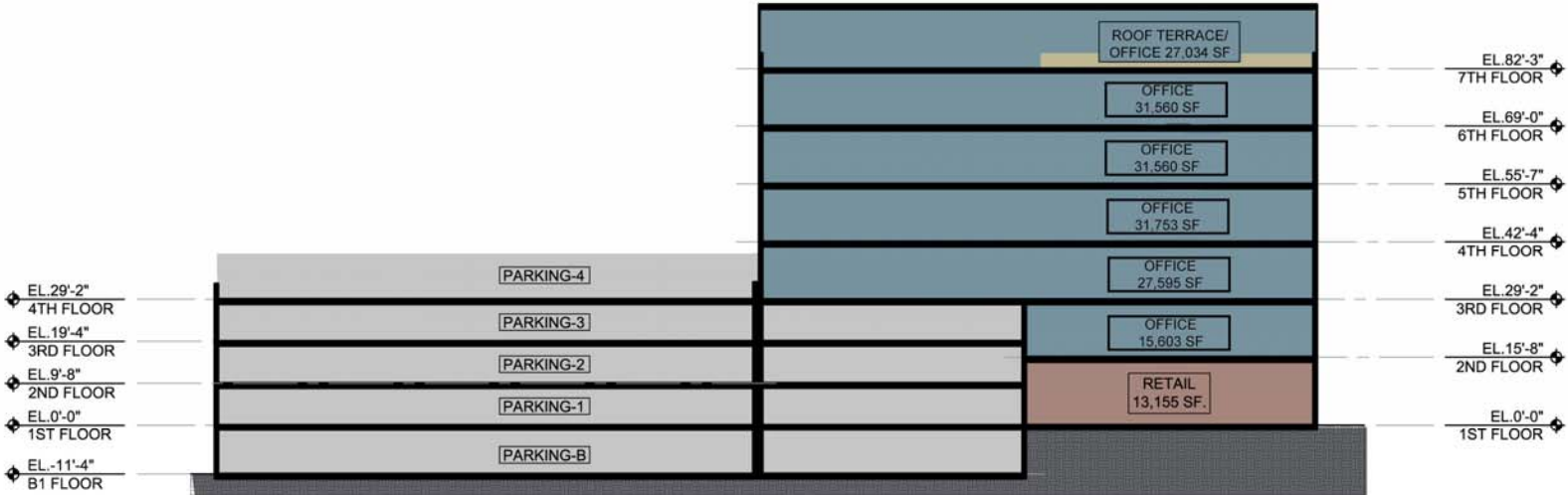
Sky Terrace



Site Plan



Stacking Plan

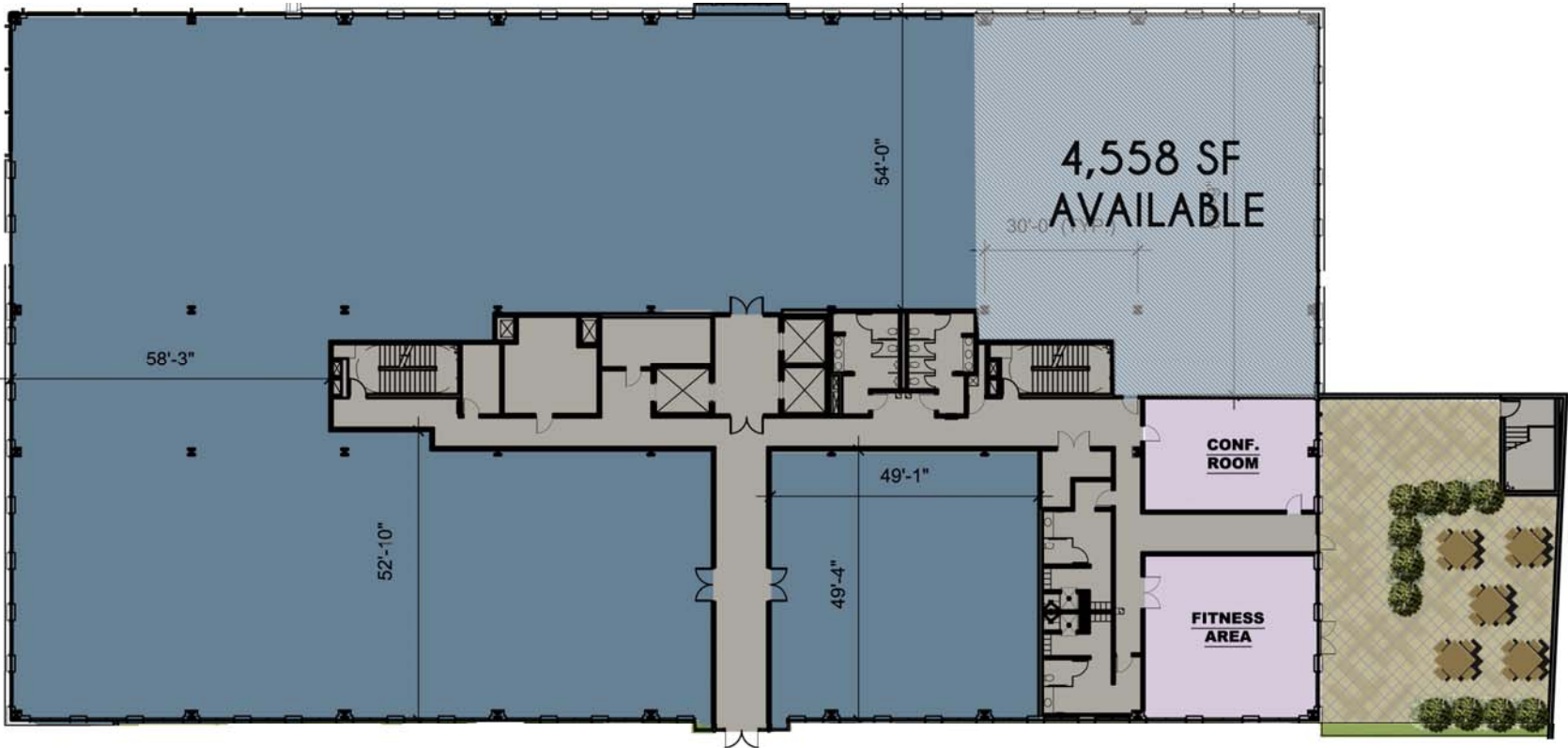




FIRST FLOOR



SECOND FLOOR



THIRD FLOOR





The Packhouse - 11am-until - full service, upscale Southern, serving lunch, dinner, craft cocktails and brunch on weekends. The interior is designed from dismantled packhouses and tobacco barns from Eastern NC and rebuilt inside the restaurant, including brick from the foundation and tin roofs.



Joe and Nosh - 6:30am-9pm - coffee bar with quick service breakfast and lunch. The menu includes cold and grilled sandwiches, soups, salads, smoothies and baked goods. The interior is black and white and pays homage to the Coffee

The Packhouse and Joe and Nosh utilize as many local products as possible and also offer catering services.



Renovated Dowd YMCA: 2018

