

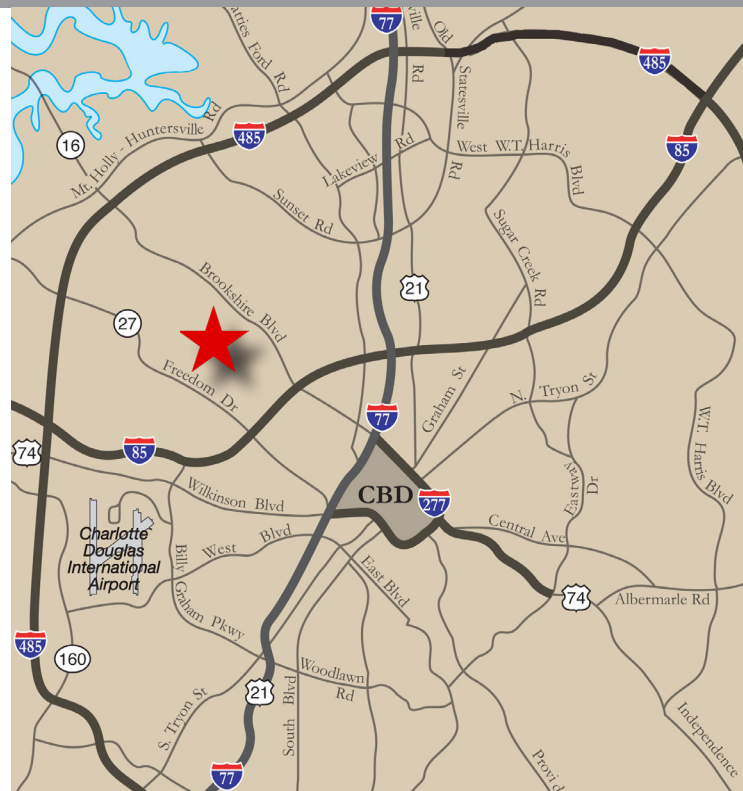
NORTHWEST INDUSTRIAL PARK | ±41,475 SF | FOR LEASE

5101 TERMINAL STREET | SUITE B | CHARLOTTE, NC 28208



FEATURES

- ±41,475 SF front-load facility
- ±3,720 SF office
- I-2 zoning
- Fenced truck court
- ESFR sprinkler system
- 27'-7" clear height
- 37' x 33' column spacing
- 6 dock high doors
- 1 (9' x 10') drive-in door
- Convenient to:
 - I-85 (±2 miles)
 - I-485 (±5 miles)
 - Charlotte Douglas International Airport (±5 miles)



FOR MORE INFORMATION, CONTACT:

TIM ROBERTSON

704.926.1405 (d) 704.654.9880 (m)

tim.robertson@beacondevelopment.com

500 East Morehead Street | Suite 200 | Charlotte, NC 28202

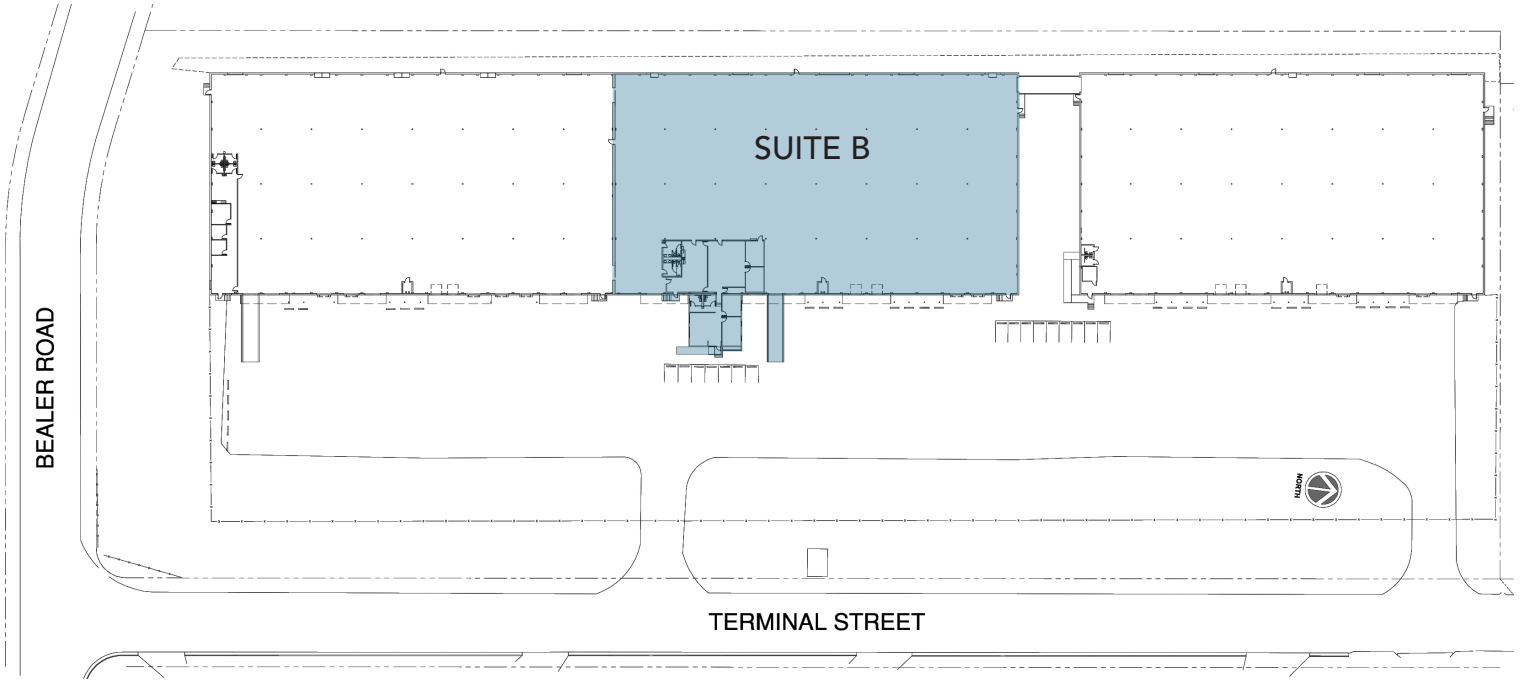
www.beacondevelopment.com



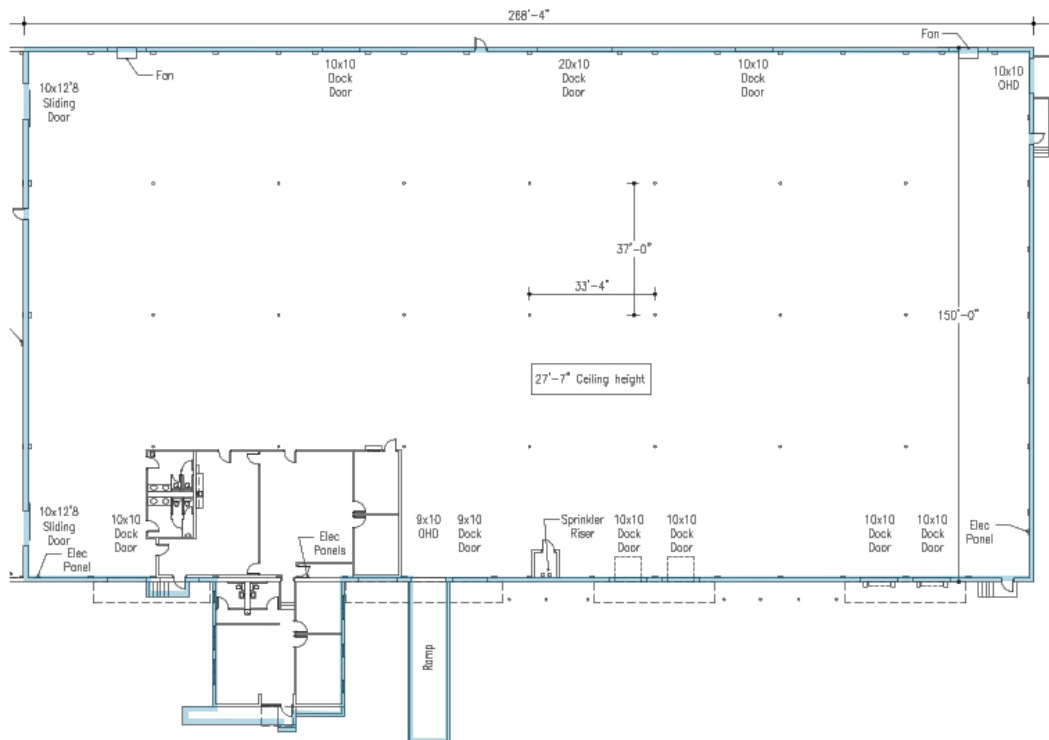
NORTHWEST INDUSTRIAL PARK | ±41,475 SF | FOR LEASE

5101 TERMINAL STREET | SUITE B | CHARLOTTE, NC 28208

SITE PLAN:



FLOOR PLAN:



FOR MORE INFORMATION, CONTACT:

TIM ROBERTSON

704.926.1405 (d) 704.654.9880 (m)

tim.robertson@beacondevelopment.com

500 East Morehead Street | Suite 200 | Charlotte, NC 28202

www.beacondevelopment.com



**BEACON
PARTNERS**

All information regarding the property was obtained from sources deemed reliable but no warranty or representation is made of the accuracy thereof and the property is subject to prior sale, lease or withdrawal.