



610 EAST MOREHEAD

SUITE 101
CHARLOTTE, NC 28202

±1,710 SF OFFICE FOR LEASE

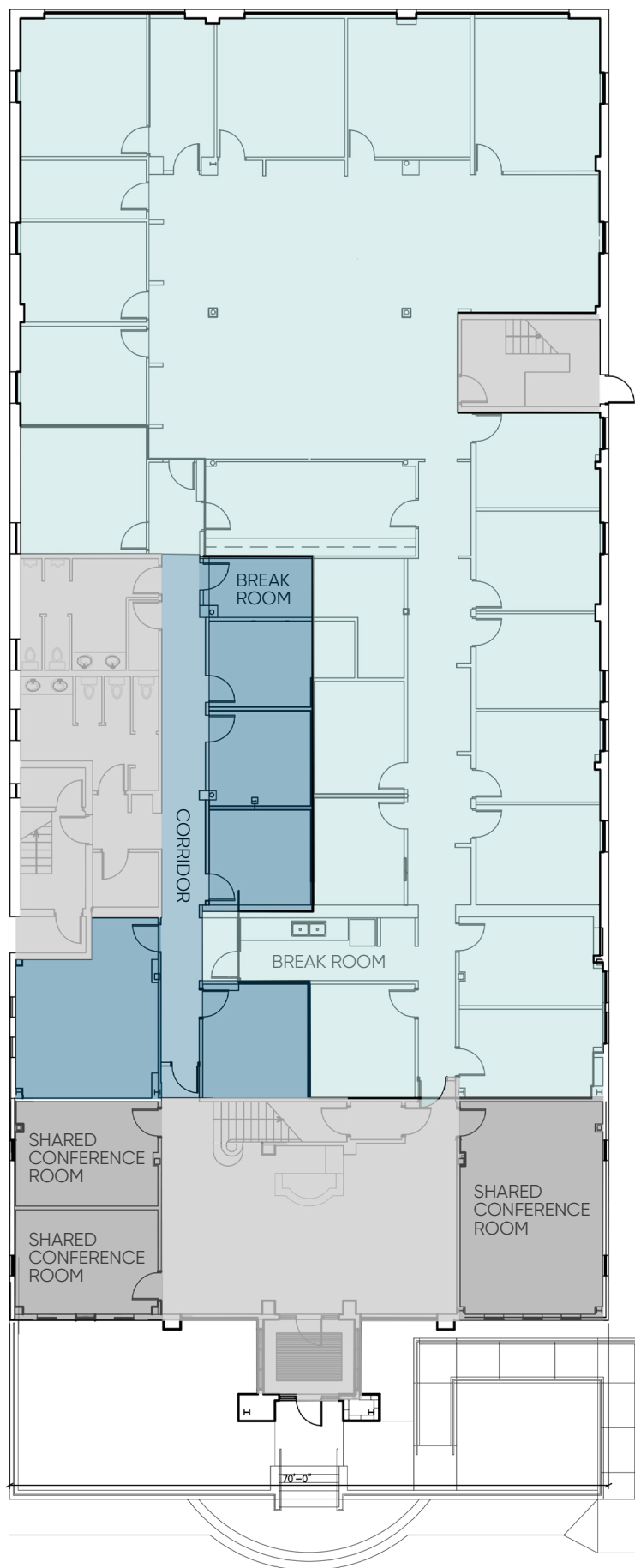
- Full, first floor leasing opportunity within a boutique two story building along East Morehead Street
- Dedicated surface parking at 3.0 per 1,000SF with two access points and rear entrance into historic Dilworth and South End
- Situated in the heart of Charlotte's Midtown market, adjacent to Uptown, the Atrium Pearl District Campus and access to I-277/I-77
- Walkable to Carson Light Rail and numerous Midtown and South End restaurants and amenities



610 EAST MOREHEAD

SUITE 101
CHARLOTTE, NC 28202

SUITE 101: ±1,710 RSF



BUILDING LOBBY



REAR ENTRANCE

The corridor in Suite 101 is an egress corridor for Suite 100.

SURROUNDING AMENITIES

610 EAST MOREHEAD

SUITE 101
CHARLOTTE, NC 28202



Beacon Partners is a commercial real estate firm specialising in the development, acquisition, and operation of industrial, office and mixed-use properties. Beacon leases, owns or manages more than 17.5+ million square feet of space throughout the Carolinas.