

610 E MOREHEAD STREET

610 E MOREHEAD ST | SUITE 200 | CHARLOTTE, NC 28202



AVAILABLE FOR LEASE

2,500 SF

OFFICE SPACE IN MIDTOWN

- A two-story boutique office building with signage opportunities
- Creative, open office space with access to shared conference rooms
- Free surface parking
- Numerous amenities located within immediate area, including restaurants, retail and the Dowd YMCA
- Located in the heart of Midtown Charlotte
- Less than 5 minutes from I-77, I-277 and Uptown Charlotte
- Beacon Partners owns, leases and manages over 1 million in the Midtown and South End areas



FOR MORE INFORMATION, CONTACT:

KRISTY VENNING

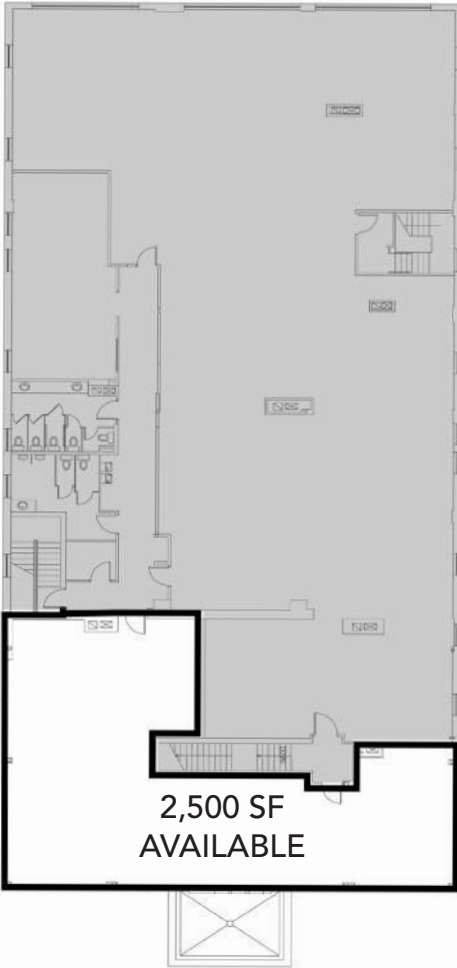
704.926.1409 (d) kristy@beacondevelopment.com

500 East Morehead Street | Suite 200 | Charlotte, NC 28202

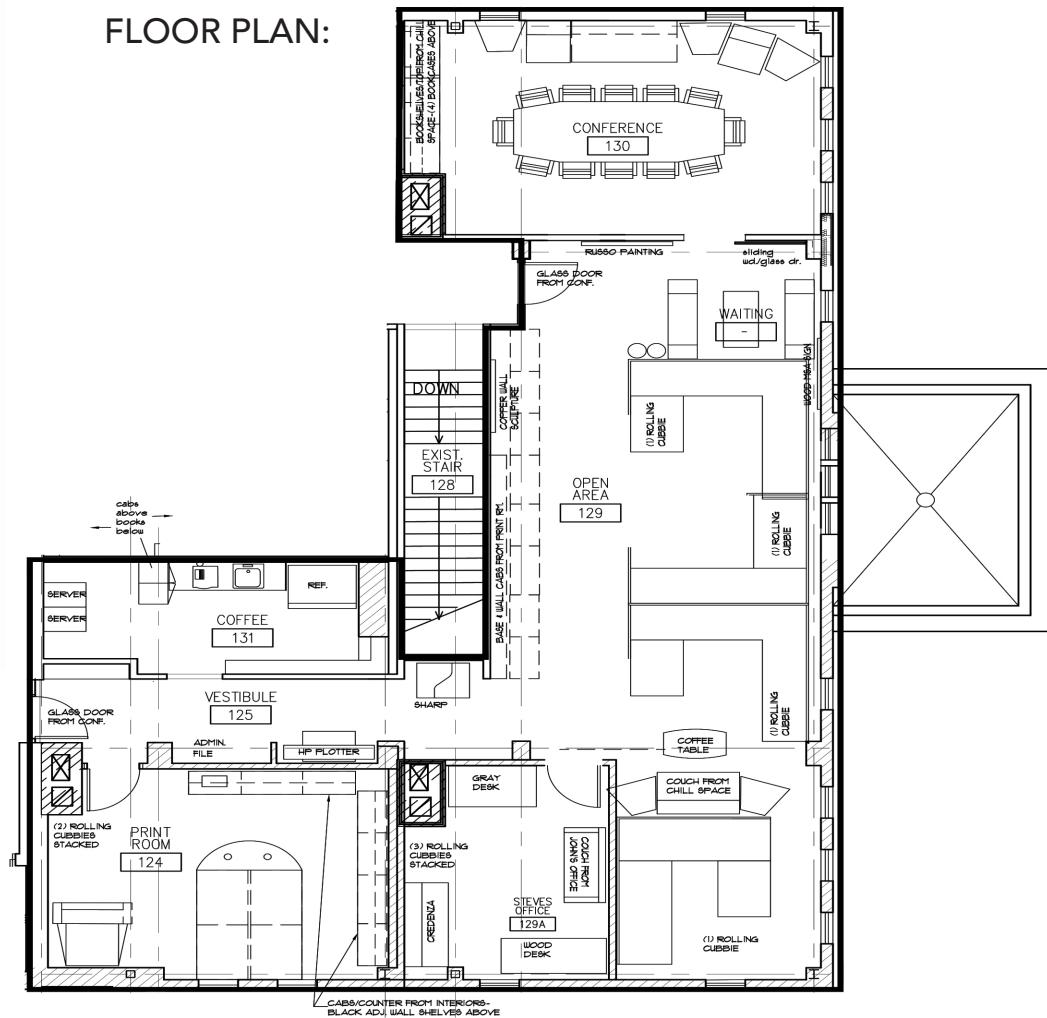
www.beacondevelopment.com



FLOOR PLATE:



FLOOR PLAN:



FOR MORE INFORMATION, CONTACT:

KRISTY VENNING

704.926.1409 (d) kristy@beacondevelopment.com

500 East Morehead Street | Suite 200 | Charlotte, NC 28202

www.beacondevelopment.com

